

BioUpdate

Department of Biology, Middle Tennessee State University

Fall 2014

SPECIAL ISSUE: Moving into the new Science Building!

Spring 2012

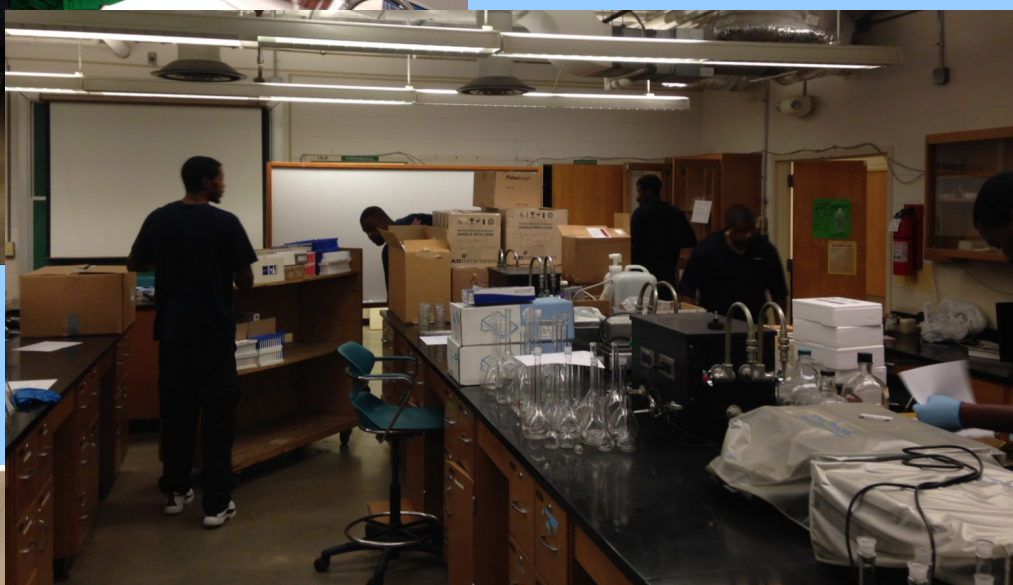


Summer 2014





The move began the first week of July and continued into the first week of the fall semester in late August.



Crews from Graebel Movers carefully packed up teaching and research labs and moved them from Davis Science Building and Wiser-Patten Science Hall to the new Science Building. They emptied drawers, shelves, and cabinets, meticulously wrapping each item. Items were packed into plastic bins (shown at left) or onto carts for easy moving.

Packing a lab took anywhere from a couple hours to half a day. Bins and carts were stored in the hallway or in the lab.



Carts were wrapped in plastic for safety.

A detailed schedule accommodated ongoing courses being taught in DSB and WPS. Summer classes were not affected by the packing or the move.





Everything
got safely
packed and
moved.





Carts and bins were loaded on trucks and moved to the new building.





All that was left in
DSB and WPS were
empty rooms!





During the move the building had security to limit access. Faculty, staff, and graduate students had to swipe their MTSU IDs and sign in and out each day they were in the building.

Although the move was a lot of work and a little stressful, faculty and students stayed upbeat!



Some folks even found time to play pranks on the movers!





The new Biology Department office.





While completing their regular duties, staff members set up their new offices.





Faculty, staff, graduate students, undergraduate students, and even the department chair spent many hours unpacking and setting up laboratories.





Most microscopes were moved to the new labs.

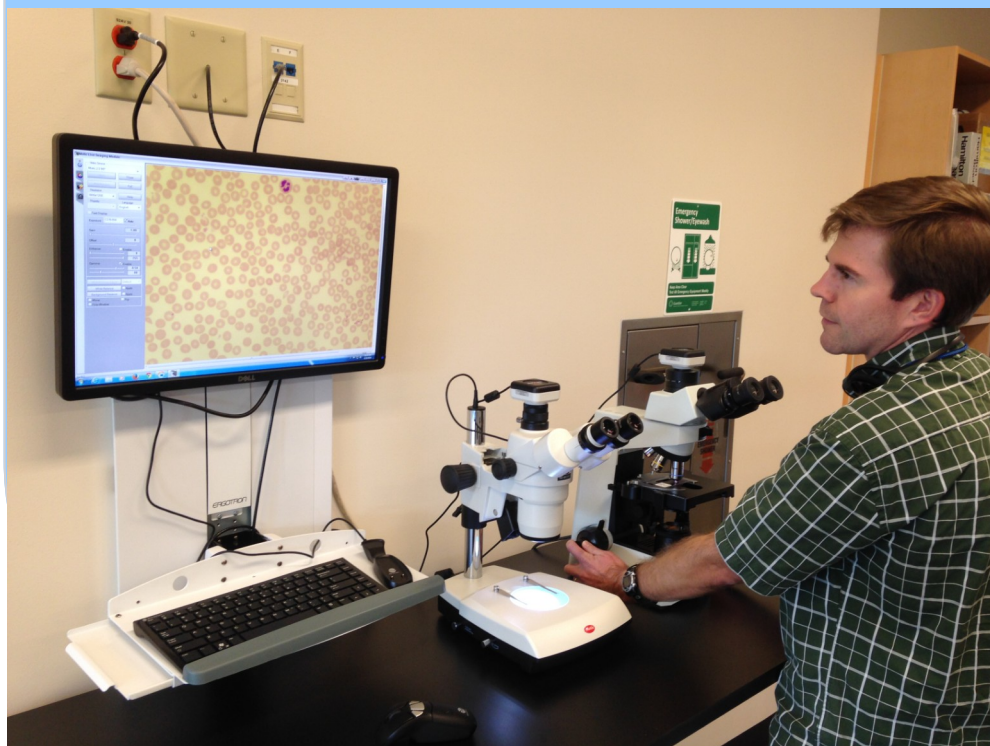


Many new microscopes were purchased for new teaching laboratories.





Dave Powell had the arduous task of setting up seven new freshman labs and four prep rooms.



Dave checks out new technology that's in every freshman laboratory.



New facilities include a fully automated greenhouse. The department has not had its own greenhouse in over 25 years!





The new building has rooms for equipment such as growth chambers and autoclaves.

Walk-in environmental rooms.



Graduate Teaching Assistant cubicles.



The new MTSU Interdisciplinary Microanalysis and Imaging Center (MIMIC).



Joyce Miller, director of MIMIC, unpacks and sets up the new center.

The new building has all new furniture. No furniture was moved from the old buildings.



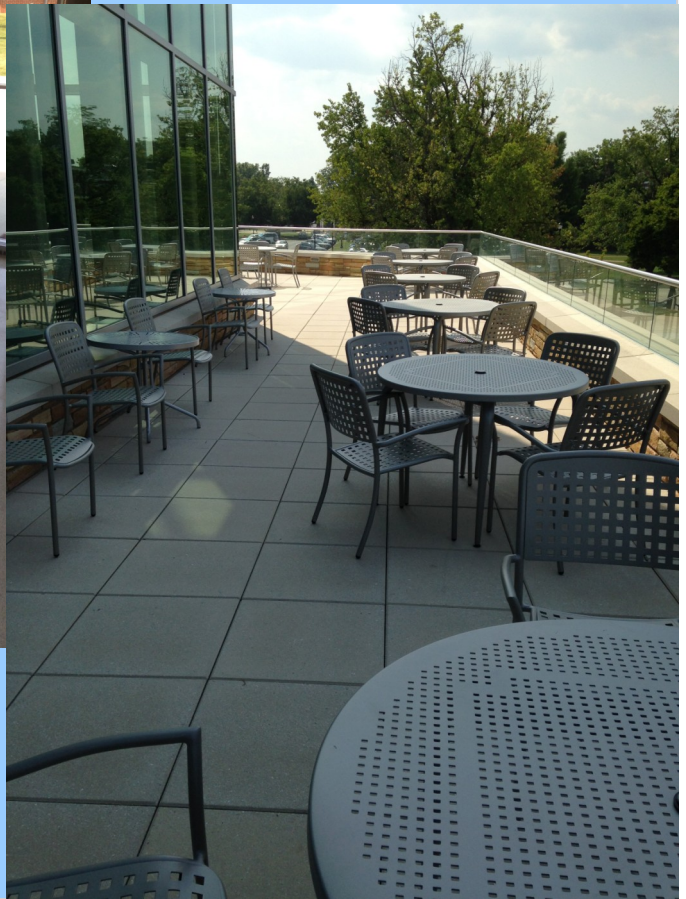


New furniture in faculty offices.





By late August, the new building was ready for students.



Offices in the New Science Building

Biology Department

2044

Altman, Eliot	2067	Leblond, Jeff	2051
Bailey, Frank	2026	Manning, Brian	2127
Benz, George	1055	Martin, Richard	1159
Bergemann, Sarah	1081	Massengill, Amy	2129
Boyd, Lynn	2044A	McClelland, Erin	2121
Brower, Andy	1053	McGhee, Charles	2141
Butler, William	2135	McNeil, Leigh	MGB 101
Cobb, Vince	1083	Miller, Brian	1071
DuBois, John	2022	Morris, Ashley	1067
Edwards, Steve	1159	Mullen, Dennis	1085
Elrod-Erickson, Matt	2028	Murphy, George	2147
Ervin, Gore	2151	Nelson, David	2016
Farone, Anthony	2083	Newsome, Anthony	2069
Farone, Mary	2085	Otter, Ryan	2024
Gao, Iris	2065	Prabu, Moses	1157
Gardner, Grant	2149	Robertson, Brian	2053
Hemmerly, Thomas	1159	Rutledge, Michael	1149
Herlihy, Chris	1059	Sadler, Kim	1161
Howard, Steve	1051	Salem, Moh	2055
Jessen, Jason	2014	Seipelt-Thiemann, Becky	2012
Jetton, Amy	2153	Smith-Walters, Cindi	1163
Johnson, Sandra	2123	Stewart, Bill	2010
Kelly, Padgett	1069	Walck, Jeffrey	1057
Klukowski, Matt	1151	Wright, Steve	2081
Lanfear, Alicja	2125	Zamora, John	2155

BioUpdate

Lynn Boyd, department chair (Lynn.Boyd@mtsu.edu)

John D. DuBois, editor(John.Dubois@mtsu.edu)

Produced by MTSU

Department of Biology

0914-1085 / Middle Tennessee State University is an AA/EEO employer and does not discriminate on the basis of race, color, national origin, sex, disability, or age in its programs and activities. The following person has been designated to handle inquiries regarding the nondiscrimination policies: Executive Director of Institutional Equity and Compliance, 1301 E. Main Street, CAB 220, Murfreesboro, TN 37132, 615-898-2185. The MTSU Title IX coordinator, designated to monitor and oversee Title IX complaints, may be contacted at Sam Ingram Building, 2269 Middle Tennessee Blvd., Murfreesboro, TN 37132, 615-898-5133, or via this webpage: www.mtsu.edu/titleix/.