

# Using State Farm Lecture Hall



Business Aerospace Building Room S102

# Equipment Rack

DVD Player

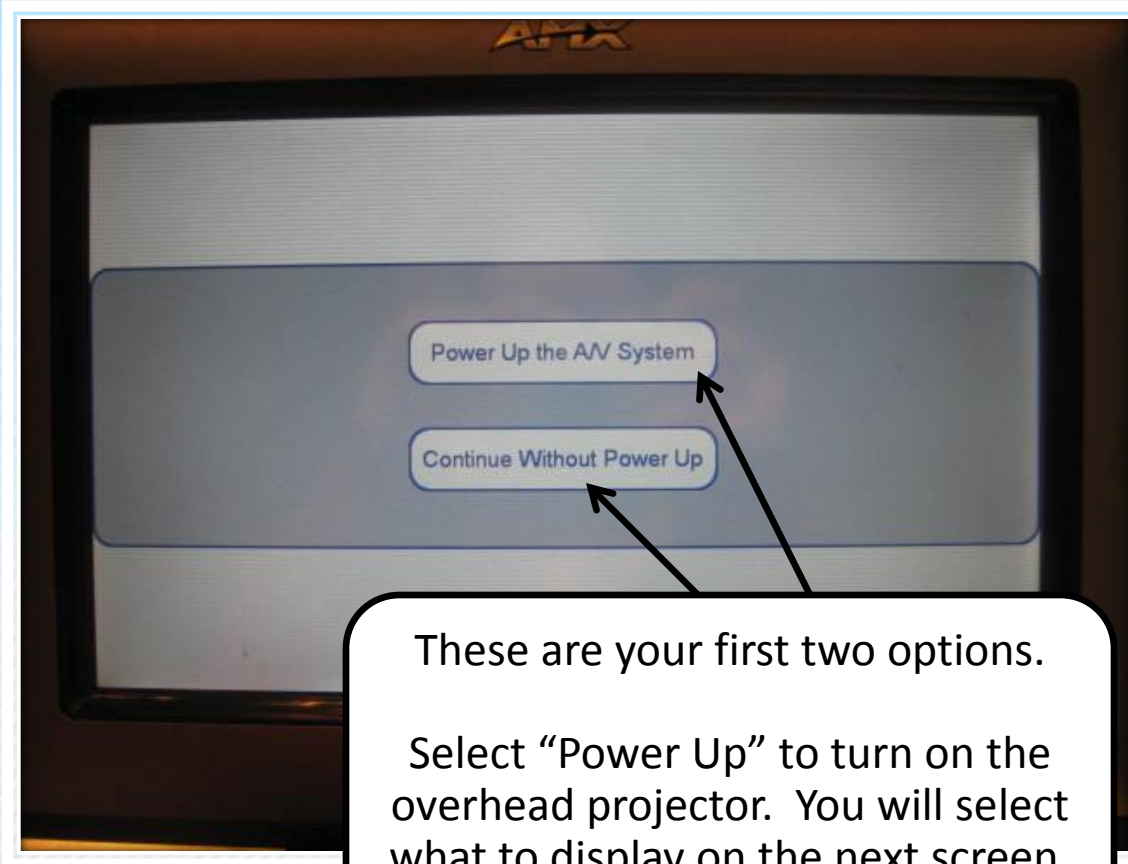
VCR



# AMX Touch Screen Master Control



Touch the screen to begin session. It will usually be black before you touch it.



These are your first two options.

Select "Power Up" to turn on the overhead projector. You will select what to display on the next screen.

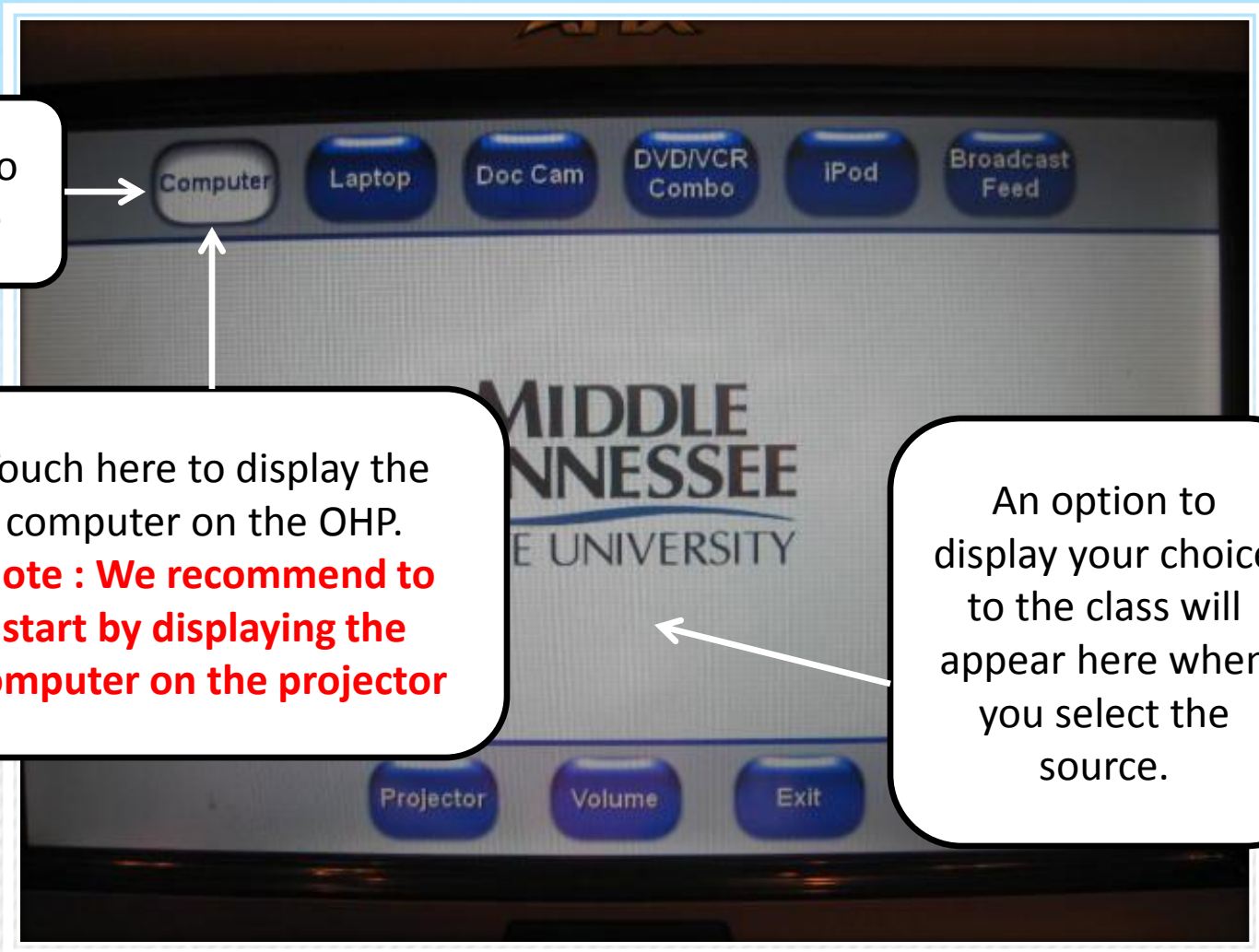


# Displaying the Computer Screen

Choose Video Source here

Touch here to display the computer on the OHP.  
**Note : We recommend to start by displaying the computer on the projector**

An option to display your choice to the class will appear here when you select the source.



# Using Remote Mouse

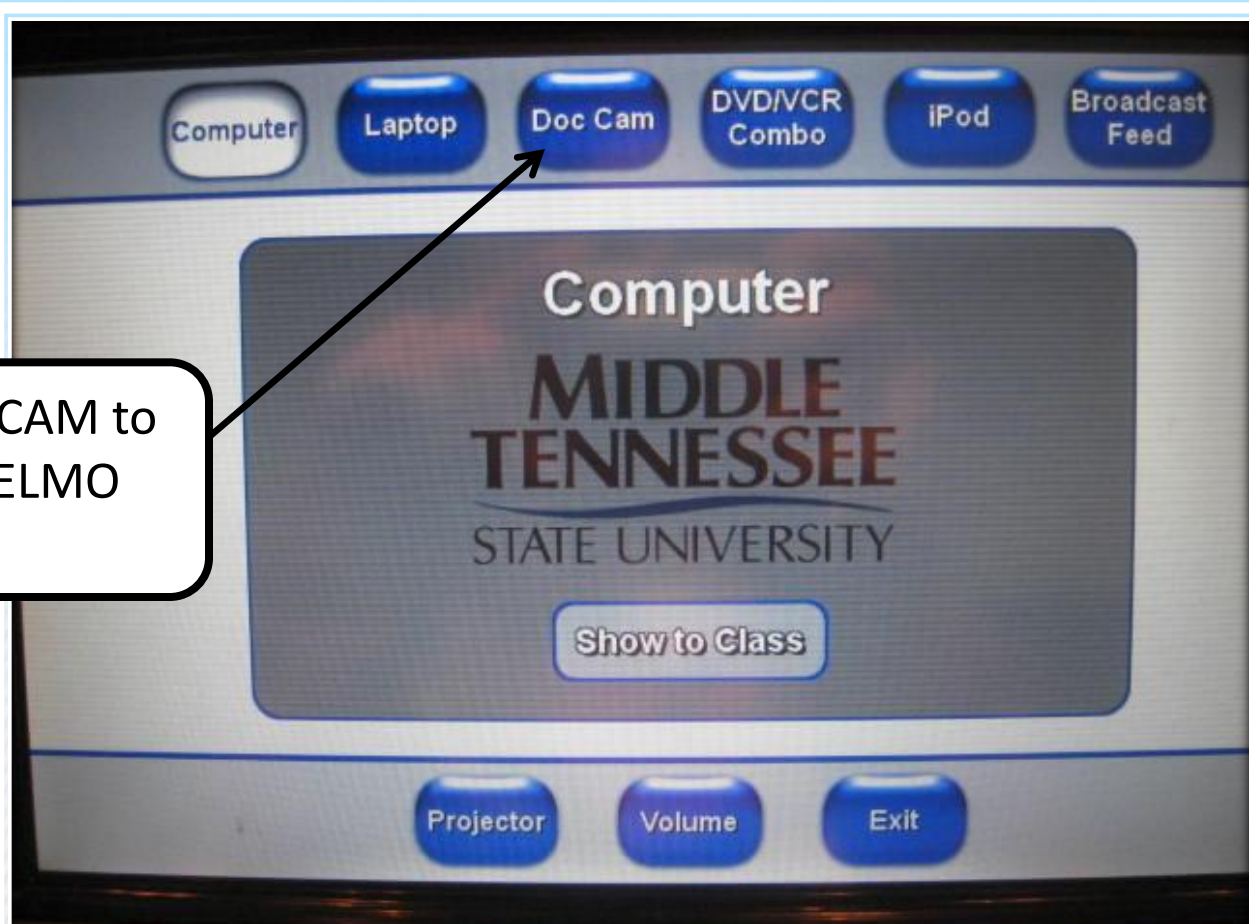
Press and hold button beneath the mouse for pointer mode operation.

Wireless mouse works like a regular mouse.

Please put mouse back on the charger when finished.



# Displaying the Document Camera



Select DOC CAM to display the ELMO image

After the Source option is selected, the projector will automatically display the document on Document Camera

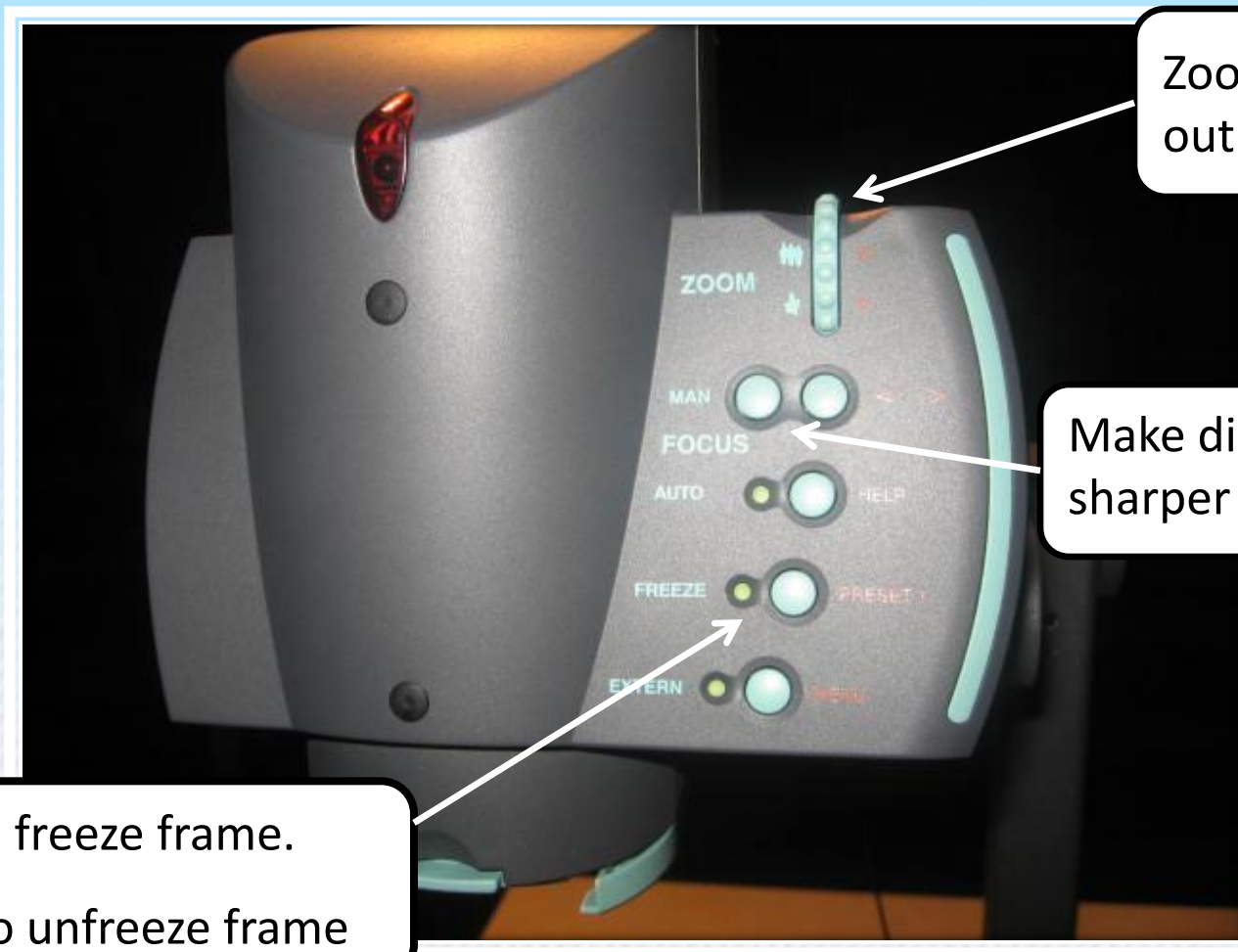


# Document Camera (ELMO)

Place document  
here.



# ELMO Controls



Zoom in and out

Make display sharper or softer.

Hit once to freeze frame.  
Hit twice to unfreeze frame

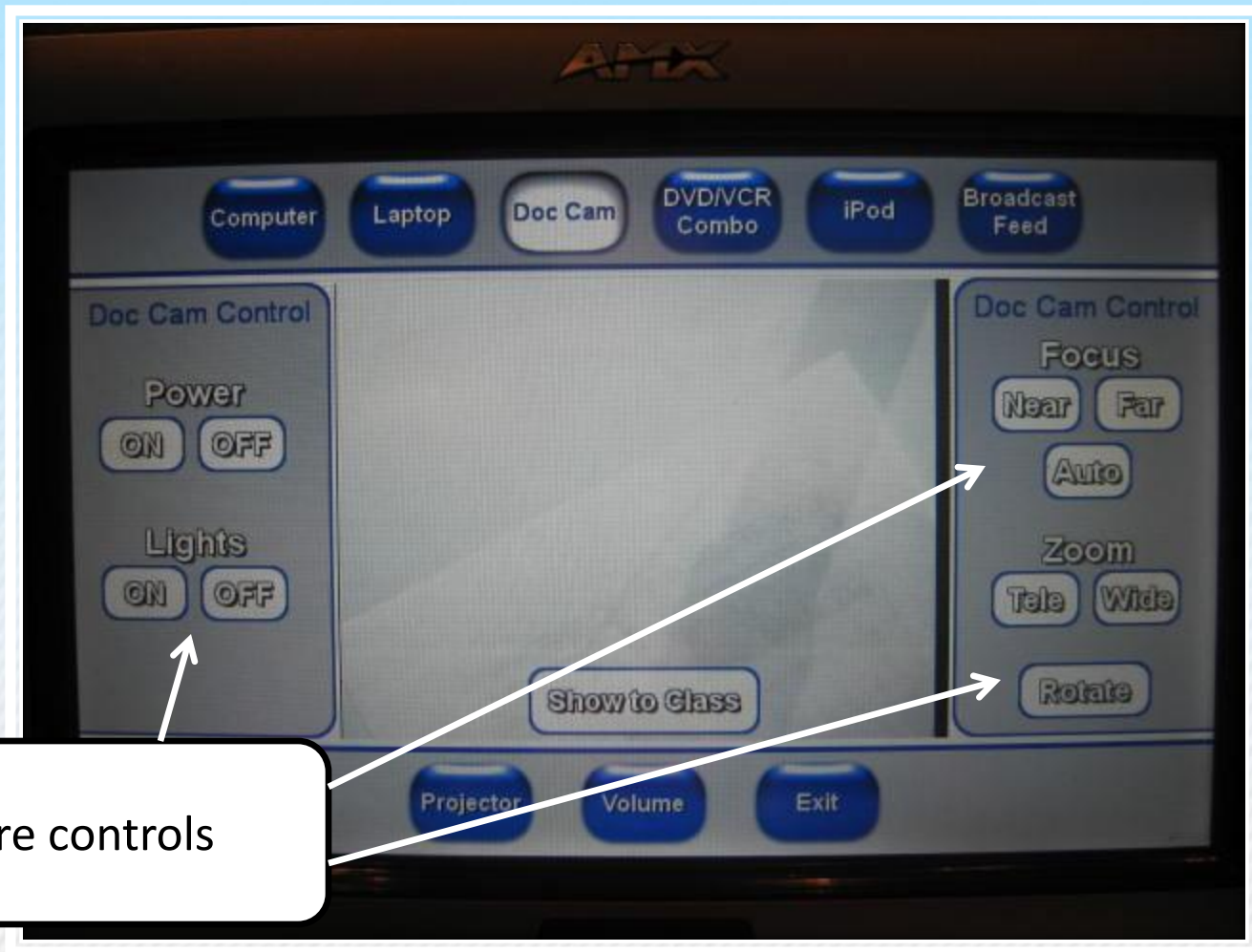


# ELMO Controls (Cont.)



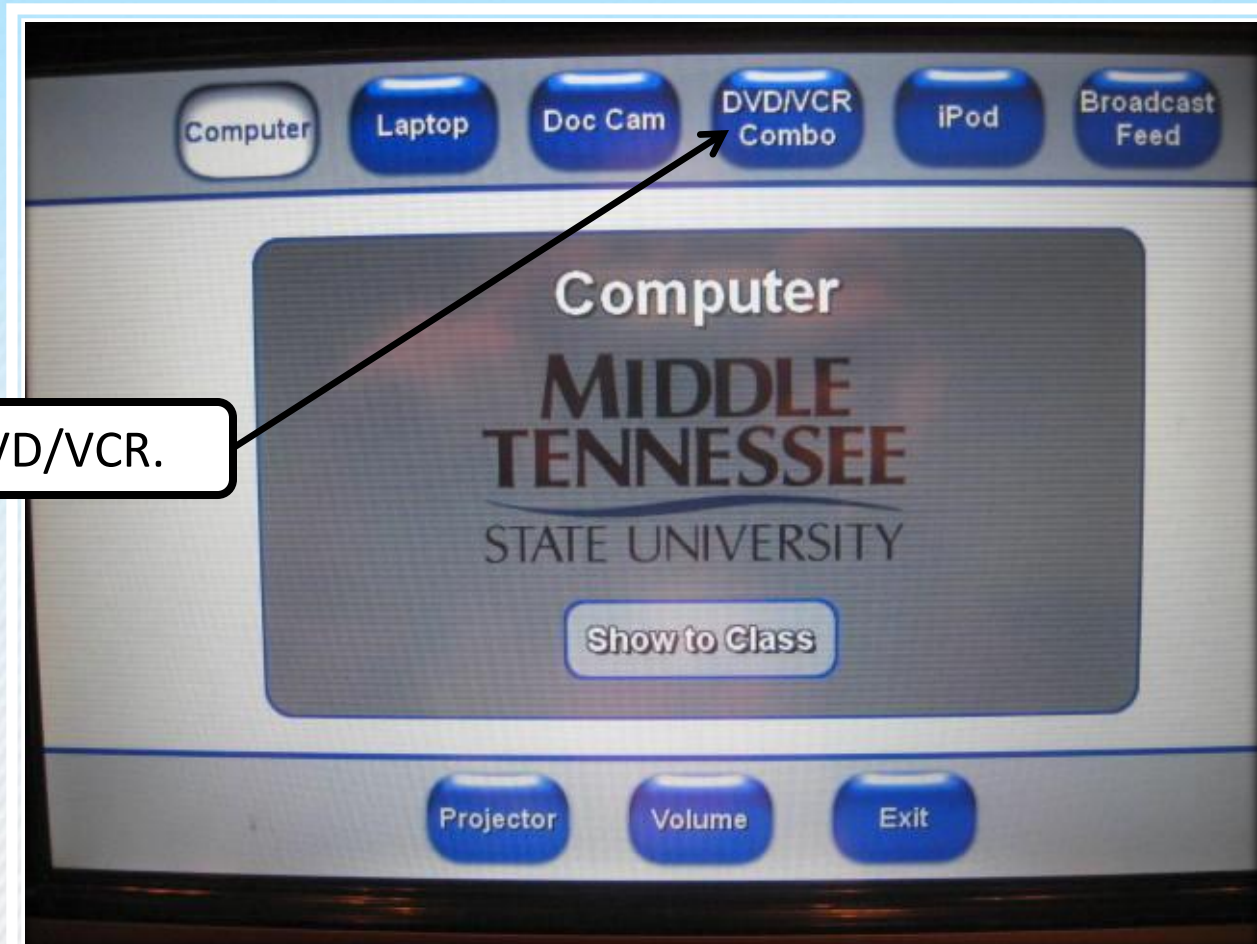
Press here to turn on if ELMO does not do so automatically.

# ELMO Controls (Cont.)



More controls

# Displaying a DVD Movie



Select DVD/VCR.

Show the DVD/VCR movie as shown on the AMX



# VCR Controls



Allows you to select options on DVD.

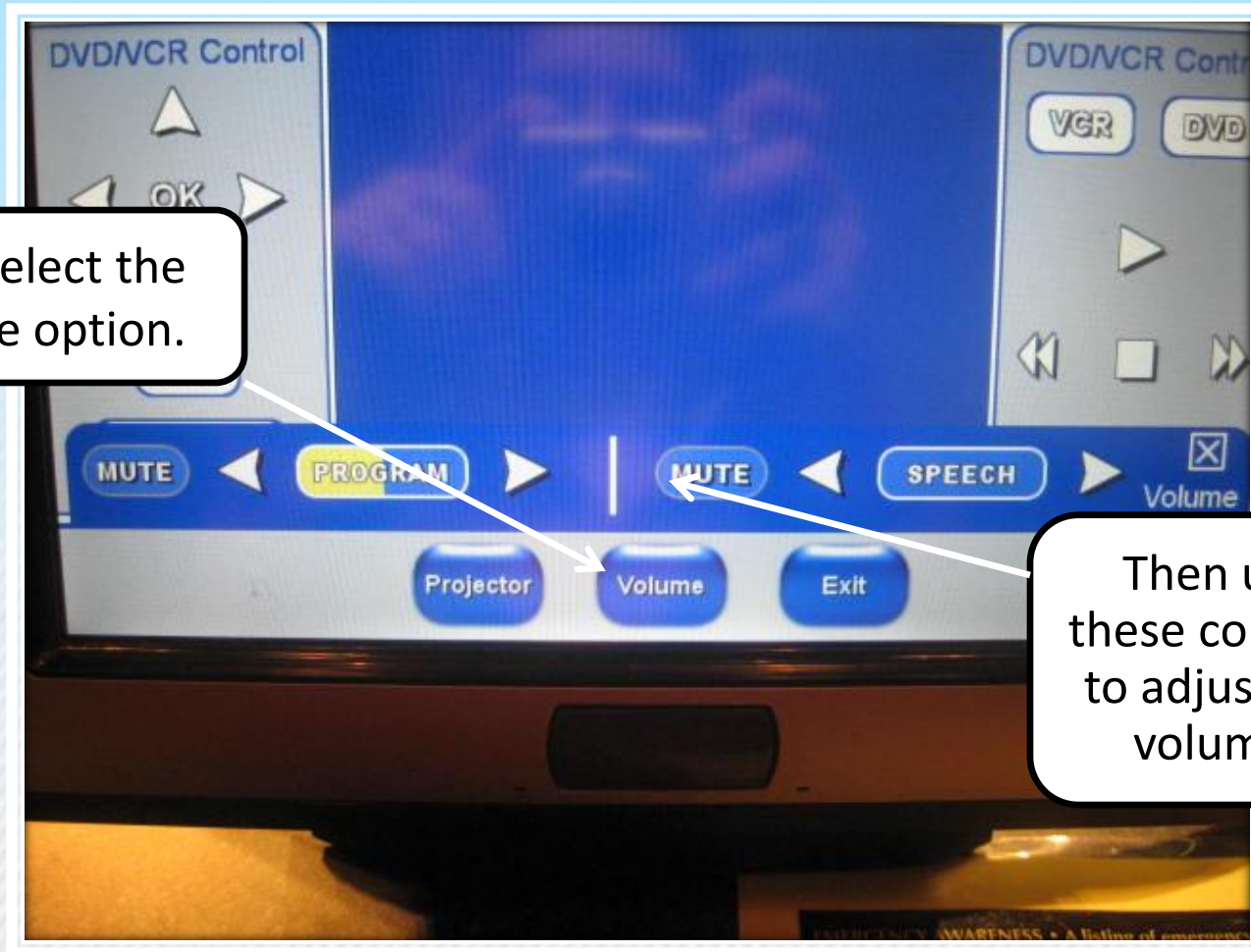
Press here to show movie on the projector

Make sure you have your DVD or tape ready in the player first.

Press Play to play the movie

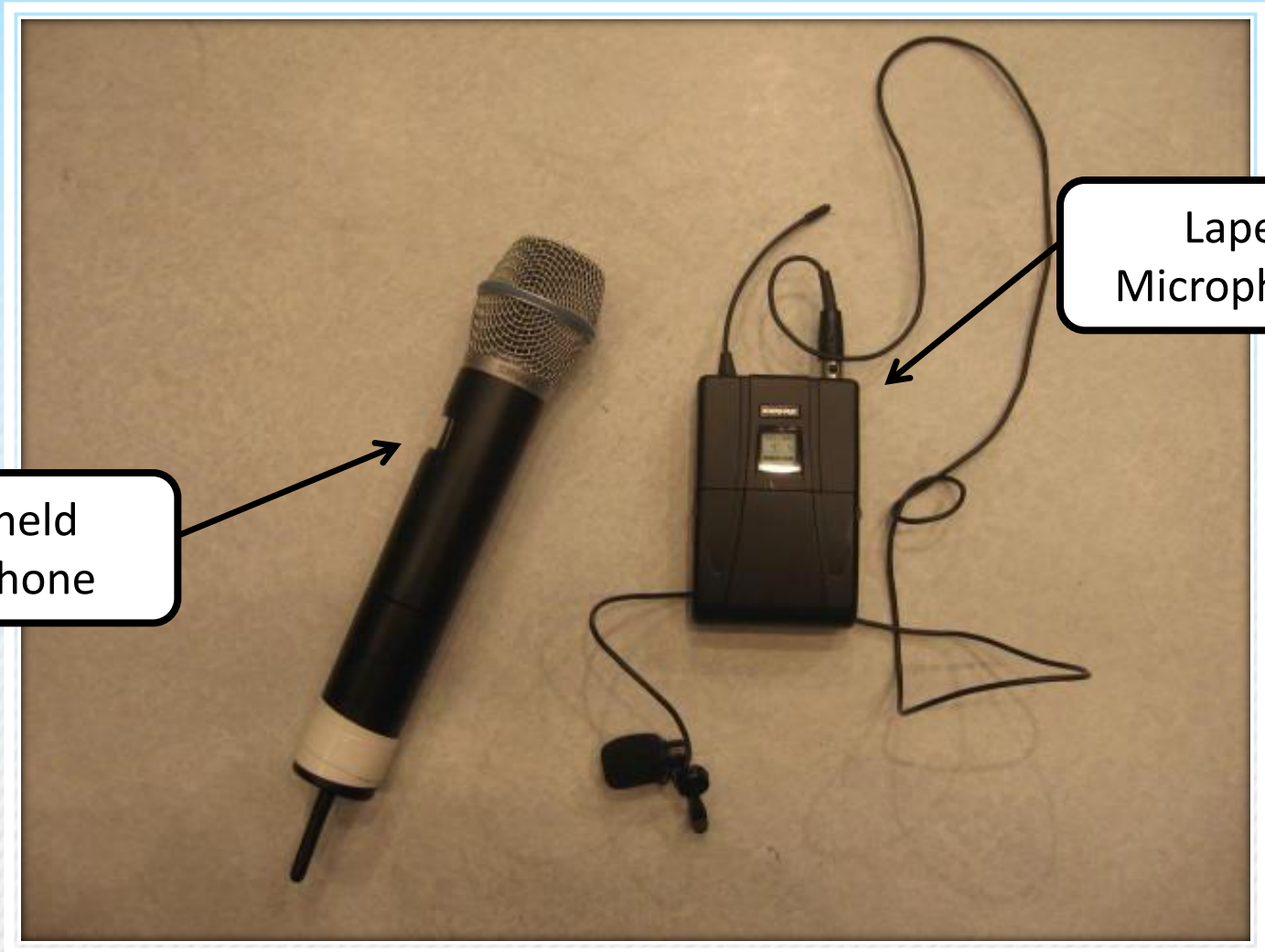
# DVD/VCR Volume Controls

First, select the volume option.



Then use these controls to adjust the volume.

# Microphones

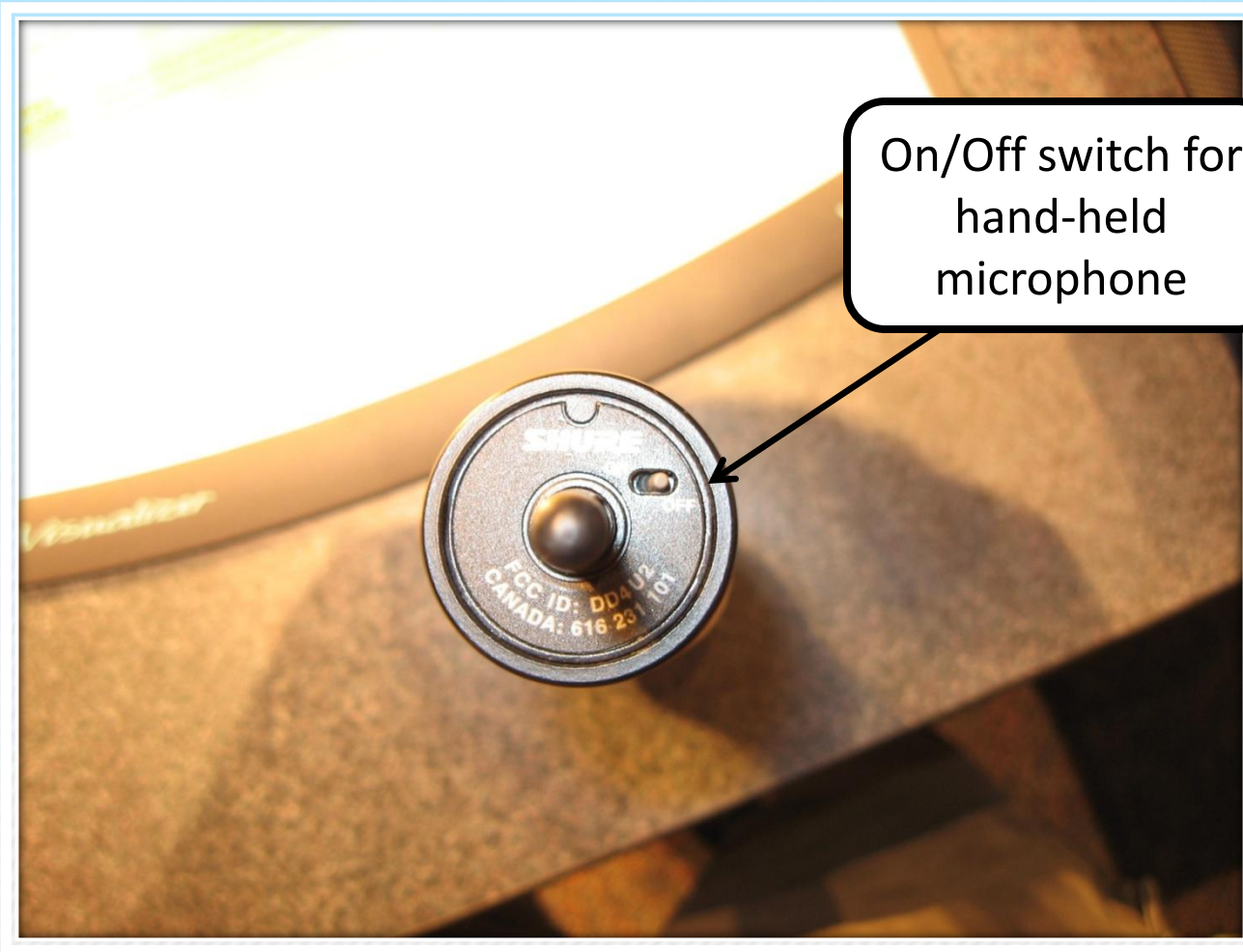


Hand-held  
Microphone

Lapel  
Microphone



# Microphones (Cont.)



On/Off switch for  
hand-held  
microphone

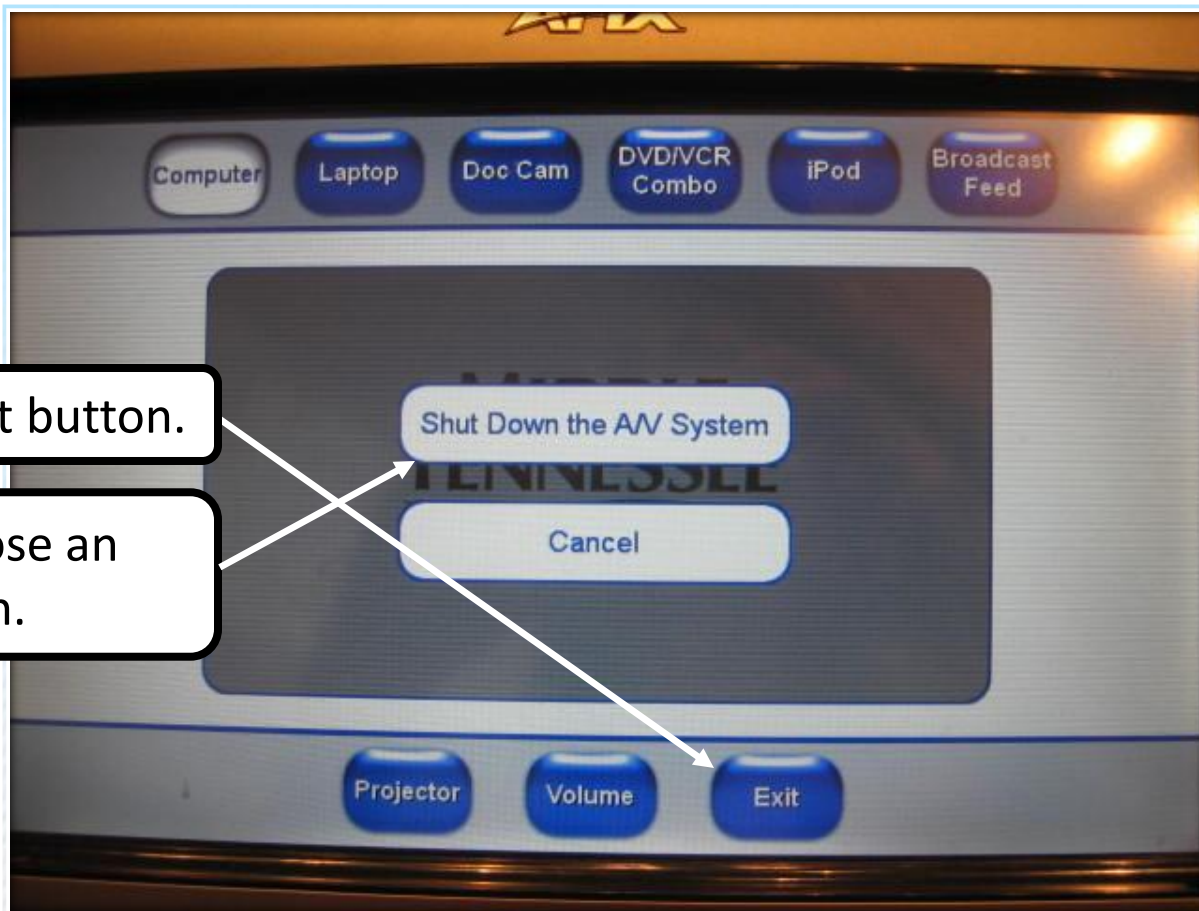
# Microphone Volume



Adjust  
microphone  
volume here.

Select volume.

# Turning Off Equipment



Touch the exit button.

Then choose an option.

**The projector will turn off automatically.**

Wait 4 minutes to turn it on again (OHP must cool off first!)



# Congratulations!

- You Are Now Ready to Use Multimedia Presentations
- Please Turn Off All Equipment When Finished

