

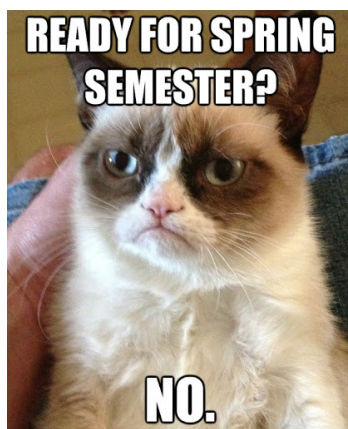
# January/February 2021

## Newsletter



### January Dates:

1/25 Classes Begin



### February Dates:

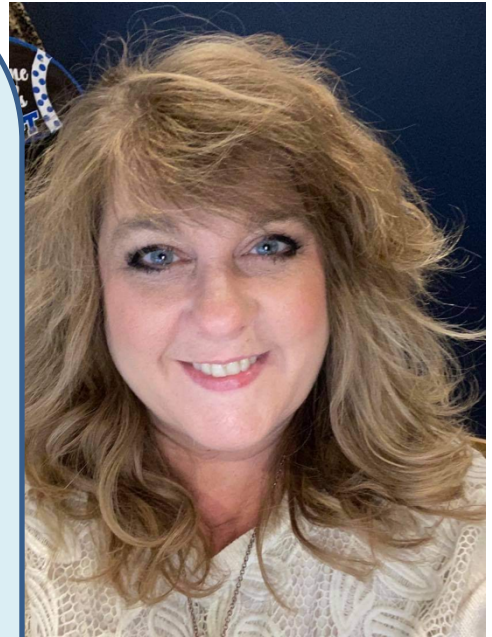
- 2/3 Lambda Pi Eta Meeting
- 2/9 Comm Studies Meeting
- 2/15 TCA Submission Deadline
- 2/17 Lambda Pi Eta Grad School Info Session
- 2/18 Dr E. Stephens WGST Presentation
- 3/14 Speech Contest Applications Due

# Meet Suzi Richardson

Suzi, an Illinois native, graduated with a B.A. in History/Secondary Education from Olivet Nazarene University in Kankakee, Illinois. For twenty years she ran her own roofing business and was a professional recording studio session background singer. She has recorded projects in some of Nashville's most historic and iconic studios and performed live with some of Christian and Country music's biggest artists including Charlie Daniels, Lee Greenwood, Michael W. Smith, and Hilary Scott from Lady A.

Suzi began working at MTSU in Undergraduate Admissions in February of 2017 where she daily greeted and welcomed families to MTSU, helping them through the college admissions process. In November of 2020, Suzi accepted the position of Executive Aide for Communication Studies where she works primarily with students and faculty. Suzi says, "Communication Studies is a natural fit for me because of my years of experience performing on stage, business ownership, and in Undergraduate Admissions. I have learned that strong communication skills are highly prized in the professional world. It is imperative for professional success."

Suzi and her husband have four children, with the youngest still in high school. They keep her busy, but she still finds time to passionately pursue her love for performing in Community Theatre musicals and watching professional hockey. She loves cheering on the Nashville



*Suzi Richardson  
Communication Studies  
Executive Aide*



Come check out the windows at  
Jones Hall

@mtcommstudies

# LAMBDA PI ETA

## ABOUT

Lambda Pi Eta (LPH) is the National Communication Association's (NCA) official honor society at four-year universities in the nation.

## REQUIREMENTS

- Completed 60 semester credit-hours
- Have a minimum overall cumulative GPA of 3.0
- Completed 12 semester credit-hours in Communication Studies
- Have a minimum GPA of 3.25 for all Communication Studies courses
- Currently enrolled as a student in good standing

More information is available at

<https://www.mtsu.edu/communication/LPH.php>.

## Contacts

Meredith Craig  
(Student President)  
[mec6p@mtmail.mtsu.edu](mailto:mec6p@mtmail.mtsu.edu)

Dr. Dee Priddis  
(Faculty Advisor)  
[dee.priddis@mtsu.edu](mailto:dee.priddis@mtsu.edu)

*If you don't have the credit requirements, you can join as a charter member for \$5/year.*

## COMMUNICATION STUDIES

Communication Studies Club is a student-led networking, professional development, and service club. We are open to all students, and there are no major or GPA requirements to join. Some of our activities have included:

- Bringing in outside speakers to educate us on career opportunities in the field of communication and discuss job readiness
- Coordinating with the Career Development Center at MTSU to offer professional service such as resume and LinkedIn workshops, headshots, and mock interviews
- Participating in service activities as a group in Nashville area

We aim to provide a space where Communication students can pursue their interests and take on leadership roles to add to their resumes, so we're always open to suggestions from new members on meeting ideas for the semester. Use the link below for our survey:

<https://docs.google.com/forms/d/1f1MWp8teCiNIPG2o5Wyte8xl4BhEFbHttKfrrMFjCo/edit>



For more information: [https://www.mtsu.edu/communication/Communication\\_Studies\\_Club.php](https://www.mtsu.edu/communication/Communication_Studies_Club.php), or contact Gaby Jaimes (Student President) at [gji2r@mtmail.mtsu.edu](mailto:gji2r@mtmail.mtsu.edu).



# Speech & Debate Team

The Blue Raider Debate Team is housed out of the Department of Communication Studies. It is the oldest continual student organization on campus with a proud tradition of excellence. The team is open to ALL students in good academic standing. No prior experience is necessary. The team competes in debate, speech, and acting events. We start our travel season at Tennessee Tech at the end of September. For more information about the team please contact Dr. Patrick Richey for debate ([Patrick.richey@mtsu.edu](mailto:Patrick.richey@mtsu.edu)) or Natonya Listach ([natonya.listach@mtsu.edu](mailto:natonya.listach@mtsu.edu)) for speech & acting events.



Solomon Barber earned his portfolio during the tournament that took place the weekend of January 23, 2021 (twice!)

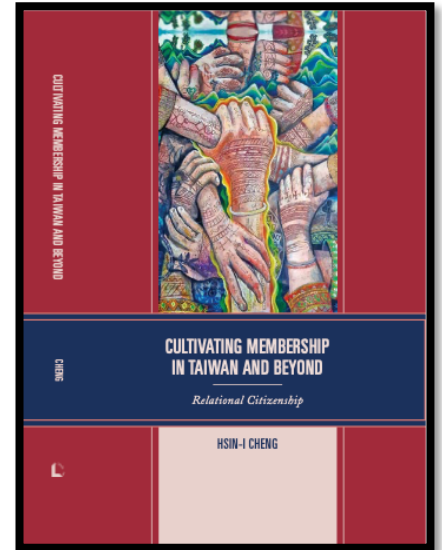
# ANNOUNCEMENTS

## Publications

**Book:** Cultivating Membership in Taiwan and Beyond: Relational Citizenship (2021, Lexington, an Imprint of Roman/Littlefield)

**Author:** Dr. Hsin-I Cheng

Citizenship is traditionally viewed as a legal status to be possessed. This book proposes the concept of relational citizenship to articulate the value-laden, interactive nature of belongingness. Hsin-I Cheng examines the role of relationality which produces and is a product of localized emotions. By focusing on Taiwan, a non-Western society with a tradition to adeptly attune to local experiences and those from various global influences, relational citizenship highlights the measures used to define and encourage interactions with newcomers. This book shows the multilayered communicative processes in which relations are gradually created, challenged, merged, disrupted, repaired, and solidified. Cheng further argues that this concept is not bound to nation-state geographic boundaries as relationality bleeds through national borders. Relational citizenship has the potential to move beyond the East vs. West epistemology to examine peoples' lived realities wherein the sense of belonging is discursively accomplished, viscerally experienced, and publicly performed.



**Journal Article :** Assessing Grief in Family Caregivers of Individuals With Alcohol Use Disorder or Substance Use Disorder using the Marwit-Meuser Caregiver Grief Inventory Short Form (MM-CGI-SF). Published 11/24/20 in Substance Abuse: Research and Treatment. <https://doi.org/10.1177/1178221820972711>

**Authors:** Drs. DeAnne Priddis and Mary Beth Asbury

This study assessed grief in caregivers of family members with alcohol use disorder (AUD) and substance use disorder (SUD) using the Marwit-Meuser Caregiver Grief Inventory Short Form (MM-CGI-SF). We used snowball sampling to recruit participants who had family members with AUD and SUD. The sample was comprised of 100 caregivers of family members with AUD and 75 caregivers of family members with SUD. The original MM-CFI-SF was modified by changing the wording to reflect those with AUD and SUD. The 18-item instrument consisted of 3 factors: personal sacrifice burden, sadness and longing, and worry and felt isolation. The professional care of caregivers with family members with AUD and SUD should be addressed by health professionals in the same manner as dementia caregivers. AUD and SUD caregivers may also downplay the distress, require social support, or have a common reaction to the stress and grief encountered. The correlations were moderate to strong and significant between each of the factors for both AUD and SUD caregiver scale.

# ANNOUNCEMENTS

## Presentations

**Dr. Elizabeth Stephens**, WGST Research Series Presentation: ““Identifying as a Bereaved Mother: Using the Communication Theory of Identity as a Framework”, on February 18<sup>th</sup> at 3pm (Zoom).



## Conference

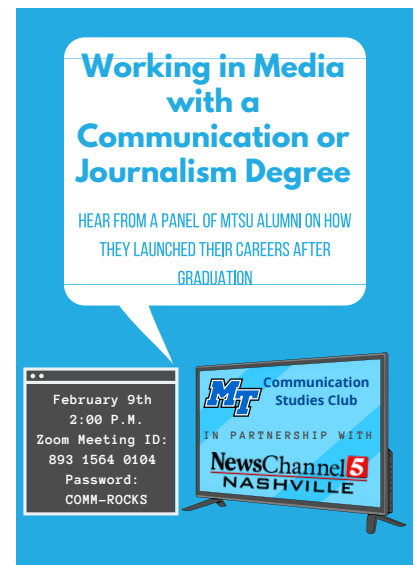
**Tennessee Communication Association (TCA)** submissions are due February 15<sup>th</sup>. The annual conference will be virtual this year March 26-27<sup>th</sup>.

**National Communication Association (NCA)** submissions are due March 31<sup>st</sup>. The annual conference will be held in Seattle, Washington November 18-21<sup>st</sup>.

## Student Organizations

### Communication Studies Club

**February 9<sup>th</sup> at 1:00 Working in Media with a Communication or Journalism Degree with New Channel 5 WTVF Nashville** will have a panel discussion of MTSU alumni on how they launched their careers after graduation. Zoom: [CSC Channel5 Zoom Meeting](#).



### Lambda Pi Eta

- 1. February 3, 2021, 11:00AM- NOON** Zoom Lambda Pi Eta First Spring 2021 Meeting
  - Zoom: [LPH Feb3 Meeting Zoom](#)
- 2. February 17, 2021, NOON--** Join us for a Graduate School Info Session
  - [LPH Grad School Meeting Zoom](#)
- 3. March 12, 2021, 3:30-4:30--** Virtual service project with refugee community
- 4. April 28, 2021, 10:00-11:00--** Coffee and Donuts with Your Professors



DEPARTMENT OF  
COMMUNICATION STUDIES

# ANNUAL COMM 2200 Speech Contest

Would you like a chance to win **\$250** by  
delivering a persuasive speech?

## DELIVER YOUR SPEECH AT OUR ANNUAL SPEECH CONTEST!

Submit your application and YouTube video link to  
[Speech.Contest@mtsu.edu](mailto:Speech.Contest@mtsu.edu)  
by Sunday, March 14th.

Contest will be held during MTSU's Scholars Week  
April 12-16.

Visit [www.mtsu.edu/speechcontest](http://www.mtsu.edu/speechcontest) for more information.



**Twitter:** @mtcommstudies

**Instagram:** @mtcommstudies

**Facebook Page:** MTSU Communication Studies

**Linkedin:** MTSU Department of Communication Studies

# Ready Reference Resource How Does a Student...

## Receive Writing Support?

The University Writing Center, in Walker Library 262, provides writing resources for students via remote learning including one-on-one, 45-minute appointments. Sign up at [mtsu.edu/writing-center](https://mtsu.edu/writing-center)

## Get Tutoring Assistance?

Find tutoring schedules for free remote tutoring in over 180 courses at [mtsu.edu/studentsuccess/tutoring.php](https://mtsu.edu/studentsuccess/tutoring.php)

## Schedule an Academic Advising Appointment?

Find the link on Pipeline MT's Registration and Student Records page at [pipeline.mtsu.edu](https://pipeline.mtsu.edu)

## Receive Food Assistance?

The Student Food Pantry provides access to free food, meal vouchers, and personal items with a student ID and is located with MT One Stop, SSAC second floor. Or make an online request at [mtsu.edu/foodpantry](https://mtsu.edu/foodpantry).

## Receive Medical Care?

The Health Services Building located at the Rec Center is open Monday-Friday during fall and spring semesters. Contact the office at **615-898-2988** and [mthealth@mtsu.edu](mailto:mthealth@mtsu.edu).

## Get Counseling Assistance?

Fully committed to the emotional health and wellness of our students, Counseling Services is housed in KUC 326-S. Schedule an appointment by calling **615-898-2670**

## Report Sexual Violence, Harassment, and/or Discrimination?

Visit the Office of Institutional Equity and Compliance in Cope 116 or at [mtsu.edu/iec](https://mtsu.edu/iec)

## Access Free Professional Clothing?

Raiders' Closet in KUC 327 has professional attire for both men and women (suits, jackets, slacks, shirts, ties, skirts, scarves). Email [kim.collins@mtsu.edu](mailto:kim.collins@mtsu.edu) or call **615-898-5467**

## Receive Life Needs Support?

The June Anderson Center, located in Student Union 330, offers housing/utility assistance, legal clinics, child care services, food vouchers, and scholarships. [mtsu.edu/jac](https://mtsu.edu/jac)



Office of Student Success

MIDDLE TENNESSEE STATE UNIVERSITY

## Learn about Internships and Employers?

The Career Development Center's services include career advising appointments, professional document review, virtual interview practice, and job search databases. Contact them at **615-898-2500** and [career@mtsu.edu](mailto:career@mtsu.edu).

## Apply for an Emergency Grant?

The MTSU Emergency Micro-Grant Program helps students in good standing with short-term financial emergencies to enable them to cope with unexpected hardships and remain in school. Apply on your academic college's home page.

## Contact Campus Police?

Reach the University Police 24-7 by calling **615-898-2424** on a cell phone or campus phone or **911** on a campus phone only

## Qualify for an Accommodation?

Visit the Disability and Access Center in KUC 107, call **615-898-2783**, or email [dacemail@mtsu.edu](mailto:dacemail@mtsu.edu)

## Access Training Videos Online?

MTSU students have access to the online training video library, LinkedIn Learning, which has over 3,000 training videos. [mtsu.edu/itd/lil.php](https://mtsu.edu/itd/lil.php)

## Report Misconduct by a Student?

Submit incident to the Office of Student Conduct, located in KUC 208, through the online form at [mtsu.edu/student-conduct](https://mtsu.edu/student-conduct)

## Succeed as a First-Generation Student?

Student Support Services, housed in KUC 308, works especially with first-generation and Pell grant-eligible students to ensure they navigate college successfully and graduate. One-on-one help with tutoring, advising, mentoring, and major selection are a few of the services provided. [mtsu.edu/ssupport](https://mtsu.edu/ssupport)

## Learn More about Veterans' Student Benefits?

The Charlie and Hazel Daniels Veterans and Military Family Center, in KUC 124/316, provides transition services for veterans and their families after returning to civilian life. Contact the center staff through [mtsu.edu/military](https://mtsu.edu/military)

MIDDLE  
TENNESSEE  
STATE UNIVERSITY.

I AM *true*  
**BLUE**

0720-9104 / Middle Tennessee State University does not discriminate on the basis of race, color, national origin, sex, or disability. See our full policy at [mtsu.edu/iec](https://mtsu.edu/iec).