

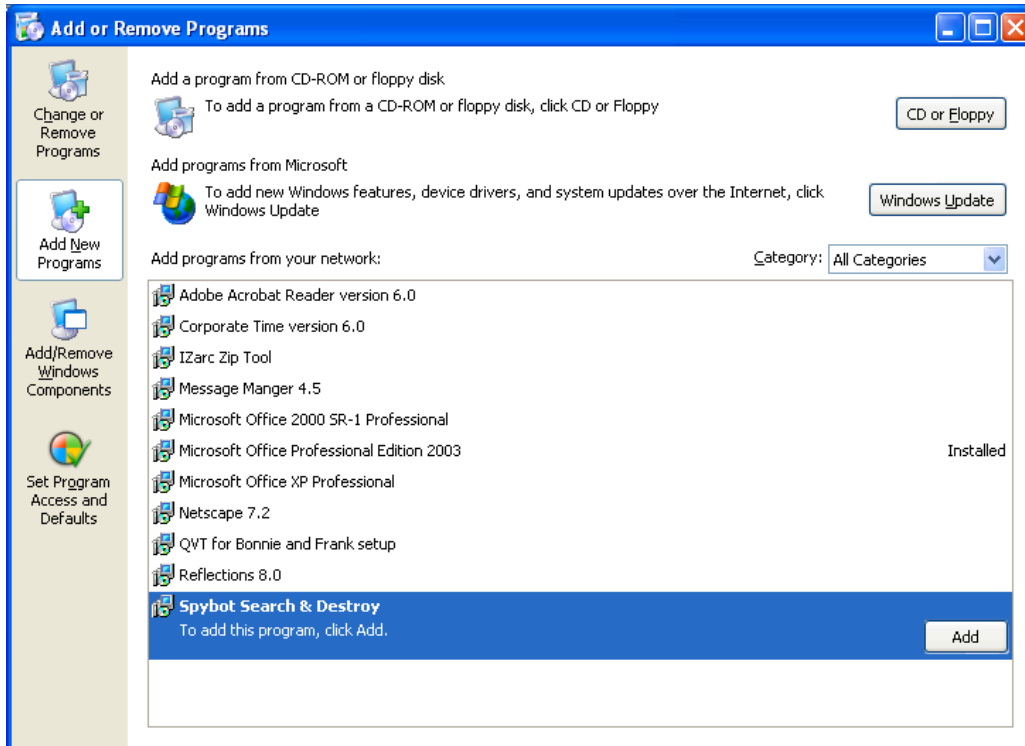
# Instructions for installing Spybot Search & Destroy version 1.3

The following instructions are for computers that are part of MTSU's FSA domain.

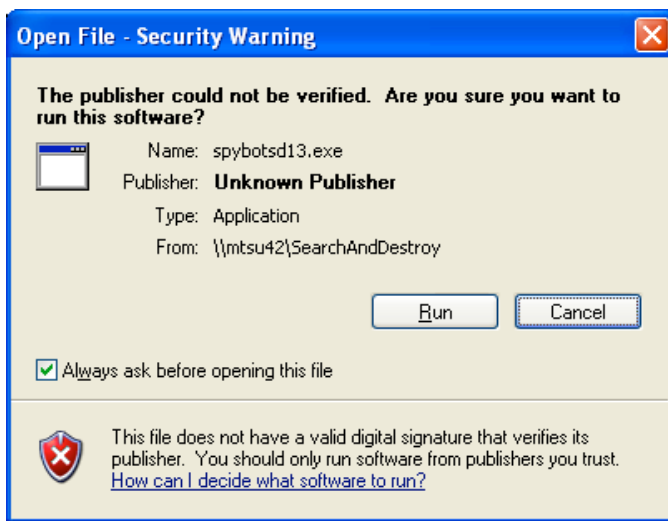
From Control Panel, double-click on Add/Remove Programs.

From the Add/Remove Programs screen, look at the left side of the screen and click on Add New Programs.

From the list of programs, select Spybot Search & Destroy and click on the Add button.

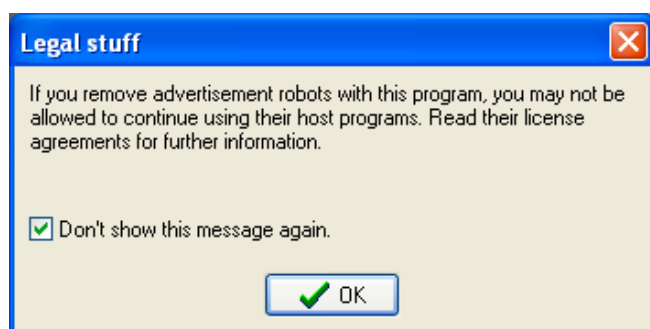


If you receive a Security Warning, select Run.



During the setup process, accept all of the default settings.

When the program starts, it will pop up a little “Legal stuff” screen. Click the “Don’t show me this again” box and hit OK.



When Search & Destroy starts for the first time, it guides you through a wizard. You will not see this wizard after the initial launch of the program.

The first screen allows you to backup your Registry. As the screen states, this is not necessary, but if you want to do so you can. If not, hit the Next button at the bottom.

The next option is to search for updates. You should choose this option. Click the “Search for updates” button.



If updates are found, you should choose to install the updates. After you have downloaded the updates, hit the Next button.

The next screen immunizes your computer. This is the important option. Immunizing your computer will block known spyware and adware from installing on your computer in the future.

Click on the “Immunize this system” button. You will then see the message that immunization has finished. You can now hit the Next button.



The last screen in the wizard gives you a couple of options. If you need to read the tutorial, you can do so. Otherwise, you can press the “Start using the program” button.



When you have completed the wizard, you will see the program. You will notice that everything in the wizard is now located at the left of the program screen. (i.e. Immunize, Update, Search & Destroy). You are now ready to use the program.

