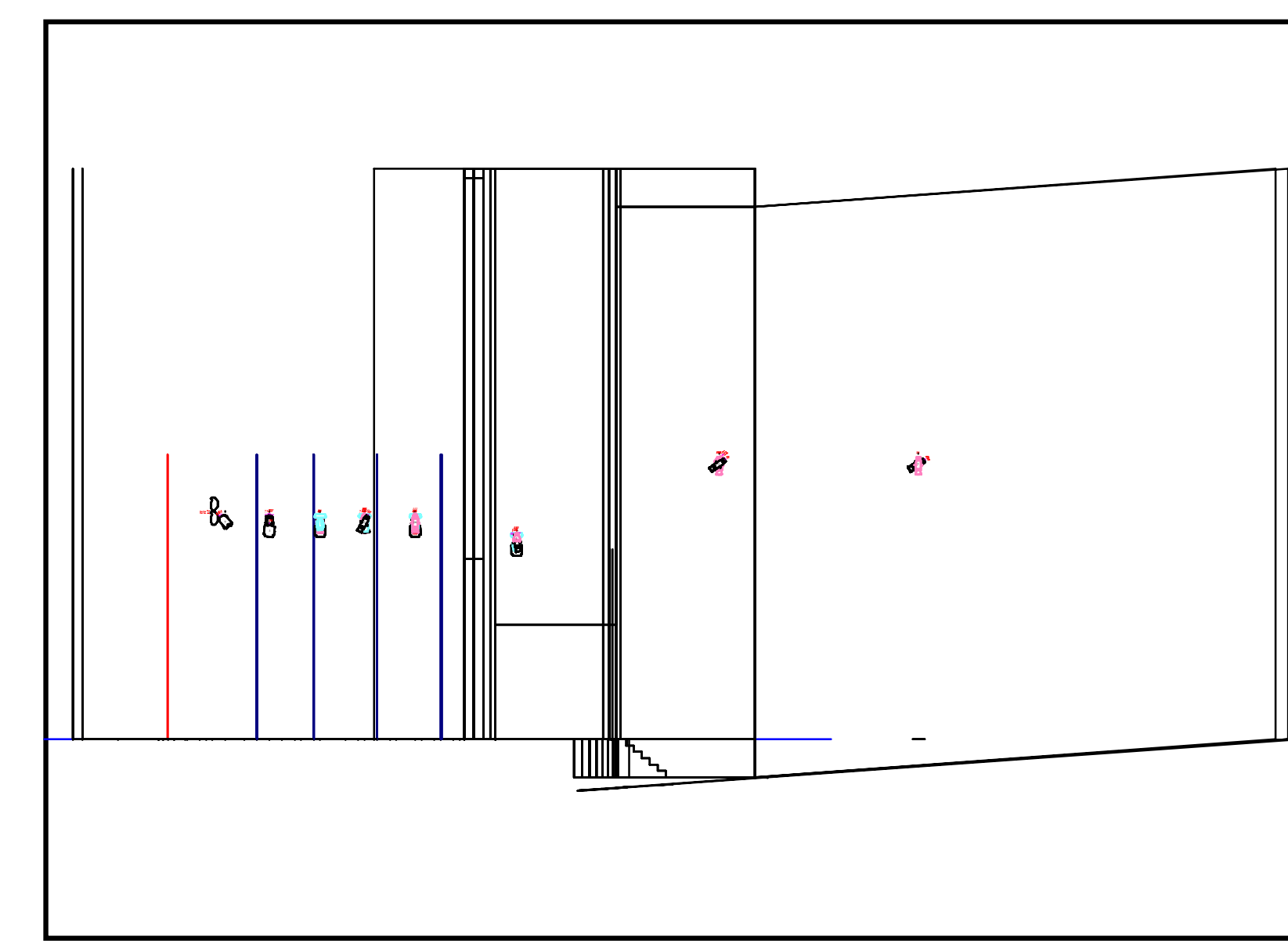
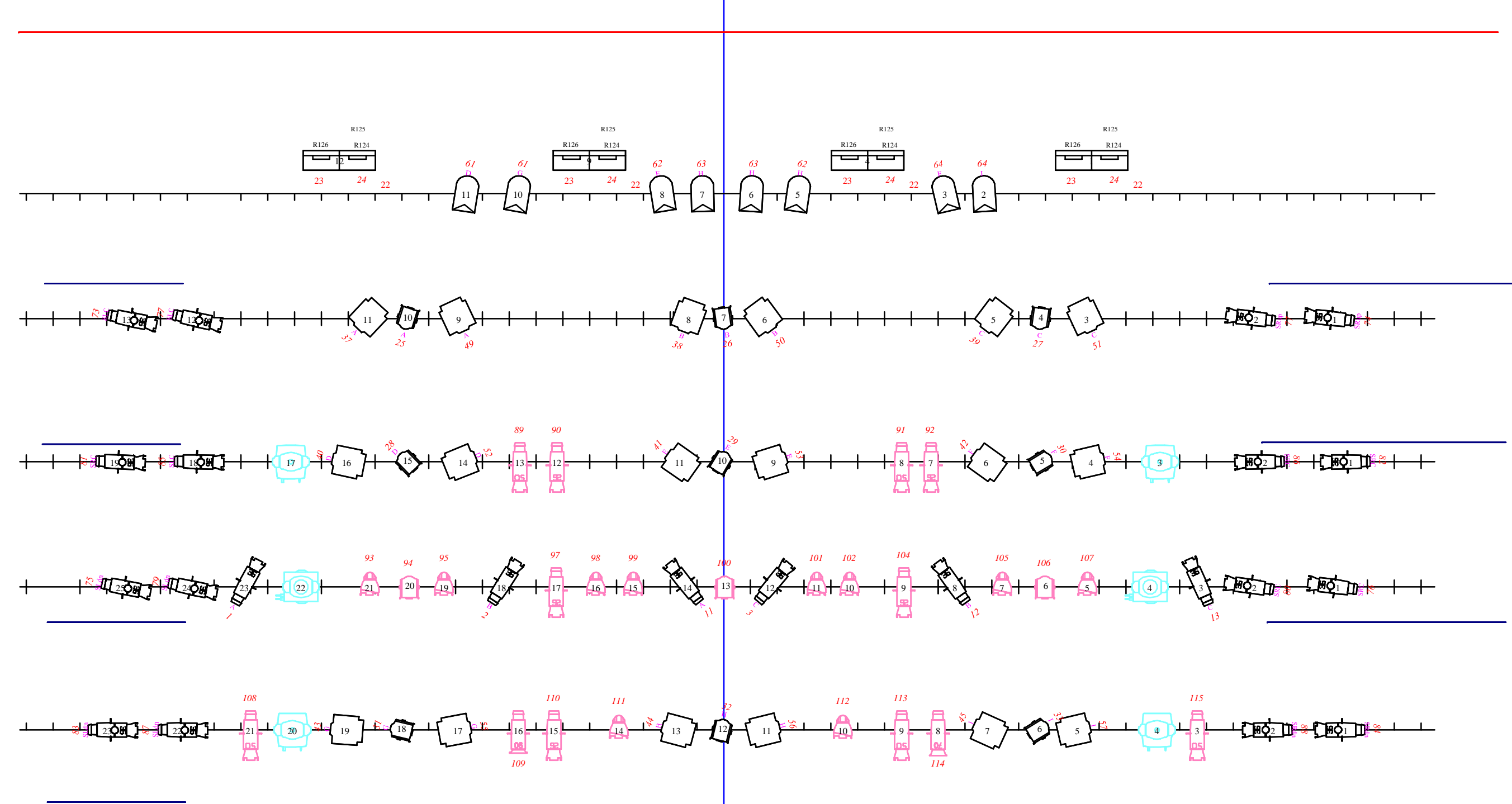


PLAN - 1/4" = 1'

25	Cycrama
24	traveler
23	Scrim (white)
22	
21	
20	5th Electric
19	
18	Legs
17	4th Electric
16	Border
15	
14	Legs
13	3rd Electric
12	
11	Half Traveler
10	
9	2nd Electric
8	Legs
7	Border
6	
5	1st Electric
4	Valance
3	Act Curtain
2	False Proscenium



Instrument Count (All Layers) 11/20/2009 12:37

Venue: Middle Tennessee State Univ. Shows: ACTF 2010
 Designer: alw Assistant:

Type	Lens	Count	Status
Altman Stage Lighting		18	HUNG
650 6" Fresnel		4	HUNG
ColorSpot 250 AT	Standard	4	HUNG
ColorWash 250 AT		4	HUNG
PAR 64		8	HUNG
Sky Cyc 04		4	HUNG
Source 4	19 Degree	4	HUNG
Source 4	26 Degree	23	HUNG
Source 4	36 Degree	32	HUNG
Source 4	50 Degree	5	HUNG
Source 4	70 Degree	1	HUNG
Source 4	90 Degree	1	HUNG
Source 4 Par	MFL	20	HUNG
Strand Lighting Studio	2kW	24	HUNG
		148	

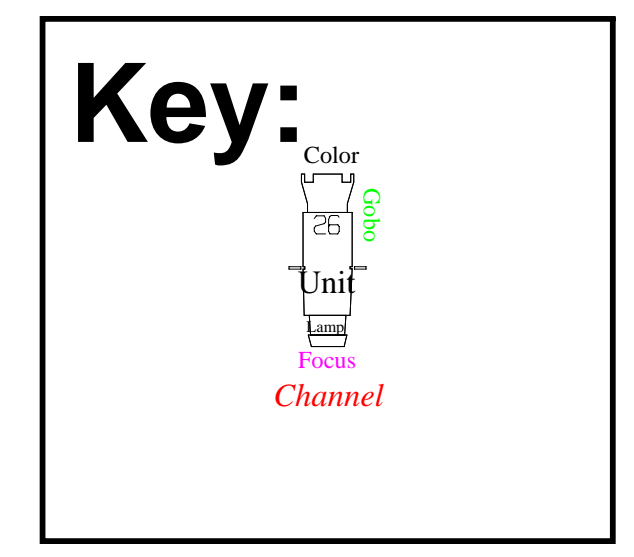
NOTES

-All fixtures are circled individually, EXCEPT
 Fixtures #2 and #12 on 4th Electric
 and the PARs on 5th Electric.

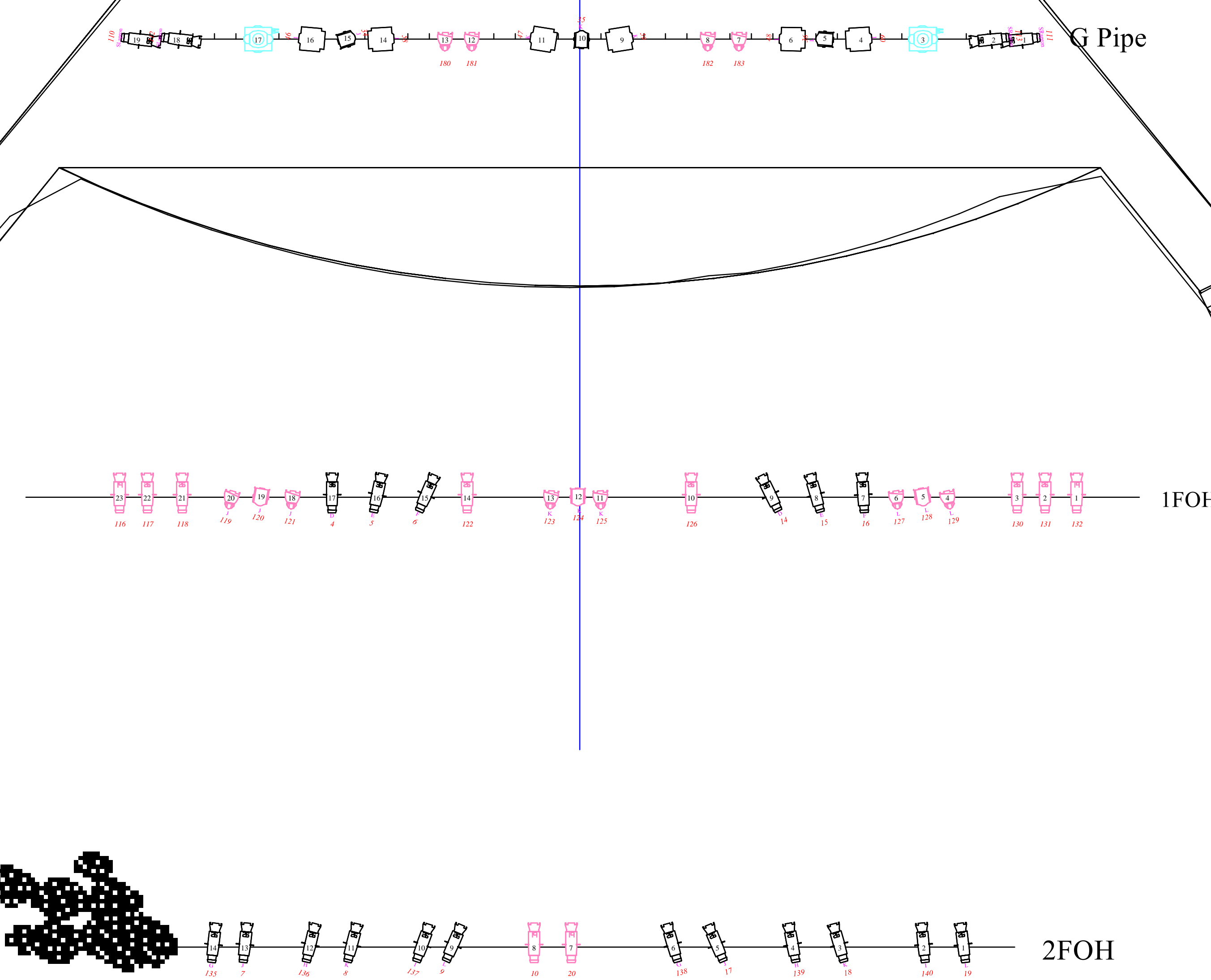
-Movers are included on the plot to
 show spacing, but are not part of the
 ACTF plot.

Legend

Symbol	Name
□	Strand Studio 2kW
▭	Sky cyc Plan 4
⊙	Source 4 36
⊙	Source 4 26
⊙	USITT Par 64 WFL
⊙	Fresnel 6 Inch Ev2
⊙	Source 4 Par MFL v3
⊙	Source 4 50
⊙	Source 4 19
⊙	Colorwash 250 AT Plan
⊙	Colorspot 250 AT Plan
⊙	Source 4 70
⊙	Source 4 90



Lighting Design:
Master Electrician:
Venue:
Design Date:
Initial Hang Date:
Revision Date:
Printed:
Printed By:



ACTF 2010	
Lighting Design:	A. Willingham
Master Electrician:	J. Kane & J. McGowan
Venue:	Tucker Theatre
Design Date:	9/16/2009
Initial Hang Date:	9/19/2009
Revision Date:	11/19/2009
Printed:	11/2/2009
Printed By:	alw