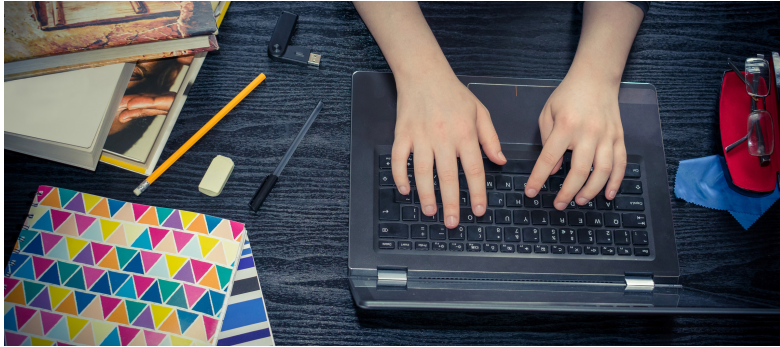


Advising Newsletter

College of Education
Middle Tennessee State University



Priority Registration Begins Today!

Priority Registration is a dedicated two weeks where all students that are currently enrolled at MTSU are able to register for classes for the following semester. This allows current students to get a jump start on registering and, hopefully, build an ideal schedule for next semester. If you haven't done so already, please do the following (it will save YOU stress in the future):

- Check your Assigned Registration Date & Time
- Check to see if you have any registration holds
- Meet with your assigned academic advisor!





When Can I Register?

As long as you have no registration restrictions, you can register for classes during or anytime following your Assigned Registration Date & Time.

To find your Assigned Registration Date & Time, visit **PIPELINE**, Click on **Registration & Student Records**, and click **Assigned Registration Time** under Priority Registration Tools.



Do I Have a Registration Hold?

To learn if you have a hold preventing you from registering for classes, visit **PIPELINE**, Click on **Registration & Student Records**, and click **Holds** under Priority Registration Tools.



"I Keep Getting a Registration Errors!"

For COE classes....

If you are getting a registration error for a COE class (ECE, ELED, EESE, SPED, READ, MLED), email your advisor the following information:

Full Name:

M#:

Major:

Course Prefix & Number (ex: ELED 1234)

CRN#

Registration Error:

For non-COE classes....

If you are getting a registration error for a class that is NOT within the College of Education, you will need to contact the specific department of the course (for example, if the course is BIOL 3000, you will need to contact the Biology Department.

**PAGE 27 OF YOUR STUDENT FOLDER
HAS A LIST OF ALL DEPARTMENT
NUMBERS TO CALL.**