



From the Director

The staff of the Office of Institutional Research presents the annual *Middle Tennessee State University Fact Book*. The purpose of the fact book is to provide comprehensive information and easy access to the most frequently requested information about the University. It has been used for planning, decision-making, policy formation, and public relations.

We are very pleased to announce that the 2001 *MTSU Fact Book* won a regional "Best Fact Book Award" at the annual conference of the Southern Association for Institutional Research (SAIR) held in Baton Rouge, Louisiana. SAIR is the regional professional affiliate for those engaged in institutional research at higher education institutions in the South. A panel of judges selected the award recipients.

For your convenience, an online version of the *MTSU Fact Book* is now available on the Institutional Research Web site at <http://www.mtsu.edu/~instres/irpublic.html>.

A special thank you is extended to the staff of Institutional Research for their valuable assistance in completing this year's fact book. Sincere appreciation is also extended to Suma Clark, Mitzi Brandon, Lawanda Baker, and Sheron Neeley in Publications and Graphics for their expert assistance in completing this project.

The fact book is an annual publication and is produced during the fall semester. We welcome your comments, reactions, and suggestions as a means of improving future editions.

Cornelia Wills, Ed.D.
Director of Institutional Research

General Information



Middle Tennessee State University History

2

Mission Statement

3

The Tennessee Higher Education Commission

4

The Tennessee Board of Regents

4

MTSU Administration

5

MTSU Organizational Chart

7



Middle Tennessee State University History

In 1909, the General Assembly of the State of Tennessee moved "to provide for the improvement of the system of Public Education of the State of Tennessee, that is to say, to establish a General Education Fund." The major thrust of the "improvement" was establishment of three normals or teacher-training institutions, one in each of the grand divisions of the state. Considerable competition among communities preceded the State Board of Education's decision to assign the middle Tennessee institution to Murfreesboro, a choice promoted by Andrew L. Todd and others.

An agreement made with the State Board of Education included \$180,000 from the county and city to purchase land and help with construction costs. The Murfreesboro City Council met in special session and unanimously voted to fund its share of \$80,000, but there was opposition in the County Court and the initial vote failed. Only after a resolution was read stating that "it is to the interest and advantage of said County, and citizens, to have said Normal School for the Middle Division of the said State of Tennessee, located in said Rutherford County..." did the body vote in favor of providing \$100,000. Because of that early support by community leaders, what we know today as MTSU was established, bringing economic, cultural, and educational impact to the area. Now, decades later, the community and University still are mutually supportive, and the University remains grateful for that relationship.

Campaigning was lively for several sites in and around Murfreesboro (population in 1910: 4,679) as a campus location was selected. The ultimate choice was property owned jointly by Tom Harrison and Joe Black which lay "just beyond the eastern town limits on a gentle swell of land." Eight acres were donated, and the State Board of Education paid \$5,000 for 20 adjacent acres.

The accepted bid for the first four buildings—a classroom and office building now known as Kirksey Old Main; a women's dormitory, now Rutledge Hall; a kitchen and dining hall, now the Alumni Center; and a heating plant—was \$137,855. There were virtually no trees because part of the land had been in crops only the season before, and a wet weather stream affected another large portion of the acreage.

This was the setting on September 11, 1911, when Middle Tennessee State Normal School, with 19 faculty members, opened its doors, offering a two-year teacher-training program and a four-year high school to 125 students. Each of those students paid a \$2.00 registration fee; room rent was \$1.50 per week

(in advance) and dining hall food was \$10.00 per month that first year. The dreams and visions of many individuals came to fruition that early Fall day, making it possible for thousands of students through the years to pursue *their* dreams.

As the world and those dreams changed, the institution changed. Degrees, programs, departments, schools, colleges, centers, and chairs were added. One way to chart the progress is by the evolution of names:

1911	Middle Tennessee State Normal School
1925	Middle Tennessee State Teachers College
1943	Middle Tennessee State College
1965	Middle Tennessee State University

And the students came—sometimes in years when enrollment elsewhere declined—and continue to come. Having passed the 10,000 mark in Fall 1971, the enrollment today is over 21,000.

Since 1911 more than 81,000 students have graduated from MTSU. These students can be found all over the globe in just about any profession imaginable. Each year, the MTSU Alumni Association recognizes representatives of that impressive body by honoring three Distinguished Alumni and awarding a Young Alumni Achievement Award.

Thousands of faculty members, administrators, and staff have worked through the years teaching, advising students, and operating and maintaining the complex institution. History is tied closely to the person at the helm. Presidents who have guided this progress through the decades are:

1911 - 1921	Robert Lee Jones
1922 - 1937	Prichett Alfred Lyon
1938 - 1957	Quinton Miller Smith
1958 - 1968	Quill Evan Cope
1969 - 1978	Melvin G. Scarlett
1979 - 1989	Sam H. Ingram
1990 - 1991	Wallace Prescott (interim)
1991 - 2000	James E. Walker
2000 - 2001	R. Eugene Smith (interim)
2001 -	Sidney A. McPhee

With full recognition of the foresight our founders had, we have to wonder in 2002 if they had any glimpses of the Normal School evolving to what has become a major university, second largest in the state with programs recognized nationally. This progress has continued through the past 91 years because of individuals who looked ahead, who insisted on quality, and who weren't afraid to break new ground.

Celebrate this journey through the years with us and share with us a vision for the future.

Source: MTSU Library





Mission Statement

Middle Tennessee State University, a major public institution of higher learning in the state, the Southeast, and the nation, is a member of the State University and Community College System of Tennessee. The University draws energy from and responds to the vibrant and diverse culture of middle Tennessee, known for its internationally recognized arts, entertainment, and music communities; an innovative health-care sector; a robust manufacturing economy; and the historic Tennessee Walking Horse. As a broad-based, comprehensive university, Middle Tennessee State University offers an extensive range of undergraduate programs and selected graduate programs, primarily serving students of the region but also attracting many others from across the nation and throughout the world. The University takes pride in providing quality educational programs that incorporate the most recent technologies to meet the changing needs of the dynamic environment. At the same time, it maintains a sense of community and a commitment to student-centered learning. Its focus on scholarship reflects an increasing emphasis on research, creative arts, and public and professional service-activities that mirror the vitality of its students, its faculty, and the region. Middle Tennessee State University remains committed to the education of a non-racially identifiable student body and promotes diversity and access without regard to race, gender, religion, national origin, age, disability, or veteran status.

LEARNING GOALS: Middle Tennessee State University helps students become educated individuals. Those who avail themselves of the educational opportunities provided will be prepared to:

1. live effectively in a changing, global society by broadening their interests and becoming lifelong learners;
2. observe, assess, and influence the contemporary world using scientific knowledge and an understanding of cultural and historical legacies;
3. think logically, critically, and creatively;
4. communicate clearly and precisely and understand the proper role of free expression in our society;
5. make sound judgments with an awareness of ethical, moral, and aesthetic values;
6. maintain physical and mental well-being;
7. acquire a working knowledge of a discipline or a group of related disciplines; and
8. participate actively in the world community by seeking and sharing knowledge, expertise, and creative undertakings.

UNIVERSITY GOALS: Accordingly, Middle Tennessee State University will:

1. provide student-support services and a quality of student life that create a campus environment conducive to learning and personal development;
2. encourage lifelong relationships between the University and its students;
3. recruit quality faculty and maintain support services to assist faculty in instruction;
4. provide resources to encourage research, creative activity, and public and professional service;
5. develop individual, corporate, and public support for the University;
6. encourage student-centered learning through the development of academic partnerships within the public and private sectors;
7. work continually to strengthen and enhance the academic core; and

8. provide financial and physical resources to accomplish the mission.

STUDENT CHARACTERISTICS: The University greatly values cultural diversity and actively promotes environments conducive to success for all students. Enrollment has grown dramatically over the past few years, a pattern predicted to continue as academic programming is enhanced and the population of the region increases. MTSU has raised academic standards and its freshman ACT scores annually exceed both state and national averages. The University Honors College and an aggressive scholarship program attract students with exceptional academic records seeking added intellectual challenges. Student support services include a nationally recognized program for disabled students, as well as cultural and athletic activities that complement the academic experience while strengthening the development of the individual student.

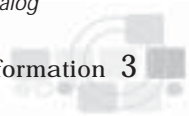
Middle Tennessee State University's student body is increasingly diverse and multicultural. Ethnic minorities account for approximately 14 percent of the student body, and the University's academic programs attract students from more than 70 countries. Many of the University's students are nontraditional; three-quarters of MTSU students are full-time. Although the University offers a full complement of on-campus activities and living arrangements, many students work off-campus, and the majority commute from surrounding communities.

UNIVERSITY ACADEMIC STRUCTURE: The University offers, through seven colleges and thirty-six academic departments, instruction in the liberal and fine arts, the sciences, education, business, mass communication, and a variety of other fields. The recording industry and aerospace programs attract students nationwide. The teacher education program has a distinguished history and is one of the largest in Tennessee. Students pursuing bachelor's degrees complete general studies courses that provide the skills and knowledge that are essential for major and minor programs.

The University's graduate offerings are vital to the professional development of the region. The College of Graduate Studies offers five doctoral, two educational specialists, and thirty master's programs; the largest enrollments are found in business administration, education, and psychology. Middle Tennessee State University anticipates expansion of its graduate programs in selected areas.

The University recruits nationally for talented and dedicated faculty members committed to teaching, research, creative activity, and public and professional service. The continuing-education program matches the expertise of the faculty with the evolving needs of the public. Nine Chairs of Excellence and two endowed chairs provide special opportunities for bringing faculty of exceptional reputation to the campus. The Center of Excellence for Historic Preservation, the Center of Excellence for Popular Music, the Center for the Study and Treatment of Dyslexia, and specially funded centers with national reputations enrich graduate and undergraduate instruction, research, and outreach programs.

Source: MTSU Undergraduate Catalog





The Tennessee Higher Education Commission

The Tennessee Higher Education Commission (THEC) was created by the General Assembly in 1967 in order to achieve better coordination and unity in the programs of public higher education in Tennessee. Middle Tennessee State University, which is a part of the Board of Regents and the Board of Trustees of The University of Tennessee System, is coordinated by the Tennessee Higher Education Commission. The Commission is composed of the following members:

William Ransom Jones	Murfreesboro, Chair
June Scobee Rodgers	Signal Mountain, Vice Chair
A.C. Wharton, Jr.	Memphis, Vice Chair
Dale Kelley	Huntingdon, Secretary
Steve Adams	Nashville, State Treasurer
Riley C. Darnell	Nashville, Secretary of State
Elizabeth Kirk	Knoxville
Debby Patterson Koch	Nashville
Joe E. Lancaster	Columbia
Omar Lopez	Tullahoma
John Morgan	Nashville, Comptroller
Jim Powell, Sr.	Limestone
Brad Windley	Tullahoma
Douglas E. Wood	Nashville, Exec. Dir., State Board of Education (ex-officio)
Eleanor E. Yoakum	Knoxville

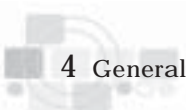
Source: The Tennessee Higher Education Commission
(www.state.tn.us/thecl/)

The Tennessee Board of Regents

The Tennessee Board of Regents (TBR) was created in 1972 by the General Assembly. The Tennessee Board of Regents consists of 45 institutions: 6 universities, 13 two-year institutions, and 26 technology centers. The TBR is the sixth largest system of higher education in the nation. The members of the Tennessee Board of Regents consist of the following:

Don Sundquist	Governor of Tennessee, Chair
Charles W. Manning	Nashville, Chancellor, Tennessee Board of Regents
Richard G. Rhoda	Nashville, Exec. Dir., Tennessee Higher Education Commission
Faye Taylor	Nashville, Commissioner of Education (ex-officio)
John W. Rose	Nashville, Commissioner of Agriculture (ex-officio)
Frank Barnett	Knoxville
Edgar R. "Buddy" Bowers	Harriman
Demetra Godsey Boyd	Clarksville
Noble Cody	Cookeville
Robert Jack Fishman	Morristown
Arles B. Greene	Goodlettsville
Jonas Kisber	Jackson
W. Keith McCord	Knoxville
Leslie Parks Pope	Kingsport
J. Stanley Rogers	Manchester
Maxine A. Smith	Memphis
Charles "Lynn" Swafford	Harriman
William H. Watkins, Jr.	Memphis
Jessica Whitehead	Cookeville

Source: The Tennessee Board of Regents
(www.tbr.state.tn.us)





MTSU Administration

Office of the President

Sidney A. McPhee, president
Kimberly S. Edgar, executive assistant to the president
Sara Rosson, university counsel and assistant to the president

Tammie C. Allen, administrative assistant

Affirmative Action/Equal Opportunity, Forrestine White Williams, director

Athletics, Boots Donnelly, director

Internal Auditor, Brenda Burkhart, director

Academic Affairs, Division of

Robert E. Eaker, interim executive vice president and provost

L. Diane Miller, interim vice provost

Rebecca Cole, associate vice president

Faye Johnson, assistant to the executive vice president and provost

Admissions, Lynn Palmer, director

African American Studies, Adonijah Bakari, director

Aging Studies, Ron Aday, director

Center for Historic Preservation, Carroll Van West, director

Center for Popular Music, Paul F. Wells, director

College of Graduate Studies, Donald L. Curry, vice provost for research and dean

Peter Cunningham, interim associate dean

Continuing Studies and Public Service, Rosemary W. Owens, dean

Developmental Studies, Marva Lucas, interim chair

Enrollment Management, Sherrian Huddleston, interim assistant vice president

General Studies, William J. Badley, director

Global Studies, Doug Heffington, director

Honors College, John Paul Montgomery, dean

Institutional Effectiveness, Planning, and Research, executive director, vacant

Institutional Research, Cornelia Wills, director

James E. Walker Library, Don Craig, dean

Research and Sponsored Programs, Myra Norman, director

Women's Studies, Elyce R. Helford, director

College of Basic and Applied Sciences

Thomas J. Cheatham, dean

Lynn C. Parsons, interim associate dean

Aerospace, Paul A. Craig, chair

Agribusiness and Agriscience, Harley W. Foutch, director

Biology, George G. Murphy, chair

Chemistry, Earl F. Pearson, chair

Computer Science, Richard Detmer, chair

Engineering Technology and Industrial Studies, Walter W. Boles, chair

Mathematical Sciences, Curtis K. Church, chair

Military Science, Todd Overby, chair

Nursing, Pamela G. Holder, director

Physics and Astronomy, Robert F. Carlton, chair

Jennings A. Jones College of Business

E. James Burton, dean

Dwight Bullard, associate dean

Accounting, Paula Thomas, interim chair

Business Education, Marketing Education, and Office Management, Linda McGrew, chair

Computer Information Systems, Stanley E. Gambill, interim chair

Economics and Finance, John Lee, chair

Management and Marketing, Jill Austin, chair

Business and Economic Research Center, David Penn, director

Japan-U.S. Program of MTSU, Kiyoshi Kawahito, director

College of Education and Behavioral Science

Gloria Bonner, dean

Dorothy Craig, associate dean for teacher education

Criminal Justice Administration, Deborah Newman, interim chair

Educational Leadership, James O. Huffman, chair

Elementary and Special Education, Connie O. Jones, interim chair

Health, Physical Education, Recreation, and Safety, Dianne Bartley, interim chair

Human Sciences, Dellmar Walker, interim chair

Psychology, Larry Morris, chair

Pittard Campus School, Stan Baskin, director

Instructional Technology Support Center, Connie Schmidt, director

College of Liberal Arts

John N. McDaniel, dean

Anne T. Sloan, associate dean

Art, Mark D. Price, chair

English, William Connelly, chair

Foreign Languages and Literatures, Deborah Mistrion, chair

Geosciences, Ronald L. Zawislak, chair

History, Thaddeus Smith, chair

Music, Stephen Shearon, interim director

Philosophy, Ron Bombardi, chair

Political Science, John R. Vile, chair

Social Work, Charles Frost, chair

Sociology and Anthropology, Edward Kick, chair

Speech and Theatre, Russell Church, chair

College of Mass Communication

Anantha S. Babbili, dean

Electronic Media Communication, Robert W. Spires, chair

Journalism, Richard Campbell, director

Recording Industry, Cosette R. Collier, interim chair

WMOT, John High, general manager

Development and University Relations, Division of

William J. Bales, vice president

Susan Barnes, assistant vice president

Alumni Relations, Debbie Coppinger, director

Development, director, vacant

News and Public Affairs, Doug Williams, executive director

Photographic Services, Jack Ross, director

Publications and Graphics, Suma Clark, director

Information Technology, Division of

Lucinda Lea, vice president and chief information officer

Jerry Gentry, assistant vice president

Administrative Applications, Lisa Rogers, director

Academic Applications, Barbara Draude, director

Campus Network, Greg Schaffer, director

ID System and Support Staff, Robin Jones, director

Telecommunications, Steve Prichard, director

Business and Finance, Division of

John Cothorn, interim vice president

Michael E. Gower, associate vice president

Alan R. Thomas, controller

Administrative Services, Deborah D. Roberts, director

Budget, Kathy R. Thurman, director

Campus Planning, Patricia S. Miller, director

Facilities Services, David Gray, director

Human Resource Services, Kathy Musselman, director

Procurement Services, Joe Hugh, director

Public Safety, Jack Drugmand, director

Student Affairs, Division of

Robert Kyle Glenn, Jr., vice president and vice provost for enrollment management

David Hays, associate vice president

Gene Fitch, associate dean

Academic Support Services, Debra Sells, associate vice president

Adult Services Center, Carol Ann Baily, director

Career and Employment Center, Martha Turner, director

Cooperative Education, Wayne Rollins, director

Day Care Center, Nancy Ruth James, Director

Disabled Student Services, John Harris, director

Enrollment Management, Sherian Huddleston, interim assistant vice president

Financial Aid, David L. Hutton, director

Guidance Services, Jane Tipps, director

International Programs and Services, Tech Wubneh, director

Multicultural Affairs, Ralph Metcalf, director

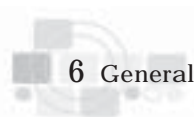
Student Health Services, Richard Chapman, director

Records, Sherian Huddleston, director

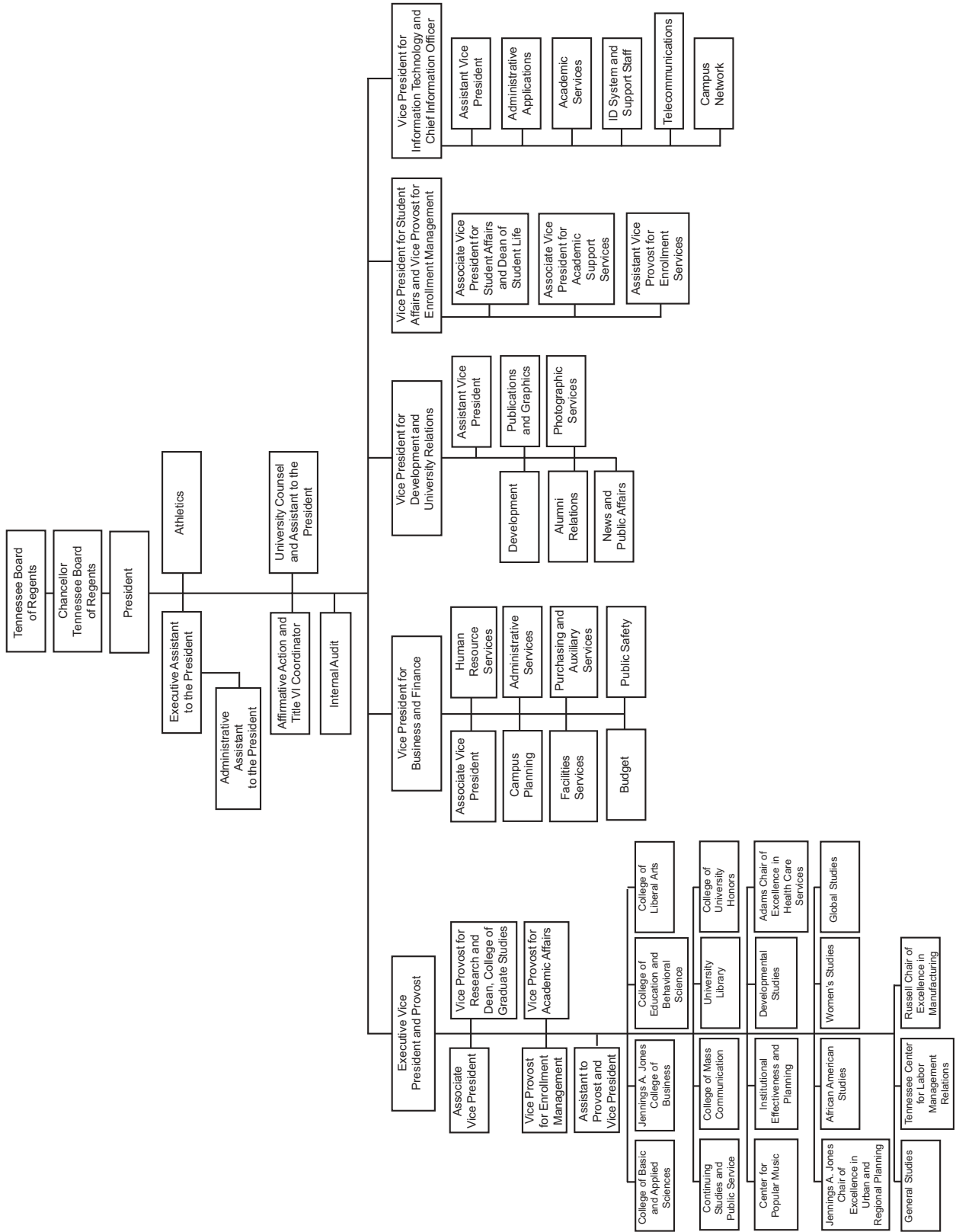
Student Health Services, Richard Chapman, director

Student-Athlete Enhancement Center, Jeanne Massaquoi, coordinator

Women's Center, Carol Ann Baily, interim director



MTSU Organizational Chart



Source: MTSU July Budget
2002-2003

Admission



Admission Standards	10
University Honors College	11
Admission Application Statistics	12
ACT Scores	13
Fall Semester Growth	14
Feeder High Schools	15
Transfer Students	16
Enrollment by State of Residence	17
Enrollment by Tennessee County	18
Enrollment by Tennessee County Map	19



Undergraduate Admission Standards

Standard Admission: ACT composite score of 20 or Academic GPA of 2.80 on a 4.00 scale

ADMISSION AS A FRESHMAN

Applicants for degree admission as first-time freshmen must provide an official high school transcript showing graduation along with the \$15.00 application fee. The transcript of graduates of Tennessee public high schools must include a notation including that the student passed the required proficiency examination. In addition, all students graduating from high school in 1993 or thereafter must have completed the high school subjects units listed below for regular admission to MTSU. Students graduating from high school in 1989-1992 must meet the 1989 14-unit requirements (those listed below but excluding visual and/or performing arts).

SUBJECT AREA	REQUIRED UNITS
English	4
Visual and/or Performing Arts (includes a variety of possibilities in either performance or survey courses)	1
Algebra I (or Math for Technology II), Algebra II, and Advanced Math or Integrated Math Sequence (Integrated Mathematics I, II, III) (or Advanced Math course with Geometry as a major component)	3
Natural/Physical Sciences (including at least one unit with lab of Biology, Chemistry, or Physics)	2
Social Studies (World History, Ancient History, Modern History, European History, World Geography)	1





University Honors College

On August 1, 1998, Middle Tennessee State University became the first public university in the state of Tennessee to have an honors college. On May 8, 1999, the new college had its first graduate.

On December 12, 2001, MTSU and the University Honors College celebrated a successful fund-raising campaign to match the two million dollar gift donated by Paul and Lee Martin for construction of a new University Honors College building. The groundbreaking ceremony for the new building was held in January of 2002.



The University Honors College was established to provide motivated students with the opportunity to fully develop their intellectual potential. The intent of the Honors College is to provide an enriched educational experience for those students who wish to get the most from their college careers. In order to achieve this goal, the Honors College offers a setting of small classrooms to enhance interaction between students and faculty. The College structure allows any qualifying student, regardless of major, the opportunity to participate in this unique program which combines the benefits of a small, select college with the resources of a large university.

The Honors College, in addition to small classes, offers students the opportunity to enroll in interdisciplinary seminars, to engage in independent research, to reside in the Honors Living and Learning Center, and to graduate with University Honors. It offers an opportunity for personal growth and seeks to promote an attitude of excellence among its students and faculty. For Fall 2002, 1,051 students were enrolled in 95 honors courses.

To be admitted to the University Honors College as an entering freshman, a student must have a minimum ACT composite score of 26 (1170 SAT) and a 3.00 GPA or a high school GPA of 3.50 and ACT of 22 (950 SAT). Returning college students or transfer students must have an overall college GPA of 3.00 or higher.

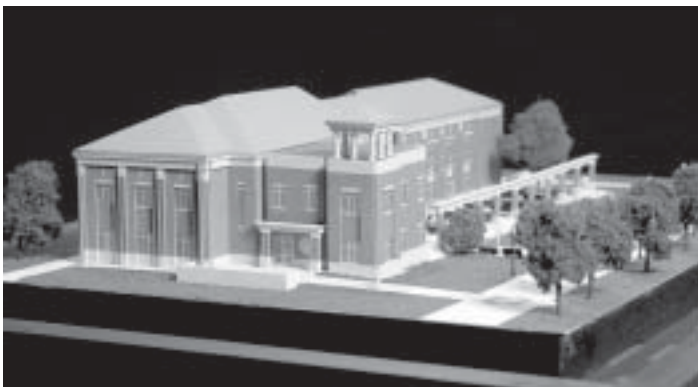
To graduate from the Honors College students must complete the following:

- ◆ 18 hours of lower-division Honors coursework;
- ◆ 18 hours of upper-division Honors coursework including 6 hours of interdisciplinary courses and an independent research project, 8 hours upper-division, and one-hour thesis tutorial.

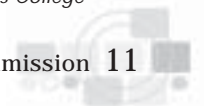
All students who graduate with Honors from the University Honors College deserve recognition.

- ◆ Students receive a certificate upon completion of the lower-division requirement.
- ◆ Students receive a certificate of graduation from the University Honors College upon completion of Honors coursework and independent study project.
- ◆ Transcripts specify Honors courses.
- ◆ Students graduating from the University Honors College wear special academic regalia at graduation.
- ◆ Students receive a beautiful University Honors College medallion.

Questions should be directed to the Honors College Office, Peck Hall, Room 106, (615) 898-2152.



Source: MTSU University Honors College



Admission Application Statistics

	Fall 2000		Fall 2001		Fall 2002	
	# App.	% Chg.	# App.	% Chg.	# App.	% Chg.
UNDERGRADUATE						
Freshmen						
Accepted Applicants	4,829	13.4%	4,939	2.3%	5,538	12.1%
Incomplete Applicants	825	7.7%	863	4.6%	987	14.4%
Denied Applicants	246	1.7%	288	17.1%	331	14.9%
Cancelled	216	-17.6%	232	7.4%	253	9.1%
Total Freshmen Applied	6,116	10.6%	6,322	3.4%	7,109	12.4%
Transfers						
Accepted Applicants	2,233	-0.7%	2,423	8.5%	2,445	0.9%
Incomplete Applicants	839	8.3%	930	10.8%	1,057	13.7%
Denied Applicants	57	-34.5%	96	68.4%	98	2.1%
Cancelled	20	-4.8%	28	40.0%	37	32.1%
Total Transfers Applied	3,149	0.5%	3,477	10.4%	3,637	4.6%
Readmissions						
Accepted Applicants	1,668	3.6%	1,873	12.3%	1,774	-5.3%
Incomplete Applicants	155	21.1%	140	-9.7%	152	8.6%
Denied Applicants	23	-14.8%	43	87.0%	45	4.7%
Cancelled	3	50.0%	3	0.0%	3	0.0%
Total Readmissions Applied	1,849	4.6%	2,059	11.4%	1,974	-4.1%
Summary Undergraduates						
Accepted Applicants	8,730	7.5%	9,235	5.8%	9,757	5.7%
Incomplete Applicants	1,819	9.0%	1,933	6.3%	2,196	13.6%
Denied Applicants	326	-8.4%	427	31.0%	474	11.0%
Cancelled	239	-16.1%	263	10.0%	293	11.4%
Total Undergraduates Applied	11,114	6.6%	11,858	6.7%	12,720	7.3%

GRADUATE

New Graduates						
Accepted Applicants	404	-20.2%	461	14.1%	447	-3.0%
Incomplete Applicants	471	4.4%	445	-5.5%	475	6.7%
Denied Applicants	31	-31.1%	26	-16.1%	29	11.5%
Cancelled	33	65.0%	47	42.4%	41	-12.8%
Total New Graduates Applied	939	-8.1%	979	4.3%	992	1.3%
Transfers						
Accepted Applicants	17	112.5%	11	-35.3%	8	-27.3%
Incomplete Applicants	7	-12.5%	10	42.9%	16	60.0%
Denied Applicants	3	—	2	-33.3%	—	—
Cancelled	0	-100.0%	0	—	1	—
Total Transfers Applied	27	58.8%	23	-14.8%	25	8.7%
Readmissions						
Accepted Applicants	169	-16.7%	177	4.7%	179	1.1%
Incomplete Applicants	54	10.2%	57	5.6%	33	-42.1%
Denied Applications	0	-100.0%	2	—	1	-50.0%
Cancelled	0	-100.0%	0	—	—	—
Total Readmissions Applied	223	-12.5%	236	5.8%	213	-9.7%
Summary Graduates						
Accepted Applicants	590	-17.7%	649	10.0%	634	-2.3%
Incomplete Applicants	532	4.7%	512	-3.8%	524	2.3%
Denied Applicants	34	-27.7%	30	-11.8%	30	0.0%
Cancelled	33	50.0%	47	42.4%	42	-10.6%
Total Graduates Applied	1,189	-8.1%	1,238	4.1%	1,230	-0.6%

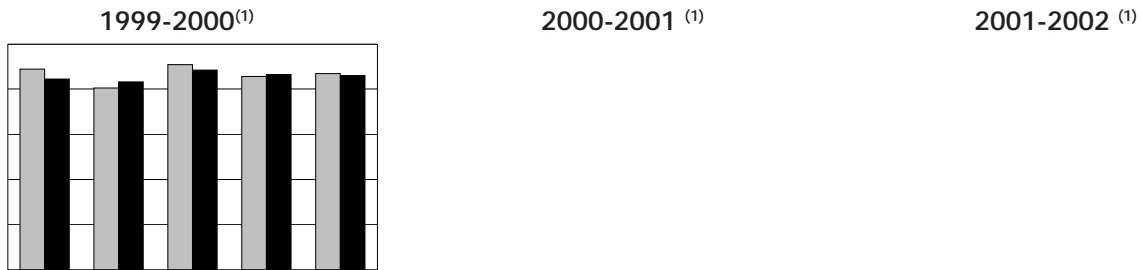
Source: MTSU Admissions; College of Graduate Studies



Freshmen ACT Profile Fall 2002

Score	English		Math		Reading		Science		Composite	
	Headcount	%	Headcount	%	Headcount	%	Headcount	%	Headcount	%
01-10	4	0.14%	0	0.00%	4	0.14%	6	0.21%	0	0.00%
11-15	177	6.21%	205	7.20%	220	7.72%	76	2.67%	48	1.68%
16-20	870	30.54%	1,362	47.81%	673	23.62%	1,082	37.98%	1,016	35.66%
21-25	1,120	39.31%	906	31.80%	1,042	36.57%	1,311	46.02%	1,285	45.10%
26-30	523	18.36%	338	11.86%	667	23.41%	322	11.30%	453	15.90%
31-36	155	5.44%	38	1.33%	243	8.53%	52	1.83%	47	1.65%
TOTAL	2,849		2,849		2,849		2,849		2,849	

Average ACT Scores 1999-2002



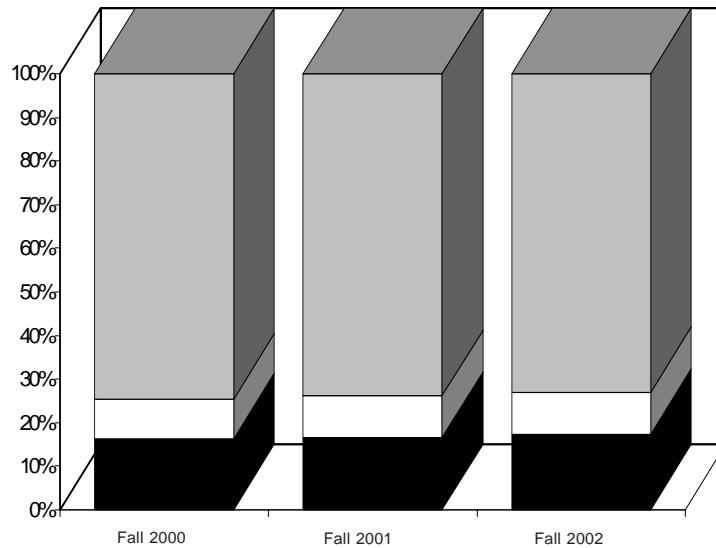
Category	1999-2000 ⁽¹⁾		2000-2001 ⁽¹⁾		2001-2002 ⁽¹⁾	
	MTSU	National ⁽²⁾	MTSU	National ⁽²⁾	MTSU	National ⁽²⁾
English	21.3	21.1	22.0	21.3	22.0	21.6
Usage/Mechanics	10.8	10.6	11.2	10.7	11.2	10.9
Rhetorical Skills	10.9	11.0	11.3	11.0	11.3	11.2
Mathematics	19.9	21.3	20.2	21.2	20.2	21.7
Elementary Algebra	10.7	11.3	10.9	11.3	10.8	11.5
Alg./Coord.Geometry	9.8	10.5	9.9	10.4	10.0	10.6
Plane Geom./Trig.	10.0	10.9	10.2	10.8	10.3	11.1
Reading	21.8	22.1	22.5	22.0	22.2	22.5
Social Studies/Sci.	10.9	11.0	11.3	11.1	11.3	11.4
Arts/Literature	11.3	11.5	11.7	11.4	11.6	11.7
Science Reasoning	20.8	21.6	21.3	21.5	21.2	21.9
Composite	21.1	21.7	21.6	21.6	21.5	22.1

(1) Only freshman class that enrolled at MTSU.

(2) Average norm for national in the previous year.

Source: MTSU Admissions

Fall Semester Growth



	Fall 2000	Fall 2001	Fall 2002
■ New Students	3,318	3,390	3,624
□ New Transfers	1,824	1,932	1,914
▒ Continuing Students	13,979	14,751	15,625
TOTAL ENROLLMENT	19,121	20,073	21,163

Category		Fall 2000	Fall 2001	Fall 2002
New Students	First-Time Freshmen	2,830	2,904	3,136
	New Undergraduate Special	28	30	23
	New Graduate Special	51	51	54
	New Masters	403	398	394
	New Ed.S./Doctoral	6	7	6
	Other Undergraduate			11
	Total New Students	3,318	3,390	3,624
New Transfers	Freshmen	532	622	553
	Sophomores	568	584	618
	Juniors	478	527	514
	Seniors	246	199	229
	Total New Transfer Students	1,824	1,932	1,914
Continuing Students	Freshmen	1,669	1,876	1,997
	Sophomores	2,803	2,963	3,170
	Juniors	2,852	2,957	3,083
	Seniors	5,159	5,367	5,739
	Undergraduate Special	71	85	69
	Graduate Special	119	155	175
	Masters	1,150	1,166	1,202
	Ed.S.	48	62	52
	Doctoral	97	104	120
	High School Students	11	16	18
	Total Continuing Students	13,979	14,751	15,625
Overall Growth	Enrollment (Headcount)	19,121	20,073	21,163
	Enrollment (FTE)	16,339	17,125	18,151

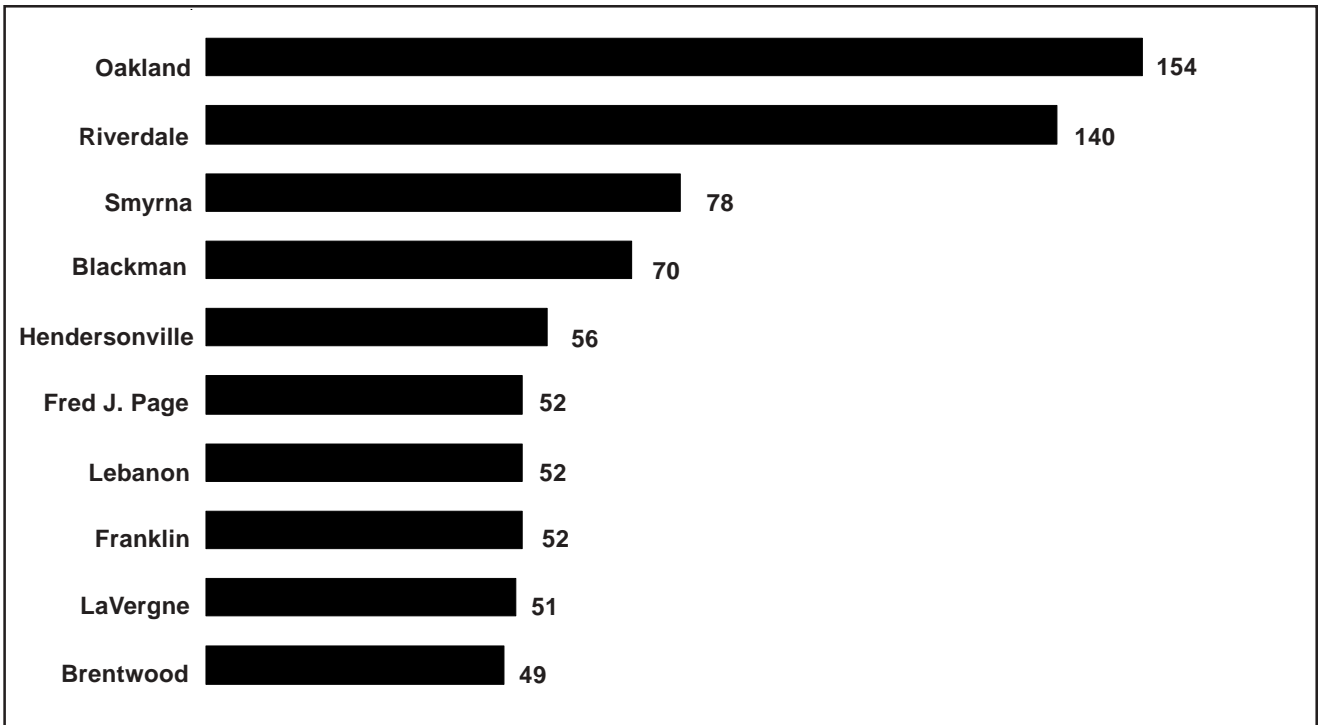
Source: MTSU Institutional Research



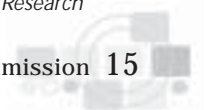
Feeder High Schools

Top Tennessee High Schools of First-Time Freshmen Fall 2002

Rank	High School Name	City	No.	Rank	High School Name	City	No.
1	Oakland High School	Murfreesboro	154	17	Beech High School	Hendersonville	29
2	Riverdale High School	Murfreesboro	140	18	Hillwood High School	Nashville	26
3	Smyrna High School	Smyrna	78	19	Warren County Senior High School	McMinnville	25
4	Blackman High School	Murfreesboro	70	20	Central High School	Shelbyville	24
5	Hendersonville High School	Hendersonville	56	20	Central High School	Columbia	24
6	Fred J. Page High School	Franklin	52	21	Germantown High School	Germantown	23
6	Lebanon High School	Lebanon	52	22	Coffee Co. Central High School	Manchester	21
6	Franklin High School	Franklin	52	22	Spring Hill High School	Columbia	21
7	LaVergne High School	LaVergne	51	23	Goodpasture Christian School	Madison	20
8	Brentwood High School	Brentwood	49	24	Glenclyff High School	Nashville	19
9	Centennial High School	Franklin	45	24	Collierville High School	Collierville	19
9	John Overton Comprehensive H S	Nashville	45	25	Cannon County High School	Woodbury	18
10	Antioch High School	Antioch	43	25	Jackson Central Merry High School	Jackson	18
11	Mt Juliet Senior High School	Mt Juliet	41	26	Hillsboro High School	Nashville	17
12	Dickson County Senior High Schl	Dickson	39	27	Martin Luther King Magnet	Nashville	16
13	Tullahoma Senior High School	Tullahoma	37	28	Dekalb County High School	Smithville	12
14	McGavock High School	Nashville	36	29	Donelson Christian Academy	Nashville	10
15	Father Ryan High School	Nashville	35	29	Smith County High School	Carthage	10
16	Hunters Lane High School	Nashville	33				
Subtotal							1,460
Other							1,676
Total First -Time Freshmen							3,136



Source: MTSU Institutional Research





Transfer Students

New Undergraduate Transfers from Institutions in Tennessee Fall Terms 2000-2002

Institution	2000	2001	2002	Institution	2000	2001	2002
American Baptist College	1	0	1	Memphis College of Arts	0	0	1
Aquinas College	3	10	4	Milligan College	0	1	0
Austin Peay State Univ.	37	28	33	Motlow State Comm. Coll.	154	166	169
Baptist College of Health Science	0	0	1	Nashville State Technical Comm. Coll.	95	106	123
Belmont University	21	19	25	North Central Institute	1	0	0
Bethel College	1	3	2	Northeast State Tech. Comm. Coll.	7	4	4
Bryan College	1	1	1	Nossi College of Art	0	0	2
Carson-Newman College	6	1	4	O'More College of Design	2	4	4
Chattanooga State Technical	29	45	36	Pellissippi State Tech. Comm. Coll.	31	29	39
Christian Brothers University	2	3	2	Rhodes College	2	0	1
Cleveland State Comm. College	27	8	21	Roane State Comm. College	17	28	33
Columbia State Comm. College	178	178	152	Southern Adventist University	0	0	2
Cumberland School of Tech.	0	1	0	Southwest Tenn. Comm. Coll.-Macon	9	13	7
Cumberland University	13	21	9	Southwest Tenn. Comm. Coll.-Union	10	15	14
David Lipscomb University	26	26	28	Tennessee State University	35	33	38
Draughons College	5	3	9	Tennessee Tech University	52	49	48
Dyersburg State Comm. Coll.	7	8	12	Tennessee Temple University	0	1	1
East Tenn. State University	18	18	12	Tennessee Wesleyan College	1	0	1
Fisk University	0	1	1	The University of Memphis	25	33	37
Free Will Baptist Bible Coll.	3	0	1	Trevecca Nazarene University	7	10	17
Freed-Hardeman College	4	5	10	Tusculum College	0	0	1
Fugazzi College	0	1	0	Union University	13	7	5
Harding Univ. Graduate School	0	1	0	University of Tennessee-Knoxville	69	93	75
Hiwassee College	5	3	2	Univ. of Tenn. Health Science	0	1	0
ITT Technical Institute	5	3	1	Univ. of Tenn.-Chattanooga	39	28	32
Jackson State Comm. College	40	46	53	Univ. of Tenn.-Martin	38	36	26
John A. Gupton College	1	0	0	University of the South	1	7	6
King College	0	1	0	Vanderbilt University	9	2	3
Knoxville Business College	1	0	0	Volunteer State Comm. Coll.	167	172	168
Lambuth University	7	6	3	Walters State Comm. Coll.	11	15	11
Lane College	1	6	5	Watkins Institute	2	2	3
Lee College	1	4	5				
Lincoln Memorial University	0	1	1	OUT OF STATE	575	616	598
Martin Methodist College	5	8	7				
Maryville College	4	2	4	TOTAL	1,824	1,932	1,914

Source: MTSU Institutional Research

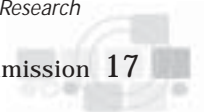


Enrollment by State of Residence

Fall Terms 2000-2002

State	2000	2001	2002	State	2000	2001	2002
Alabama	122	137	126	Nebraska	5	3	2
Alaska	1	2	1	Nevada	2	4	1
Arizona	8	7	6	New Hampshire	0	4	5
Arkansas	25	27	42	New Jersey	8	12	10
California	33	23	21	New Mexico	4	3	2
Colorado	7	5	7	New York	23	27	29
Connecticut	7	8	5	North Carolina	32	40	38
Delaware	0	3	2	North Dakota	1	1	0
District of Columbia	0	0	1	Ohio	58	52	51
Florida	57	53	46	Oklahoma	21	19	30
Georgia	177	191	214	Oregon	1	3	2
Hawaii	1	1	0	Pennsylvania	40	55	41
Illinois	50	58	63	Rhode Island	4	3	2
Indiana	45	33	27	South Carolina	56	57	58
Iowa	4	8	10	South Dakota	3	3	3
Kansas	13	18	19	Tennessee	17,485	18,345	19,402
Kentucky	146	159	163	Texas	51	56	53
Louisiana	39	36	33	Utah	1	3	0
Maine	2	2	1	Vermont	1	0	1
Maryland	36	40	55	Virginia	96	114	128
Massachusetts	15	11	10	Washington	4	4	1
Michigan	26	28	30	West Virginia	26	27	19
Minnesota	9	10	10	Wisconsin	15	11	13
Mississippi	51	58	69	Wyoming	0	2	1
Missouri	34	35	30	Foreign Countries	274	270	277
Montana	2	2	3				
				TOTAL	19,121	20,073	21,163

Source: MTSU Institutional Research





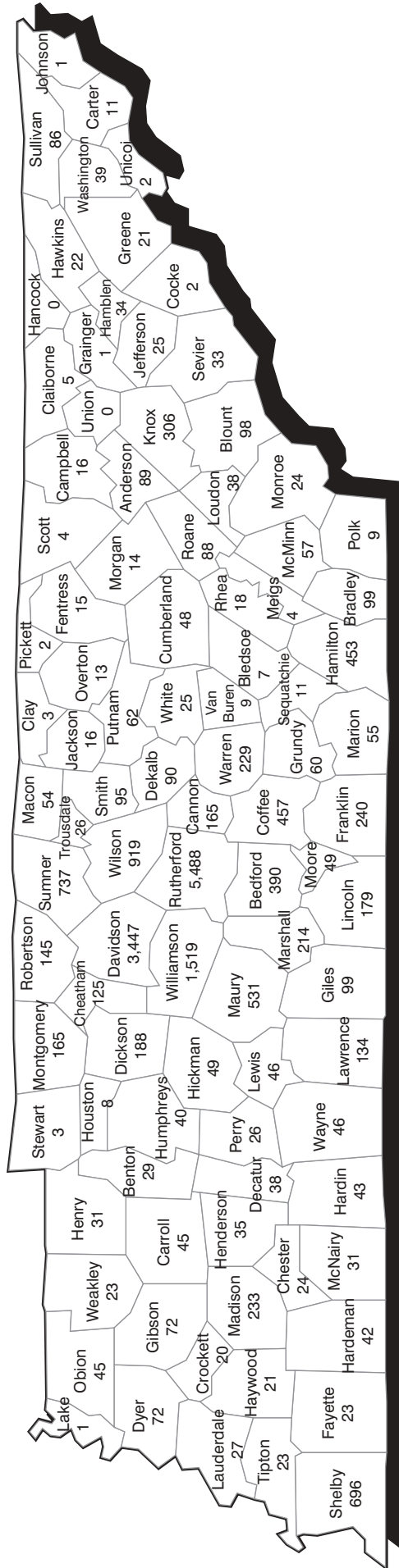
Enrollment by Tennessee County

Fall Terms 2000-2002

County	2000	2001	2002	County	2000	2001	2002
Anderson	65	71	89	Lauderdale	27	28	27
Bedford	363	384	390	Lawrence	106	90	134
Benton	23	21	29	Lewis	50	52	46
Bledsoe	4	6	7	Lincoln	141	159	179
Blount	81	82	98	Loudon	23	35	38
Bradley	95	107	99	McMinn	54	53	57
Campbell	6	8	16	McNairy	19	23	31
Cannon	167	173	165	Macon	30	47	54
Carroll	42	33	45	Madison	179	208	233
Carter	7	11	11	Marion	44	57	55
Cheatham	105	125	125	Marshall	244	227	214
Chester	10	17	24	Maurry	480	496	531
Claiborne	3	7	5	Meigs	7	4	4
Clay	5	4	3	Monroe	20	27	24
Cocke	3	4	2	Montgomery	138	155	165
Coffee	447	452	457	Moore	42	42	49
Crockett	16	17	20	Morgan	10	15	14
Cumberland	43	45	48	Obion	25	30	45
Davidson	3,302	3,373	3,447	Overton	12	9	13
Decatur	23	31	38	Perry	16	13	26
DeKalb	70	97	90	Pickett	5	4	2
Dickson	168	185	188	Polk	8	7	9
Dyer	54	60	72	Putnam	54	46	62
Fayette	9	14	23	Rhea	17	13	18
Fentress	8	14	15	Roane	71	82	88
Franklin	202	214	240	Robertson	104	124	145
Gibson	75	77	72	Rutherford	5,286	5,343	5,488
Giles	102	114	99	Scott	5	4	4
Grainger	3	1	1	Sequatchie	16	11	11
Greene	16	27	21	Sevier	41	38	33
Grundy	43	52	60	Shelby	520	574	696
Hamblen	26	29	34	Smith	71	85	95
Hamilton	369	404	453	Stewart	9	6	3
Hancock	2	0	0	Sullivan	61	71	86
Hardeman	40	41	42	Sumner	613	669	737
Hardin	31	40	43	Tipton	21	21	23
Hawkins	17	23	22	Trousdale	21	21	26
Haywood	16	26	21	Unicoi	3	3	2
Henderson	19	21	35	Union	3	0	0
Henry	19	24	31	Van Buren	9	10	9
Hickman	56	57	49	Warren	197	231	229
Houston	4	7	8	Washington	29	29	39
Humphreys	63	50	40	Wayne	23	41	46
Jackson	7	11	16	Weakley	15	18	23
Jefferson	26	23	25	White	26	25	25
Johnson	1	0	1	Williamson	1,354	1,415	1,519
Knox	190	238	306	Wilson	787	863	919
Lake	3	1	1				
				TOTAL	17,485	18,345	19,402

Source: MTSU Institutional Research

Enrollment by Tennessee County Map



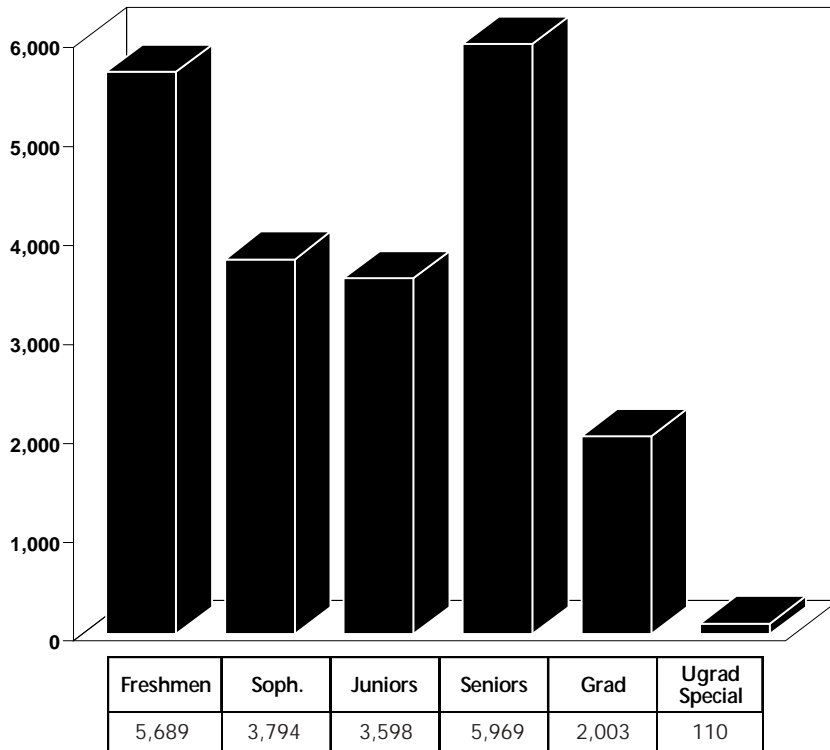
Enrollment



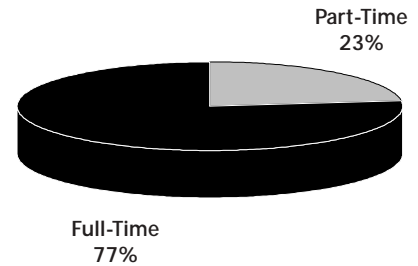
Snapshot of Fall 2002 Student Body	22
Headcount Enrollment	23
Enrollment by Ethnic Group	24
Average Age by Student Level	24
Student Credit Hours/FTE	25
Enrollment: University Comparison	26
Graduation Rates: University Comparison	27

Snapshot of Fall 2002 Student Body

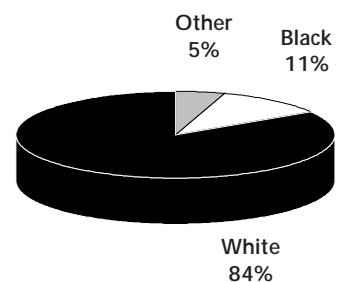
Enrollment by Classification



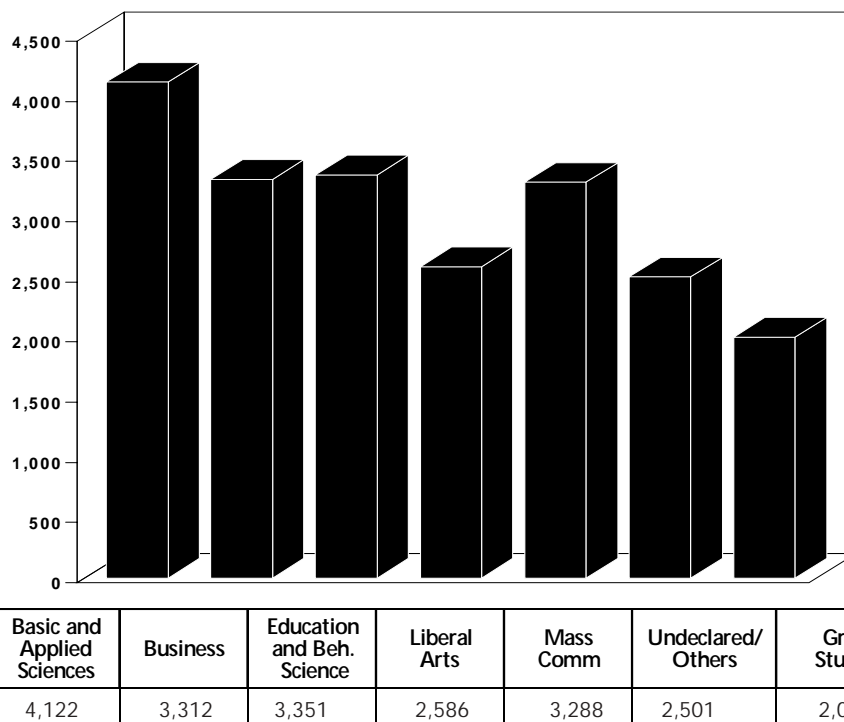
Enrollment by Status



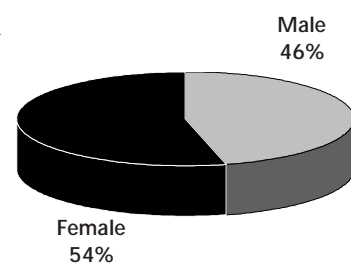
Enrollment by Ethnic Group



Enrollment by College



Enrollment by Gender



Source: MTSU Institutional Research



Headcount Enrollment

Enrollment by Gender Academic Year 2000-2002

Term	Gender	1999-2000	% of Total	2000-2001	% of Total	2001-2002	% of Total
Summer	Male	3,297	41%	3,226	40%	3,461	41%
	Female	4,808	59%	4,882	60%	5,015	59%
	TOTAL	8,105	100%	8,108	100%	8,476	100%
Fall	Male	8,726	46%	8,721	46%	9,160	46%
	Female	10,267	54%	10,400	54%	10,913	54%
	TOTAL	18,993	100%	19,121	100%	20,073	100%
Spring	Male	8,012	46%	8,110	46%	8,582	46%
	Female	9,494	54%	9,549	54%	10,189	54%
	TOTAL	17,506	100%	17,659	100%	18,771	100%

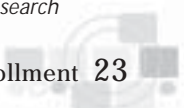
Enrollment by College Fall Terms 2000-2002

College	2000	% of Total	2001	% of Total	2002	% of Total
Basic and Applied Sciences	3,409	18%	3,703	18%	4,122	19%
Business	3,063	16%	3,281	16%	3,312	16%
Education and Beh. Science	3,270	17%	3,269	16%	3,351	16%
Liberal Arts	2,406	13%	2,544	13%	2,586	12%
Mass Communication	2,874	15%	3,022	15%	3,288	16%
Undeclared/Others	2,225	12%	2,311	12%	2,501	12%
Total Undergraduates	17,247	90%	18,130	90%	19,160	91%
Graduate Studies	1,874	10%	1,943	10%	2,003	9%
TOTAL	19,121	100%	20,073	100%	21,163	100%

Enrollment by Classification Fall Terms 2000-2002

Classification	2000	% of Total	2001	% of Total	2002	% of Total
Freshmen	5,031	26.31%	5,405	26.93%	5,689	26.88%
Sophomores	3,374	17.65%	3,555	17.71%	3,794	17.93%
Juniors	3,330	17.42%	3,485	17.36%	3,598	17.00%
Seniors	5,405	28.27%	5,567	27.73%	5,969	28.20%
Undergraduate Special	107	0.56%	118	0.59%	110	0.52%
Graduate Special	170	0.89%	206	1.03%	229	1.08%
Master's	1,553	8.12%	1,564	7.79%	1,596	7.54%
Educational Specialist	49	0.26%	62	0.31%	54	0.26%
Doctoral	102	0.53%	111	0.55%	124	0.59%
TOTAL	19,121	100.00%	20,073	100.00%	21,163	100.00%

Source: MTSU Institutional Research





Enrollment by Ethnic Group

Ethnic Group		Fall 2000	Fall 2001	Fall 2002
Alaskan Native	Enrollment	16	15	7
	% Student Body	0.1%	0.1%	0.0%
	% Yearly Change	-15.8%	-6.3%	-53.3%
Asian	Enrollment	420	471	543
	% Student Body	2.2%	2.3%	2.6%
	% Yearly Change	1.7%	12.1%	15.3%
American Indian	Enrollment	85	83	90
	% Student Body	0.4%	0.4%	0.4%
	% Yearly Change	21.4%	-2.4%	8.4%
Black	Enrollment	2,096	2,215	2,428
	% Student Body	11.0%	11.0%	11.5%
	% Yearly Change	2.0%	5.7%	9.6%
Hispanic	Enrollment	250	288	340
	% Student Body	1.3%	1.4%	1.6%
	% Yearly Change	4.6%	15.2%	18.1%
White	Enrollment	16,190	16,922	17,676
	% Student Body	84.7%	84.3%	83.5%
	% Yearly Change	0.3%	4.5%	4.5%
Unclassified	Enrollment	64	79	79
	% Student Body	0.3%	0.4%	0.4%
	% Yearly Change	33.3%	23.4%	0.0%
TOTAL	Enrollment	19,121	20,073	21,163
	% Yearly Change	0.7%	5.0%	5.4%

Average Age by Student Level

Level	Fall 2000		Fall 2001		Fall 2002	
	Headcount	Avg. Age	Headcount	Avg. Age	Headcount	Avg. Age
First-Time Freshmen	2,830	19	2,904	19	3,136	19
Other Freshmen	2,201	22	2,501	22	2,553	22
Sophomores	3,374	22	3,555	22	3,794	22
Juniors	3,330	23	3,485	23	3,598	23
Seniors	5,405	27	5,567	26	5,969	26
Undergraduate Special	107	30	118	33	110	32
Graduate Special	170	36	206	37	229	37
Master's	1,553	30	1,564	31	1,596	31
Educational Specialist	49	34	62	33	54	35
Doctoral	102	38	111	37	124	39
TOTAL	19,121	24	20,073	24	21,163	24

Source: MTSU Institutional Research



Student Credit Hours/FTE

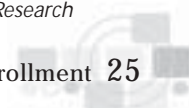
Student Credit Hours by Classification Fall Terms 2000-2002

Level	2000	% of Total	2001	% of Total	2002	% of Total
Freshmen	68,656	28%	73,486	29%	77,645	29%
Sophomores	45,846	19%	48,714	19%	51,746	19%
Juniors	45,884	19%	47,477	19%	49,452	18%
Seniors	69,603	29%	71,947	28%	77,214	29%
Undergraduate Special	578	0.2%	605	0%	592	0%
Graduate Special	812	0.3%	1,041	0%	1,215	0%
Master's	9,995	4.1%	9,757	4%	10,276	4%
Educational Specialist	277	0.1%	312	0%	330	0%
Doctoral	530	0.2%	603	0%	668	0%
TOTAL Student Credit Hours	242,181	100.0%	253,942	100%	269,138	100%

Full-Time Equivalent (FTE) Enrollment by Classification Fall Terms 2000-2002

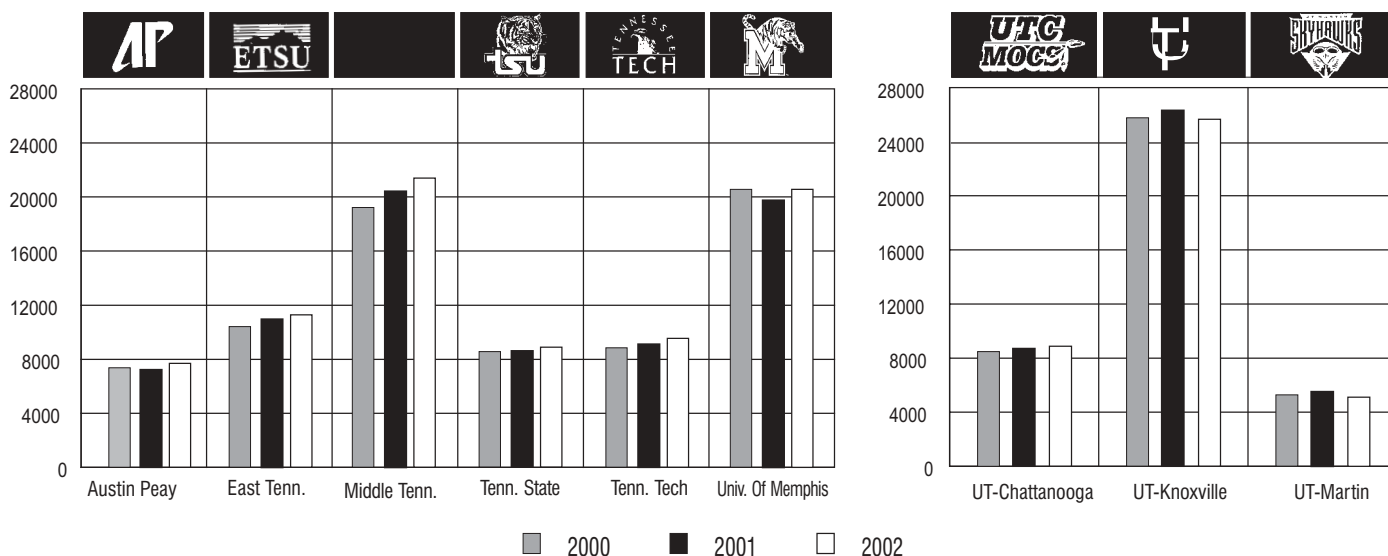
Level	2000	% of Total	2001	% of Total	2002	% of Total
Freshmen	4,577	28%	4,899	29%	5,176	29%
Sophomores	3,056	19%	3,248	19%	3,450	19%
Juniors	3,059	19%	3,165	18%	3,297	18%
Seniors	4,640	28%	4,796	28%	5,148	28%
Undergraduate Special	39	0.2%	40	0%	39	0%
Graduate Special	68	0.4%	87	1%	101	1%
Master's	833	5.1%	813	5%	856	5%
Educational Specialist	23	0.1%	26	0%	28	0%
Doctoral	44	0.3%	50	0%	56	0%
TOTAL Full-Time Equivalent	16,339	100%	17,124	100%	18,151	100%
Full-Time Faculty Headcount	755		763		798	
FTE Ratio	21.6		22.4		22.7	

Source: MTSU Institutional Research





Enrollment: University Comparison



Headcount and FTE Comparison Fall Terms 2000-2002

Institution	HEADCOUNT				FTE			
	2000	2001	2002	2 Years % Chg.	2000	2001	2002	2 Years % Chg.

TENNESSEE BOARD OF REGENTS (TBR) INSTITUTIONS

Austin Peay	7,121	7,033	7,482	5.07%	5,671	5,769	6,079	7.19%
East Tennessee	10,821	11,093	11,131	2.86%	9,402	9,271	9,431	0.31%
Middle Tennessee	19,121	20,073	21,163	10.68%	16,173	17,125	18,151	12.23%
Tennessee State	8,640	8,664	8,881	2.79%	7,629	7,425	7,703	0.97%
Tennessee Tech	8,409	8,653	8,890	5.72%	7,227	7,372	7,554	4.52%
University of Memphis	19,986	20,332	19,797	-0.95%	15,909	15,890	15,696	-1.34%
TOTAL TBR Institutions	74,098	75,848	77,344	4.38%	62,011	62,852	64,614	4.20%

UNIVERSITY OF TENNESSEE INSTITUTIONS:

UT-Chattanooga	8,319	8,485	8,524	2.46%	6,833	6,955	7,050	3.18%
UT-Knoxville	25,890	26,033	25,791	-0.38%	22,957	23,183	23,150	0.84%
UT-Martin	5,877	5,900	5,714	-2.77%	5,333	5,388	5,311	-0.41%
TOTAL UT Institutions	40,086	40,418	40,029	-0.14%	35,123	35,526	35,511	1.10%

Source: Tennessee Higher Education Commission



Graduation Rates: 1997-2001

The graduation rates represent the percent of first-time, full-time freshmen enrolled in a public university in the summer and fall terms of an academic year who subsequently earn a baccalaureate degree at the admitting or another public institution in Tennessee within six years.

Institution	1991-97	1992-98	1993-99	1994-00	1995-01
-------------	---------	---------	---------	---------	---------

TENNESSEE BOARD OF REGENTS (TBR) INSTITUTIONS

Austin Peay	35%	42%	38%	36%	36%
East Tennessee	39%	39%	37%	42%	41%
Middle Tennessee	38%	39%			
Tennessee State	38%				

--	--	--	--	--	--

Academic Degree Programs



Institutional and Professional Accreditation	30
Degree and Major Offerings	32
Degrees Conferred Academic Year 2001-2002	35
Degrees Conferred Historical Trends	36
Degrees Conferred University Comparison	39



Institutional and Professional Accreditation

Institutional Accreditation

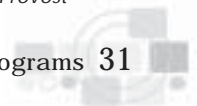
Middle Tennessee State University is accredited by the Commission on Colleges of the Southern Association of Colleges and Schools to award Associate's, Bachelor's, Master's, Specialist's, and Doctorate degrees.

Accrediting Agency	Major	Degree(s) Offered
Accrediting Council on Education in Journalism and Mass Communications (www.ukans.edu/~acejmc)	Mass Communication	B.S., M.S.
AACSB International - The Association to Advance Collegiate Schools of Business (www.aacsb.edu)	Accounting Actg. and Info. Systems Business Administration Economics Entrepreneurship Finance Information Systems Management Marketing Office Management	B.B.A. M.S. B.B.A., M.B.A. B.B.A. B.B.A. B.B.A. B.B.A. B.B.A. B.B.A. B.B.A.
Accreditation Board for Engineering and Technology (www.abet.org)	Engineering Technology	B.S.
American Association of Family and Consumer Sciences (www.aafcs.org)	Family and Cons. Studies Interior Design Nutrition and Food Sci. Textiles, Mdsg., and Design	B.S. B.S. B.S. B.S.
American Chemical Society (www.acs.org)	Chemistry	B.S.
American Dietetic Association (www.eatright.org)	Nutrition and Food Science	B.S.
Computing Sciences Accreditation Board (www.csab.org)	Computer Science	B.S.
Council for Accreditation of Counseling and Related Educational Programs (www.counseling.org/CACREP)	School Counseling	M.Ed.
Council on Aviation Accreditation (www.caaaccreditation.org)	Aerospace	B.S.
Council on Social Work Education (www.cswe.org)	Social Work	B.S.W.



Accrediting Agency	Major	Degree(s) Offered
Foundation for Interior Design Education Research (www.fider.org)	Interior Design	B.S.
National Association for the Education of the Young Child (www.naeyc.org)	Early Childhood Education	B.S.
National Association of Industrial Technology (www.nait.org)	Industrial Technology	B.S.
National Association of School Psychologists (www.nasponline.org)	Curriculum and Instruction	Ed.S.
National Association of Schools of Music (www.arts-accredit.org/nasm)	Music	B.M., M.A.
National Council for Accreditation of Teacher Education (www.ncate.org)	Administration and Supervision Aerospace Education Art Education Biology Business Education Curriculum and Instruction Early Childhood Education Foreign Languages Health Education Industrial Education Interdisciplinary Studies Marketing Education Mathematics Physical Education Reading School Counseling Science Special Education Vocational-Technical Education	M.Ed., Ed.S. M.Ed. B.S. M.S.T. B.S., M.B.E. M.Ed., Ed.S. B.S. M.A.T. B.S. B.S. B.S. B.S. M.S.T. B.S. M.Ed. M.Ed. B.S. B.S., M.Ed. M.V.T.E.
National League for Nursing (www.nln.org)	Nursing	B.S.N.
National Recreation and Park Association (www.activeparks.org)	Recreation and Leisure Services	B.S.

Source: MTSU Executive Vice President and Provost





Degree and Major Offerings

Middle Tennessee State University has been authorized to grant the following degrees:

Undergraduate

Associate in Applied Science in Law Enforcement (A.A.S.)
 Bachelor of Arts (B.A.)
 Bachelor of Business Administration (B.B.A.)
 Bachelor of Fine Arts (B.F.A.)
 Bachelor of Music (B.M.)
 Bachelor of Science (B.S.)
 Bachelor of Science in Nursing (B.S.N.)
 Bachelor of Social Work (B.S.W.)
 Bachelor of University Studies (B.Unv.S.)

Graduate

Master of Arts (M.A.)
 Master of Arts in Teaching (M.A.T.)
 Master of Business Administration (M.B.A.)
 Master of Business Education (M.B.E.)
 Master of Criminal Justice (M.C.J.)
 Master of Education (M.Ed.)
 Master of Science (M.S.)
 Master of Science in Teaching (M.S.T.)
 Master of Vocational-Technical Education (M.V.T.E.)
 Specialist in Education (Ed.S.)
 Doctor of Arts (D.A.)
 Doctor of Philosophy (Ph.D.)

On the following pages is a summary of the degrees offered in each department or school.

Department/School	Major	Degree(s) Offered
COLLEGE OF BASIC AND APPLIED SCIENCES		
Aerospace	Aerospace	B.S.
	Aerospace Education	M.Ed.
	Aviation Administration	M.S.
Agribusiness and Agriscience	Agribusiness	B.S.
	Animal Science	B.S.
	Plant and Soil Science	B.S.
Biology	Biology	B.S.; M.S.; M.S.T.
Chemistry	Chemistry	B.S.; M.S.; D.A.
	Science	B.S.
Computer Science	Computer Science	B.S.; M.S.
Engineering Technology and Industrial Studies	Engineering Technology	B.S.
	Environmental Sci. and Tech.	B.S.
	Industrial Education	B.S.
	Industrial Technology	B.S.
	Industrial Studies	M.S.
	Vocational-Technical Educ.	M.V.T.E.
Mathematical Sciences	Mathematics	B.A.; B.S.; M.S.; M.S.T.
Nursing	Nursing	B.S.N.
	Critical Care Nursing	Grad. Cert.
Physics and Astronomy	Physics	B.S.
	University Studies	B.Unv.S.



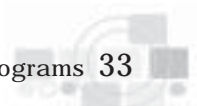
Department/School	Major	Degree(s) Offered
-------------------	-------	-------------------

JENNINGS A. JONES COLLEGE OF BUSINESS

Accounting	Accounting Actg./Infs.	B.B.A. M.S.
Business Education, Marketing Education, and Office Management	Business Education Entrepreneurship Marketing Education Office Management Administrative Business	B.S.; M.B.E. B.B.A. B.S. B.B.A. 2-yr. Certificate
Computer Information Systems	Information Systems Actg./Infs.	B.B.A. M.S.
Economics and Finance	Economics Finance	B.B.A.; B.S.; M.A.; Ph.D. B.B.A.
Management and Marketing	Business Administration Management Marketing	B.B.A.; M.B.A. B.B.A. B.B.A.

COLLEGE OF EDUCATION AND BEHAVIORAL SCIENCE

Criminal Justice Administration	Criminal Justice Adm. Law Enforcement	B.S.; M.C.J. A.A.S.
Educational Leadership	Admin. and Supervision Curriculum and Instruction	M.Ed.; Ed.S. M.Ed.; Ed.S.
Elementary and Special Education	Interdisciplinary Studies Special Education Reading Curriculum and Instruction	B.S. B.S., M.Ed. M.Ed. M.Ed., Ed.S.
Health, Physical Education, Recreation, and Safety	Athletic Training Health Education Physical Education Human Performance Recreation and Leisure Services Exercise Science and Health Promotion Health, Physical Educ., Recreation	B.S. B.S. B.S. Ph.D. B.S. M.S. M.S.
Human Sciences	Early Childhood Education Fam. and Con. Studies Interior Design Nutrition and Food Science Textiles, Merchandising, and Design Human Sciences	B.S. B.S. B.S. B.S. B.S. M.S.
Psychology	Psychology Industrial/Organizational School Counseling Curriculum and Instruction	B.S., M.A. B.S. M.Ed. Ed.S.



Department/School	Major	Degree(s) Offered
COLLEGE OF LIBERAL ARTS		
Art	Art Art Education	B.F.A. B.S.; Grad. Cert.
English	English	B.A.; M.A.; Ph.D.
Foreign Languages and Literatures	Foreign Languages	B.A.; B.S.; M.A.T.
Geosciences	Geoscience	B.S.; Grad. Cert.
History	History	B.A.; M.A.; D.A.
Music	Music	B.M; M.A.
Philosophy	Philosophy	B.A.
Political Science	Political Science International Relations	B.A.; B.S. B.S.
Social Work	Social Work	B.S.W.
Sociology and Anthropology	Sociology Anthropology	B.A.; B.S.; M.A. B.A.; B.S.
Speech and Theatre	Speech and Theatre Organizational Communication	B.A.; B.S. B.A.
	University Studies	B.Unv.S.

COLLEGE OF MASS COMMUNICATION

College of Mass Communication	Mass Communication	M.S.
Electronic Media Communication	Mass Communication	B.S.
Journalism	Mass Communication	B.S.
Recording Industry	Recording Industry	B.S.

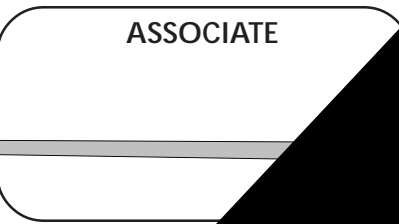
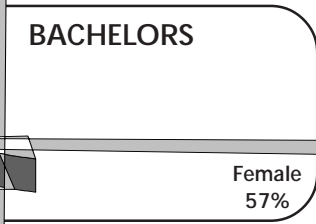
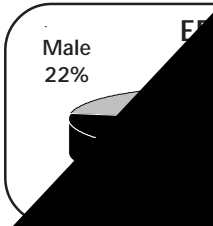
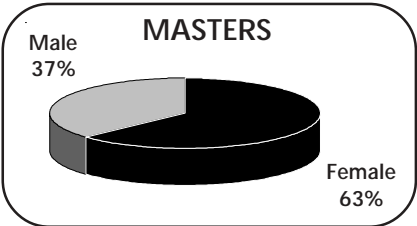
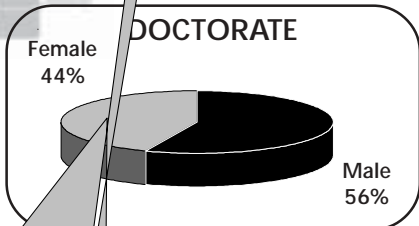
COLLEGE OF GRADUATE STUDIES

	Gerontology	Grad. Cert.
	Health Care Management	Grad. Cert.

REGENTS ONLINE DEGREE PROGRAM

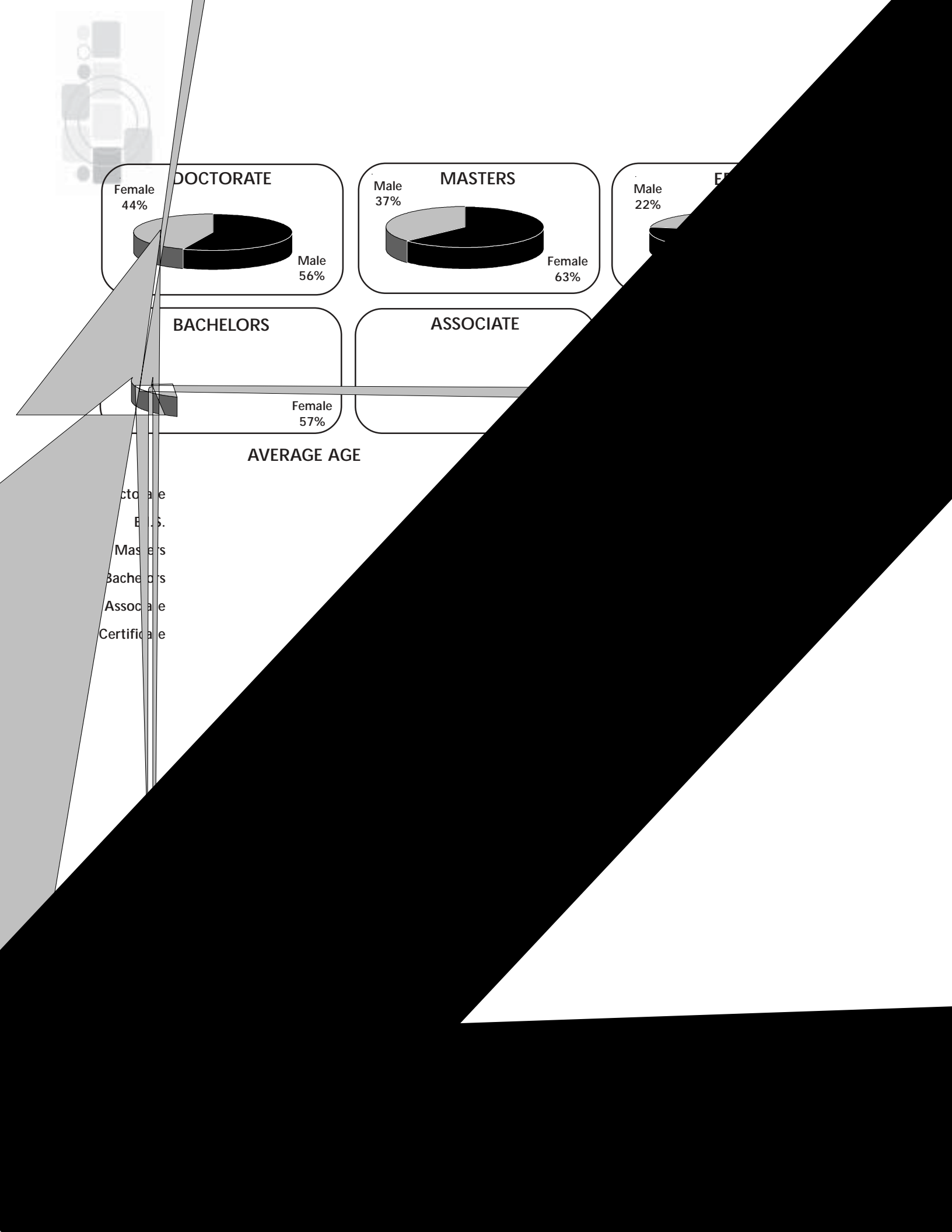
	Interdisciplinary Studies	B.S.
	Professional Studies	B.S.

*Source: MTSU Undergraduate
and Graduate Catalogs*



AVERAGE AGE

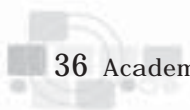
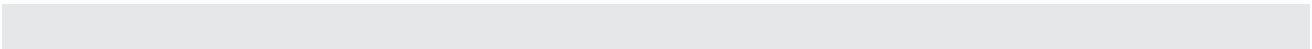
Doctorate
Emphatic
Masters
Bachelors
Associate
Certificate





Degrees Conferred by College - Academic Years 1997-2002

College of Graduate Studies	1997-98	1998-99	1999-00	2000-01	2001-02
Doctor of Arts, Chemistry	1	3	2	1	2
Doctor of Arts, Economics	2	2	0	1	2
Doctor of Arts, English	3	1	2	5	8
Doctor of Arts, History	2	1	1	0	1
Doctor of Arts, Physical Education	2	5	2	9	12
Educ. Specialist, Administration and Supervision	17	15	13	12	8
Educ. Specialist, Curriculum and Instruction	7	11	14	21	15
Master of Arts, Economics	3	11	4	4	2
Master of Arts, English	13	16	12	12	11
Master of Arts, History	10	19	17	18	15
Master of Arts, Music	11	10	5	11	4
Master of Arts, Psychology	45	38	43	37	35
Master of Arts, Sociology	8	9	0	5	1
Master of Arts in Teaching, Foreign Languages	7	2	7	6	4
Master of Business Administration	82	83	93	99	87
Master of Business Education	7	9	12	4	18
Masteness EducualRst,154d(ea99-0405-4191.63-5431.343)-5102.8(2)-4525.8(7)-8435.4(6)-8					



Bachelor of Science, Plant and Soil Science	27	26	24	23	20
Bachelor of Science, Science	9	9	9	9	8
Bachelor of University Studies	7	9	12	15	19
COLLEGE TOTAL	461	383	436	447	439
Jennings A. Jones College of Business	1997-98	1998-99	1999-00	2000-01	2001-02
Bachelor of Science, Business Education	17	10	9	22	14
Bachelor of Science, Entrepreneurship	0	0	0	0	1
Bachelor of Science, Marketing Education	2	0	3	2	1
Bachelor of Business Administration, Accounting	76	70	88	85	74
Bachelor of Business Administration, Business Admin.	50	51	64	52	69
Bachelor of Business Administration, Economics	5	4	7	7	9
Bachelor of Business Administration, Finance	79	66	80	77	90
Bachelor of Business Administration, Information Systems	43	69	73	93	87
Bachelor of Business Administration, Management	56	56	51	66	73
Bachelor of Business Administration, Marketing	82	62	83	88	108
Bachelor of Business Administration, Office Management	11	11	9	23	12
Certificate, Administrative Business	3	0	3	3	1
Certificate, Stenographic Business	4	4	0	0	0
COLLEGE TOTAL	428	403	470	518	539
College of Education and Behavioral Science	1997-98	1998-99	1999-00	2000-01	2001-02
Bachelor of Arts, Psychology	3	0	0	0	0
Bachelor of Arts, Social Studies	1	0	0	0	5
Bachelor of Science, Athletic Training	0	5	7	7	0
Bachelor of Science, Criminal Justice	89	89	70	77	97
Bachelor of Science, Early Childhood	39	33	37	36	34
Bachelor of Science, Elementary Education	0	0	0	0	0
Bachelor of Science, Family and Consumer Studies	27	31	31	15	30
Bachelor of Science, Fashion Merchandising	0	0	0	1	0
Bachelor of Science, Industrial/Organizational Psychology	13	15	13	19	15
Bachelor of Science, Health Education	12	19	11	11	7
Bachelor of Science, Interdisciplinary Studies	226	222	242	244	180
Bachelor of Science, Interior Design	7	13	11	24	21
Bachelor of Science, Nutrition and Food Science	29	24	14	16	7
Bachelor of Science, Physical Education	74	60	63	65	68
Bachelor of Science, Psychology	122	120	121	117	110
Bachelor of Science, Recreation and Leisure Services	18	27	27	34	33
Bachelor of Science, Social Studies	8	9	6	2	0
Bachelor of Science, Special Education	26	22	29	21	16
Bachelor of Science, Textile Merchandising and Design	22	20	21	21	21
Associate in Applied Science, Law Enforcement	9	4	4	5	7
COLLEGE TOTAL	725	713	707	715	651
College of Liberal Arts	1997-98	1998-99	1999-00	2000-01	2001-02
Bachelor of Arts, English	49	50	57	62	59
Bachelor of Arts, Foreign Languages	14	12	13	17	14
Bachelor of Arts, History	25	20	34	30	32
Bachelor of Arts, International Relations	2	1	0	0	0
Bachelor of Arts, Philosophy	2	2	3	1	7
Bachelor of Arts, Political Science	5	5	4	8	10
Bachelor of Arts, Sociology	6	4	3	1	1
Bachelor of Arts, Speech and Theatre	2	2	4	3	4
Bachelor of Fine Arts	35	38	29	32	31
Bachelor of Science, Anthropology	10	18	17	22	15
Bachelor of Science, Art Education	10	11	5	10	8
Bachelor of Science, Economics	4	2	7	3	6
Bachelor of Science, Foreign Languages	1	1	1	3	1

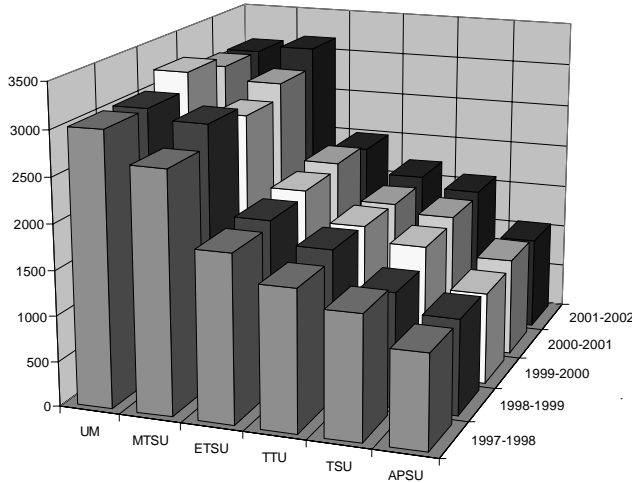
Bachelor of Science, Geoscience	23	15	15	12	6
Bachelor of Science, International Relations	11	9	13	5	21
Bachelor of Science, Organizational Communication	0	0	0	0	4
Bachelor of Science, Philosophy	0	1	1	0	0
Bachelor of Science, Political Science	40	55	52	49	53
Bachelor of Science, Sociology	23	24	25	25	28
Bachelor of Science, Speech and Theatre	43	19	30	29	36
Bachelor of Music	22	20	26	28	19
Bachelor of Social Work	65	62	49	41	59
Bachelor of University Studies	26	30	45	53	91
COLLEGE TOTAL	418	401	433	434	505
College of Mass Communication	1997-98	1998-99	1999-00	2000-01	2001-02
Bachelor of Science, Mass Communication	202	218	191	219	260
Bachelor of Science, Recording Industry	172	160	197	192	214
COLLEGE TOTAL	374	378	388	411	474
Regents Online Degree Program	1997-98	1998-99	1999-00	2000-01	2001-02
Liberal Studies (BS)	0	0	0	0	15
UNIVERSITY TOTAL	2,909	2,779	2,945	3,092	3,167

Source: MTSU Institutional Research

Degrees Conferred: University Comparison

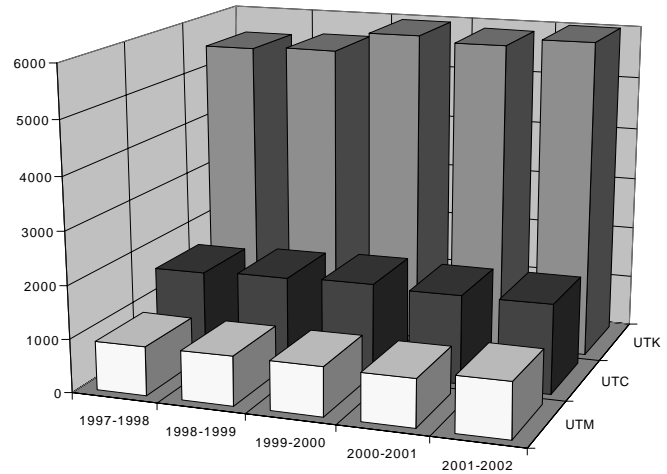
Degrees Conferred Growth Comparison - Academic Years 1997-2002

TENNESSEE BOARD OF REGENTS INSTITUTIONS



- APSU - Austin Peay State University
- ETSU - East Tennessee State University
- MTSU - Middle Tennessee State University
- TSU - Tennessee State University
- TTU - Tennessee Technological University
- UM - University of Memphis
- UTC - University of Tennessee at Chattanooga
- UTK - University of Tennessee at Knoxville
- UTM - University of Tennessee at Martin


UNIVERSITY OF TENNESSEE INSTITUTIONS



Institution	1997-1998	1998-1999	1999-2000	2000-2001	2001-2002	% 5 yrs. Chg
Tennessee Board of Regents Institutions:						
Austin Peay	1,064	1,020	1,100	1,040	1,046	-1.7%
East Tennessee	1,919	1,984	2,053	2,018	1,990	3.7%
Middle Tennessee	2,909	2,779	2,945	3,092	3,167	8.9%
Tennessee State	1,272	1,475	1,540	1,593	1,576	23.9%
Tennessee Tech	1,665	1,643	1,627	1,689	1,701	2.2%
University of Memphis	3,019	3,025	3,225	3,095	3,091	2.4%
TOTAL TBR INSTITUTIONS	11,848	11,926	12,490	12,527	12,571	6.1%
University of Tennessee Institutions:						
UT-Chattanooga	1,636	1,693	1,738	1,690	1,690	3.3%
UT-Knoxville	5,519	5,566	5,946	5,849	5,994	8.6%
UT- Martin	917	929	927	900	1,040	13.4%
TOTAL UT INSTITUTIONS	8,072	8,188	8,611	8,439	8,724	8.1%

Source: Tennessee Higher Education Commission

Budget and Financial Information



Unrestricted Educational and
General Revenues by Source

72

Unrestricted Educational and
General Expenditures

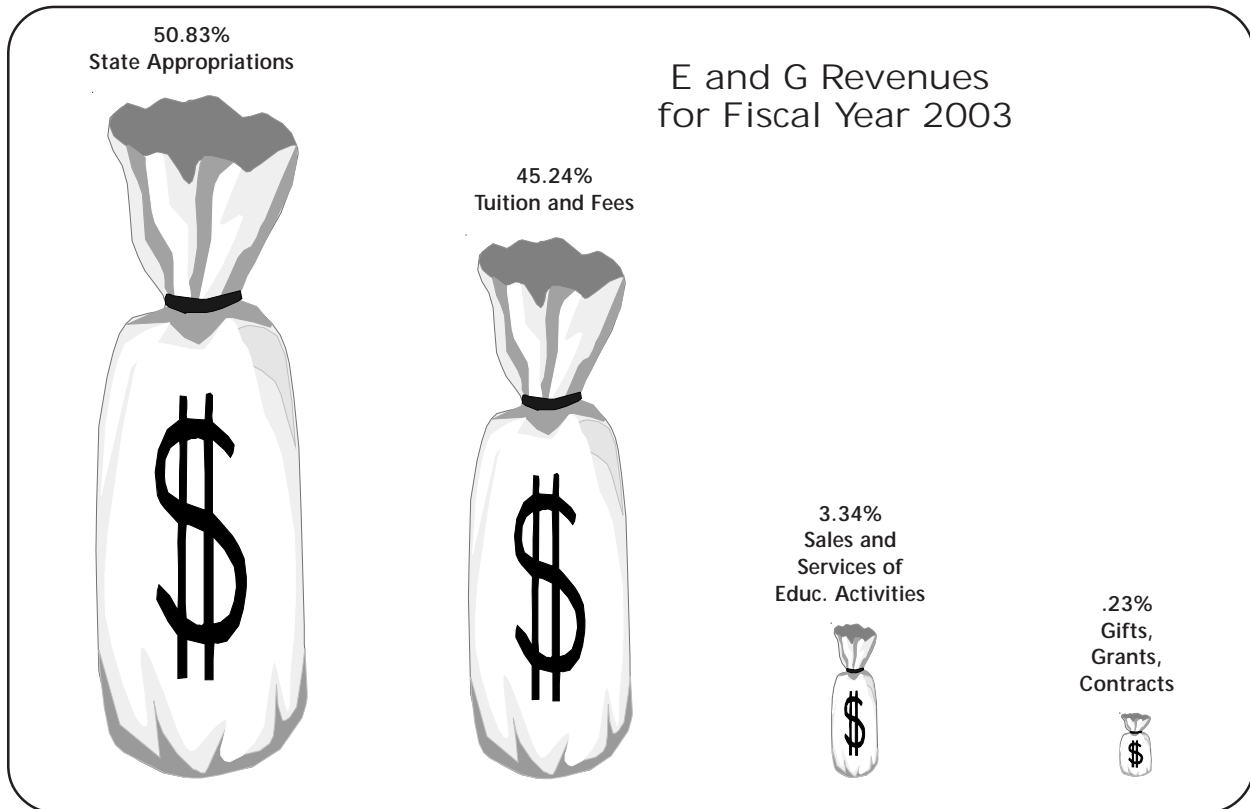
73

Tuition and Fees

74



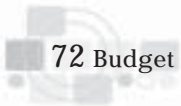
Unrestricted Educational and General Revenues by Source



Category	2000-2001		2001-2002		2002-2003	
	Amount	% of Total	Amount	% of Total	Amount	% of Total
Tuition and Fees	\$ 52,723,700	40.54%	\$ 58,843,400	42.25%	\$ 68,821,700	45.24%
State Appropriations	72,705,700	55.91%	75,560,600	54.25%	77,327,000	50.83%
Federal Grants and Contracts	135,000		210,000		210,000	
State Grants and Contracts	125,000		125,000		125,000	
Local Grants and Contracts	3,000		3,000		3,000	
Private Gifts, Grants, and Contracts	0		15,000		15,000	
Total Gifts, Grants, and Contracts	263,000	0.20%	353,000	.25%	353,000	0.23%
Sales and Services of Educ. Dept.	3,443,100	2.65%	3,604,900	2.59%	5,074,800	3.34%
Endowment Income	2,000	0.00%	9,200	0.01%	4,400	0.00%
Other Sources	901,200	0.69%	909,300	0.65%		
TOTAL E AND G REVENUES	\$130,038,700		\$139,280,400		\$152,122,200	

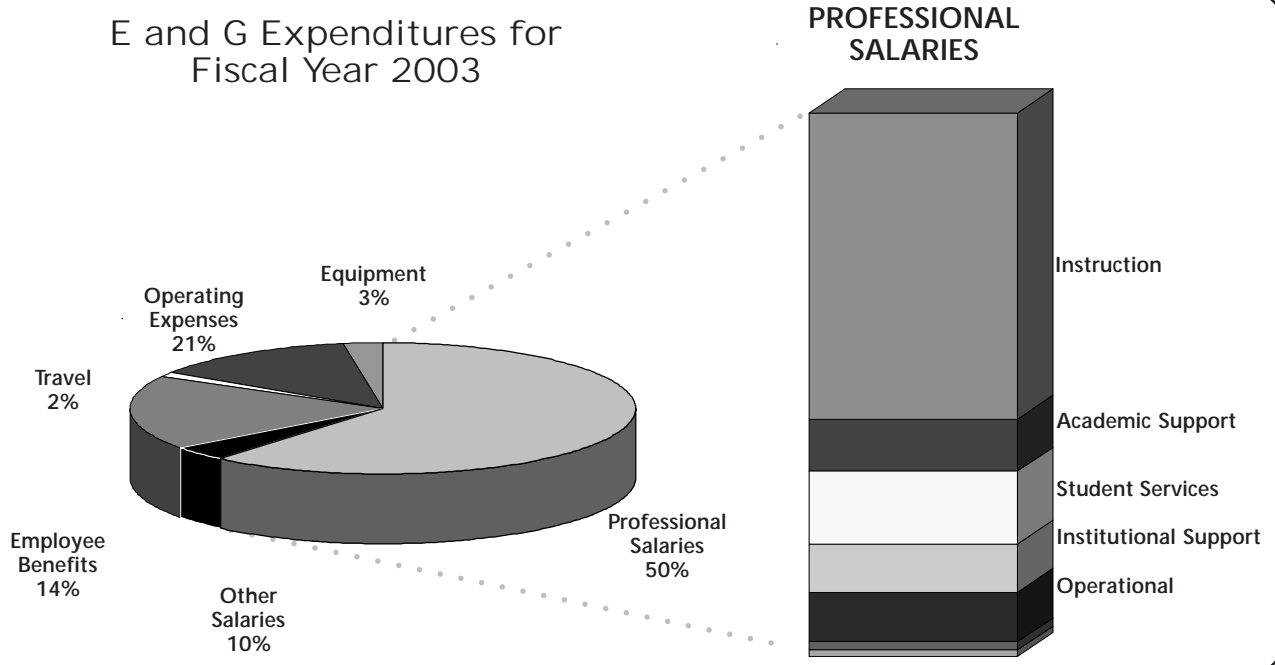
Two-Year Change (2001-2003): \$22,083,500
 % of Two-Year Change (2001-2003): 16.98%

Source: MTSU Budget Office



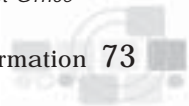


E and G Expenditures for Fiscal Year 2003



	Professional Salaries	Other Salaries	Employee Benefits	Travel	Operating Expenses	Equipment (Capital Outlay)	Total	% of Total E & G
Instruction								
General Academic Instr.								
Basic and Applied Sci.	10,722,094	813,658	2,810,205	124,877	1,647,832	146,948	16,265,614	11.08%
Business	8,428,625	235,544	1,915,700	47,861	535,155	47,200	11,210,085	7.63%
Education	8,919,503	448,529	2,107,000	115,798	605,838	40,352	12,237,020	8.33%
Liberal Arts	12,610,125	595,866	3,180,729	156,551	838,576	31,251	17,413,098	11.86%
Mass Communication	3,465,298	187,412	866,600	41,004	391,347	57,071	5,008,732	3.41%
University Honors College	14,100	0	3,700	0	10,415	0	28,215	—
Other Gen. Acad. Instr.	8,686,005	221,106	937,315	61,431	3,904,630	1,000,000	14,810,487	10.09%
Total Gen. Academic Instr.	52,845,750	2,502,115	11,821,249	547,522	7,933,793	1,322,822	76,973,251	52.42%
Community Education	303,541	105,965	73,153	15,000	528,668	14,430	1,040,757	0.71%
Preparatory Rem. Instr.	1,259,511	123,542	339,100	16,000	129,839	30,000	1,897,992	1.29%
TOTAL INSTRUCTION	54,408,802	2,731,622	12,233,502	578,522	8,592,300	1,367,252	79,912,000	54.42%
Research	945,743	145,634	233,769	43,441	676,599	77,814	2,123,000	1.45%
Public Service	664,040	201,093	283,011	42,909	382,915	39,932	1,613,900	1.10%
Academic Support	5,785,262	2,605,074	2,095,700	139,001	263,099	2,765,764	13,653,900	9.30%
Student Services	5,764,716	2,413,874	2,180,245	1,679,949	6,933,099	75,617	19,047,500	12.97%
Institutional Support	4,581,528	3,369,494	2,019,223	170,756	2,285,686	172,513	12,599,200	8.58%
Oper. and Maint. of Plant	1,532,661	3,759,601	1,542,100	25,145	6,007,956	65,837	11,877,260	7.47%

Source: MTSU Budget Office





Tuition and Fees

Tuition and Other Fees Per Semester - Fall Terms 2001 and 2002

	Part-Time Per Hour				Full-Time ⁽¹⁾ Maximum				
	2001-02	2002-03	% Chg	# Chg	2001-02	2002-03	% Chg	# Chg	
Student Registration Fees									
In-State Resident									
Undergraduate	106	120	13%	14	1,278	1,374	8%	96	
Graduate	191	194	2%	3	1,716	1,845	8%	129	
Out-of-State Resident									
Undergraduate	376	421	12%	45	4,514	4,853	8%	339	
Graduate	461	495	7%	34	4,952	5,324	8%	372	
Debt Services Fee ⁽²⁾	Required of all students								
	7	7	0%	0	83	83	0%	0	
Rec. Activity Fee ⁽³⁾	Req. for all full-time students								
					15	25	67%	10	
Postal Services Fee	Req. for all full-time students								
					8	8	0%	0	
Student Gov. Assoc. ⁽⁴⁾	Req. for all students with 7 hours or more								
					20	20	0%	0	
General Access Fee ⁽⁵⁾	Req. for all students								
	\$23+\$14/hr.	\$23+\$16/hr.			193	211	9%	18	

	2001-02	2002-03	% Chg	# Chg
	Undergraduate	Undergraduate		
In-state students - not living in a dorm	1,597	1,721	8%	124
In-state students living in a dorm (no meal plan)	2,667	2,846	7%	179
In-state freshmen living in a dorm (includes meal plan)	3,497	3,836	10%	339
Out-of-state students - not living a dorm	4,833	5,200	8%	367
Out-of-state students living in a dorm (no meal plan)	5,903	6,325	7%	422
Out-of-state freshmen living in a dorm (includes meal plan)	6,733	7,315	9%	582
	2001-02	2002-03	% Chg	# Chg
	Graduate	Graduate		
In-state students - not living in a dorm	2,035	2,192	8%	157
In-state students living in a dorm (no meal plan)	3,105	3,317	7%	212
In-state freshmen living in a dorm (includes meal plan)				
Out-of-state students - not living a dorm	5,271	5,671	8%	400
Out-of-state students living in a dorm (no meal plan)	6,341	6,796	7%	455

(1) Undergraduate full-time course load is 12 hours or more.

Graduate full-time course load is 10 hours or more.

(2) Funds are used for Student Recreation Center, renovating the University Center, James Union Building, and Murphy Athletic Center.

(3) Funds are used to support the on-going management of the Recreation Center.

(4) Supports activities by the Student Government Association (SGA).

(5) The General Access Fee replaces the Technology Fee and Student Activity Fee.

Source: MTSU Business Office



Resources, Services, and Facilities



MTSU Foundation	76
James E. Walker Library	77
Continuing Studies and Public Service	78
Physical Facilities Inventory	80
Campus Map	inside back cover



MTSU Foundation

MTSU Foundation Total Assets by Fund (For the Year Ended June 30, 1998 to June 30, 2002)

	1998	1999	2000	2001	2002
Unrestricted	1,145,493	1,165,038	1,276,621	622,195	609,096
Restricted	8,027,786	15,756,086	17,264,217	18,742,559	30,077,258
Endowment	14,082,755	15,525,176	17,345,299	18,834,440	18,790,904
TOTAL	23,256,034	32,446,300	35,886,137	38,199,194	49,477,258

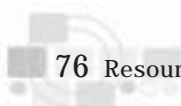
\$ of Five-Year Change: \$26,221,224
 % of Five-Year Change: 113%

MTSU Foundation Revenues (For the Year Ended June 30, 1998 to June 30, 2002)

	1998	1999	2000	2001	2002
Revenues					
Cash Contributions	3,467,702	4,369,146	5,034,335	4,397,641	14,993,569
Pledges		2,941,362	510,696		91,647
Federal Grants		135,000	58,939	20,972	1,461,377
Investment Income	871,949	1,014,081	1,221,475	1,672,964	869,383
Investment Gains (Net)	735,823	751,966	119,905	387,611	
Unrealized Gain in Market Value	197,582				
TOTAL Revenues	5,273,056	9,211,555	6,945,350	6,479,188	17,415,976
Other Additions					
In-Kind Gifts	76,195	165,752	88,979	53,505	236,897
Livestock Gifts	25,661	413,625	193,748	264,978	
Real Estate Gifts		53,800		5,121	
Stock Gifts	444,002	372,844	166,093	27,956	2,075,767
Donations of Equipment	34,767	50,912			10,000
Buildings		524,256	320,526	230,175	11,696,093
Unrealized Gain in Market Value			340,154	29,809	
Livestock Purchases			2,990		
Equipment Purchases		19,642	29,015	7,000	5,900
Gain on Sales of Stock Gifts		464	4,169	132,632	
Other	2,476,308	5,399	7,518	1,500	173,205
TOTAL Other Additions	3,056,933	1,606,694	1,153,192	752,676	14,197,862
TOTAL Revenues & Other Additions	8,329,989	10,818,249	8,098,542	7,231,864	31,613,838

\$ of Five-Year Change: \$23,283,849
 % of Five-Year Change: 280%

Source: MTSU Foundation Financial Reports



James E. Walker Library

In 1912, the first library for Middle Tennessee State Normal School was established by newly hired librarian Betty Avent Murfree. She started the collection with donations of 75 books from persons both on and off campus. The library was housed on the third floor of Old Main overlooking the main entrance, its collection eventually grew to 2,000 volumes. By 1925, a separate library building was needed for the newly named Middle Tennessee State Teachers College. Designed to accommodate 20,000 volumes, the structure was erected across from Old Main on the site where Peck Hall now stands. In 1958, a new library building was constructed at a cost of \$500,000. Located east of the older library and between the Science Building and Jones Hall, this new building was to hold a growing collection of up to 150,000 volumes. It was named the Andrew L. Todd Library. In 1970, an addition to Todd Library was required to meet the needs of a growing university. While this building was designed to contain 225,000 volumes, over 600,000 volumes filled its shelves.



In the Spring of 1999, MTSU again opened a new library to meet the needs of a rapidly growing student body. It accommodates a collection of 800,000 volumes and provides seating for 2,600. The library includes a four-floor atrium that serves as the central organizing element for the interior spaces and which brings controlled natural daylight to the reader and study spaces within the building. In the Fall of 2001, the new library was named the James E. Walker Library, honoring a former MTSU president.

The building infrastructure includes an extensive electronic information distribution system that is connected to the campus-wide, fiber optic backbone. Library instruction rooms are equipped to support state-of-the-art multimedia instruction techniques in accessing and retrieving electronic information resources.

Holdings for Academic Years 1997-1998 to 2001-2002

	1997-1998	1998-1999	1999-2000	2000-2001	2001-2002
Bound Volumes	638,460	644,748	653,010	673,162	687,649
Periodical Subscriptions	3,447	3,447	3,447	3,567	3,611
Microtext Units ⁽¹⁾	1,206,859	1,225,687	1,235,282	1,255,430	1,268,367
TOTAL	1,848,766	1,873,882	1,891,739	1,932,159	1,959,627

Operating Expenditures for Academic Years 1997-1998 to 2001-2002

	1997-1998	1998-1999	1999-2000	2000-2001	2001-2002
Staff Salaries and Wages ⁽²⁾	2,153,113	2,329,193	2,515,183	2,623,249	2,713,175
Collection Expenditures ⁽³⁾	1,489,945	1,394,706	1,804,889	2,254,729	2,428,484
Other Operating Expenditures ⁽⁴⁾	424,178	410,011	378,974	370,992	330,406
TOTAL	4,067,236	4,133,910	4,699,046	5,248,970	5,472,065

(1) Includes microfilm and microfiche

(2) Administrative Salaries, Instructional Salaries, Clerical Salaries, CWSP Match, Work Scholarship, and Staff Benefits

(3) Books, Periodicals, and Binding

(4) Travel, Equipment, and Supplies



Continuing Studies and Public Service

The mission of the Division of Continuing Studies and Public Service is to extend resources of the University through partnerships, outreach, and distance learning to provide high quality educational opportunities for lifelong learning. The Division plays an integral role in meeting the goals of the University by offering academic, personal enrichment, and professional programs.

To achieve its goals the Division is divided into two main areas—credit and noncredit. The credit area coordinates distance learning, off-campus courses, summer school, evening classes, advising for the Bachelor of University Studies degree, and the Regents Online Degree Program. The noncredit area caters to professionals interested in updating skills and groups or organizations desiring some type of educational experience.

Credit Area

Distance Learning Courses

Distance learning courses include courses via video conferencing, telecourses, correspondence, and online courses. Video conferencing technology allows courses to be instructed at one site while being received simultaneously at multiple sites. Telecourses are courses offered via cable television or videotape. Correspondence courses involve individual, independent instruction of a student by an instructor on a one-to-one basis. Online courses are accessed over the Internet through e-mail, newsgroups, distribution lists, and the World Wide Web. More information about distance learning courses is available by calling (615) 898-5611.

	1999-2000	2000-2001	2001-2002
Videoconferencing Courses*	319	322	253
Telecourses	762	960	624
Correspondence Courses	1,252	1,953	3,040
Online Courses	340	572	1,659

* Includes on-campus students in videoconferencing courses.

Evening School

The Division of Continuing Studies and Public Service serves the working adult and part-time student that attend at night by acting as liaison between the student and other offices on campus. The evening school telephone number is (615) 898-5611 and is located in Peck Hall, Room 101D.

Off-Campus Program

Credit courses are scheduled at several locations in middle Tennessee including businesses and community colleges. Efforts are made to service any special request for credit courses by groups, school systems, and agencies.

	1999-2000	2000-2001	2001-2002
Off-Campus Enrollment	1,590	1,589	1,672

Summer School

The Division of Continuing Studies and Public Service directs the summer school, which offers a substantial number of credit courses of interest to residents.

	Summer 2000	Summer 2001	Summer 2002
Summer Enrollment	8,108	8,476	9,025



Bachelor of University Studies

The Division of Continuing Studies and Public Service advises students enrolled in the Bachelor of University Studies (B.Unv.S.) degree program. This degree provides an alternative four-year degree program for mature adult students who choose to pursue a broad-based educational experience rather than a discipline specific program.

	1999-2000	2000-2001	2001-2002
Degrees Awarded	57	54	109

Regents Online Degree Program

Middle Tennessee State University and each of the colleges and universities in the Tennessee Board of Regents system are working cooperatively to allow students to earn college degrees entirely online. The joint program is called the Regents Online Degree Program (RODP).

The online program currently includes a Bachelor of Science degree with a major in Liberal Studies or a Bachelor of Science degree with a major in Professional Studies and concentrations in Information Technology and Organization Leadership. For more information regarding the RODP, please refer to the Regents Web site at www.tn.regentsdegrees.org or call (615) 898-5611.

	Fall 2001	Spring 2002	Fall 2002
Enrollment	56	124	198

Non-Credit Area

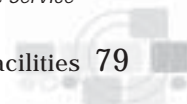
Courses, Seminars, and Conferences

The noncredit area assists groups and individuals in the planning, advertising, coordinating, and delivery of courses, seminars, and conferences. Various noncredit courses are offered each semester as well as upon demand. They are intended to serve business, industry, government, education, professional organizations, and civic and service groups. A current course catalog is available by calling (615) 898-2462.

	1999-2000	2000-2001	2001-2002
Number of Programs	197	257	301
Number of Students	5,200	6,000	6,900

Workforce Development and Corporate Training

The noncredit area offers various human resource services for business, industry, and government, including customized on-site training, needs assessments, and specialized workforce analysis. Professional development certification programs, seminars, workshops, and short courses that focus on timely and leading-edge topics are presented on and off campus. Inquiries should be made to the director of Lifelong Learning at (615) 898-2462.



Physical Facilities Inventory

FACILITY	Building Abbreviation	Year	Gross Sq. Ft. Completed	Initial Cost	Replacement Cost
LEASED FACILITY					
Airport	AIR	1980	6,000	Leased	0
Off-Campus Warehouse	OWH	1970	20,750		1,660,000
Parking Office Modular	PKM	1997	1,640		
PERMANENT FACILITY					
Abernathy Hall	ABER	1973	51,700	1,150,000	4,653,000
Airway Science	AWS	1989	18,625	856,044	1,490,000
Alpha Gamma Rho House	AGRH	1998	7,600	853,750	570,000
Alumni Center	ALUM	1911	8,792	395,246	703,360
Alumni Memorial Gym	AMG	1950	73,257	3,048,187	5,861,280
Art Barn Annex	ABA	1976	4,305	120,000	460,635
Art Lab	AL	1978	1,456	56,036	155,792
Beasley Hall	BH	1959	19,744	1,269,730	1,663,200
Beta Theta Pi House	BTPH	1998	13,010	1,334,004	975,750
Boutwell Dramatic Arts	BDA	1964	55,904	865,000	5,031,360
Business and Aerospace	BAS	1997	184,963	21,540,000	16,624,170
Cason-Kennedy Nursing Building	CKNB	1994	31,085	3,150,000	2,797,650
Tennessee Center for the Study and Treatment of Dyslexia	DSY	2000	7,169	1,500,000	564,480
Central Services Building (Day Care Center)	CSB	1968	6,107	82,017	549,630
Central Utility Plant/Chilling Plant	CUP	1967	6,188	892,816	1,802,700
Central Utility Plant/Cogen. Plant	COGN	1998	15,205	9,409,000	1,216,400
Clement Hall	CLH	1965	24,357	342,000	1,868,625
Cope Administration	CAB	1965	48,921	775,000	3,913,680
Corlew Hall	CORL	1967	104,148	1,900,000	7,811,100
Cyber Café at Woodmore	WC	1963	7,430	125,000	643,826
Davis Science Building	DSB	1967	71,632	1,715,000	7,664,624
Deere Hall	DH	1969	37,360	644,085	2,778,750
E.W. Midgett Building	MGB	1911	18,599	240,000	1,663,470
Ellington Human Sciences	EHS	1962	14,848	913,000	1,336,320
Ellington Human Sciences Annex	EHSA	1928	8,494	53,000	764,460
Ezell Hall	EZEL	1973	52,452	1,150,000	4,720,680
Felder Hall	FEH	1964	21,812	320,000	1,635,900
Floyd Stadium	STA	1998	288,838	25,500,000	23,107,040
Forrest Hall	FH	1954	14,160	391,800	1,274,400
Gore Hall	GOH	1965	24,357	342,000	1,868,625
Gracy Hall	GRH	1963	22,104	253,000	1,688,400
Greenhouse	GH	1975	4,716	60,000	188,640
Horticulture Education Center	HC	1997	9,002	500,000	810,180
James Union Building	JUB	1952	59,381	1,776,000	5,349,780
Jean A. Jack Flight Education Ctr.	FEC	1997	5,052	556,000	450,000
Jim Cummings Hall	JCH	1969	96,393	1,826,000	7,229,475
John Bragg Mass Comm. Bldg.	COMM	1990	90,656	14,403,569	8,159,040
Jones Hall	JH	1921	39,290	1,925,720	3,536,100
Judd Hall	JUDD	1963	22,104	253,000	1,688,400
Kappa Alpha House	KAH	1998	10,882	1,097,450	816,150
Kappa Sigma House	KSH	1998	13,859	1,303,780	1,039,425
Keathley University Center	KUC	1967	122,671	2,405,630	10,917,719
Kirksey Old Main	KOM	1911	86,024	1,058,000	7,742,160
Laundry	LA	1979	962	42,106	76,960
Lyon Hall	LH	1927	23,025	430,100	1,726,875
Maint Complex (Bayer-Travis)	BTB	1969	3,377	32,926	270,160
Maint Complex (Hastings)	HAB	1969	8,777	85,576	702,160
Maint Complex (Haynes-Turner)	HTB	1969	11,481	112,028	919,200
Maint Complex (Holmes)	HOB	1969	5,796	87,312	467,120
Maint Complex (Warehouse)	WH	1969	18,419	179,585	1,473,520
Maintenance Complex	MCX	1969	9,870	66,573	789,600
Mary Hall	MARY	1962	17,136	304,200	1,285,200
Mc Farland Health Services	MHS	1969	10,285	288,822	909,360

FACILITY	Building Abbreviation	Year	Gross Sq. Ft. Completed	Initial Cost	Replacement Cost
Mc Henry Hall	MCH	1962	22,848	367,300	1,713,600
Monohan Hall	MOH	1954	48,648	796,600	3,648,600
Murphy Center	MC	1971	235,654	6,599,000	18,852,320
Natatorium	POOL	1953	11,220	119,000	897,600
Ned McWherter LRC	LRC	1975	65,832	1,700,000	5,924,880
Nicks Hall	NICK	1969	35,853	563,850	2,688,975
Observatory	OBSV	1986	376	75,000	40,232
Peck Hall	PH	1968	113,008	1,741,000	10,164,060
Photography Building	PHO	1957	12,142	475,600	1,081,080
Pi Kappa Alpha House	PKAH	1998	9,428	960,072	707,100
Pittard Campus School	PCS	1927	52,424	200,000	4,703,400
President's Home	PRES	1911	7,794	42,000	701,460
Project HELP	PHLP	1996	3,896	409,792	350,640
Reynolds Hall	REH	1960	25,832	428,400	1,937,400
ROTC Annex	ROTX	1942	10,340	45,000	930,600
Rutledge Hall	RH	1911	21,600	253,000	1,620,000
Saunders Fine Arts	SFA	1959	30,920	387,000	3,308,440
Scarlett Commons Apt. Bldg. 1	SCB1	1999	17,190	1,200,000	1,375,200
Scarlett Commons Apt. Bldg. 2	SCB2	1999	17,190	1,200,000	1,375,200
Scarlett Commons Apt. Bldg. 3	SCB3	1999	17,190	1,200,000	1,375,200
Scarlett Commons Apt. Bldg. 4	SCB4	1999	17,190	1,200,000	1,375,200
Scarlett Commons Apt. Bldg. 5	SCB5	1999	11,460	1,200,000	961,280
Scarlett Commons Apt. Bldg. 6	SCB6	1999	17,190	1,200,000	1,375,200
Scarlett Commons Apt. Bldg. 7	SCB7	1999	17,190	1,200,000	1,375,200
Scarlett Commons Apt. Bldg. 8	SCB8	1999	17,190	1,200,000	1,375,200
Scarlett Commons Apt. Bldg. 9	SCB9	1999	17,190	1,200,000	1,375,200
Scarlett Commons Club House	SCCH	1999	8,354	637,160	668,320
Schardt Hall	SCH	1960	25,832	428,400	1,937,400
Sigma Alpha Epsilon House	SAEH	1998	12,382	1,313,261	928,650
Sigma Chi House	SCHH	1998	9,399	986,292	704,925
Sigma Nu House	SNH	1998	11,491	1,239,277	861,825
Sims Hall	SIMS	1959	23,176	261,000	1,738,200
Smith Hall	SMH	1951	37,960	459,500	2,847,000
Soils Lab	SL	1958	300	3,000	27,000
Sports Medicine/Stadium Addition	SMD	2000	2,537	1,000,000	228,870
Stark Agricultural Center	SAG	1968	24,572	536,360	2,211,480
Stephen B. Smith Baseball Clubhse.	SBCH	1997	11,525	300,000	922,000
Storage Building	STO	1971	4,000	21,060	320,000
Storage Warehouse	SW	1978	8,400	45,630	672,000
Strobel Biology Annex	SBA	1974	2,928	150,000	277,665
Student Recreation Facility	REC	1995	147,310	11,750,000	10,000,000
Telecomm Building	TCM	1996	10,092	1,300,000	807,360
Tennessee Livestock Center	TLC	1972	158,191	3,905,369	14,237,190
Tennis Shelter	TNSC	1993	760	30,000	45,200
Todd Building	TODD	1958	107,748	1,681,730	9,912,816
James E. Walker Library	LIB	1998	254,596	25,000,000	23,422,832
Vocational Agricultural	VA	1979	6,000	128,974	480,000
Voorhies Industrial Studies	VIS	1942	37,127	1,384,365	2,970,160
Wiser - Patten Science	WPS	1932	41,448	1,225,000	4,701,473
WMOT Transmitter	WMOT	1959	432	5,200	38,880
Womack Lane Apts. A	WLAA	1966	12,624	161,000	998,400
Womack Lane Apts. B	WLAB	1966	11,168	137,000	873,600
Womack Lane Apts. C	WLAC	1966	12,624	161,000	998,400
Womack Lane Apts. D	WLAD	1968	11,018	148,567	872,000
Womack Lane Apts. E	WLAE	1968	14,230	192,208	1,128,960
Womack Lane Apts. F	WLAF	1968	14,230	192,208	1,128,960
Womack Lane Apts. G	WLAG	1971	14,230	214,860	1,116,160
Womack Lane Apts. H	WLAH	1971	14,230	214,860	1,116,160
Womack Lane Apts. I	WLAI	1971	14,230	214,860	1,116,160
Womack Lane Apts. J	WLAJ	1971	11,794	174,852	908,320
Womack Lane Apts. K	WLAK	1971	11,794	174,852	908,320
Womack Lane Apts. L	WLAL	1971	11,794	174,852	908,320
Wood Hall	WOOD	1964	21,812	320,000	1,635,900
Wright Music Building	WMB	1980	28,593	2,000,000	3,059,451
106, 108 City View Drive	FRIZ	1956	1,231	77,000	
203 City View Drive	HAN2	1943	1,074	92,000	80,550

FACILITY	Building Abbreviation	Year	Gross Sq. Ft. Completed	Initial Cost	Replacement Cost
209, 209A, 209B City View Drive (Frizzel Property)	FRI	1949	2,811	135,000	
204 N. Baird Lane (Wassom House)	WASS	1958	1,025	19,300	82,000
205 N. Baird Lane (Cooper House)	COH	1950	1,250	16,500	112,500
209 N. Baird Lane (Wansley House)	WANH	1958	1,236	12,500	98,880
207 College Heights	HAN5	1943	1,058	63,000	79,350
207 Ragland	BAI	1954	1,468	85,000	110,100
217 College Heights (Allen Property)	ALN	1942	3,768	256,000	301,440
217 Wilson Ave.	STE	1951	2,344	142,000	175,800
219 Eastland Ave.	RAD	1947	1,618	88,000	
721 N. Tennessee Blvd.	KING	1947	2,218	155,000	199,620
820 Fairview	BELL	1962	41,174		
915 Bell St.	WHI	1955	1,040	82,000	93,600
1403 E. Main St.	STM	1951	37,395		2,882,070
1411 E. Main St. (Haynes House)	HH	1958	2,864	35,712	257,760
1412 E. Main St. (Public Safety)	PS	1974	6,256	337,900	563,040
1416 E. Main St. (Harrison House)	HARR	1925	2,073	51,800	165,840
1417 E. Main St. (Black House)	BLH	1958	1,944	27,200	155,520
1417 E. Main Annex / Soil Lab	SL	1958	300		27,000
1421 E. Main St. (Vaughn House)	VH	1958	4,035	50,000	322,800
1425 E. Main St. (Nisbett House)	NISB	1964	3,310	80,000	297,900
2227 E. Main St.	BOW	1943	1,169	80,000	87,675
1511 Elrod St.	BERG	1950	2,454	132,500	184,050
1714 Elrod St.	WMH	1958	1,850	1,110,000	148,000
1804 Jordan Ave.	AND	1973	1,596	8,700	119,700
1809 / 1811 Ragland	VAUG	1957	2,502		
3912 Manson Pike	DAIRY	1969	1,000	35,400	40,000
4570 Lebanon Rd.	SWINE	1958	2,100	48,900	84,000
TOTAL PERM. FACILITIES	142		3,994,298	197,436,815	337,130,280
TEMPORARY FACILITY					
Aerospace Modular	AERO	1993	2,238	56,535	179,040
Art Barn	AB	1907	29,543	150,000	3,161,101
Holmes Building Modular Addition	HBM	1996	2,675	110,000	214,000
Horse Barn	HORS	1958	2,640	1,950	105,600
Student Recreation Storage	RCS	1986	2,400	50,000	192,000
110 A, B, C, D, City View Drive	HAN1	1955	1,971	102,000	147,825
TOTAL TEMPORARY FACILITIES	6		41,467	470,485	3,999,566
NEW FACILITIES/UNDER CONSTRUCTION					
Development House	DEV	2002	6,500	1,275,000	
Honors College	HONO	2003	20,455		1,689,300
Horse Science Center	HSC	2002	N/A	5,677,000	1,850,000
Tennessee Miller Coliseum	TMC	2001	222,409	16,500,000	16,500,000
Tennessee Occupational Safety and Health Administration	TOS	2003	2,310	700,000	700,000
TOTAL FACILITIES	148		4,035,765	197,907,300	341,129,846

Source: MTSU Campus Planning

Centers and Chairs



Centers of Excellence

66

Endowed Chairs

67

Chairs of Excellence

68



Centers of Excellence

The General Assembly and the Governor of Tennessee together announced in 1984 the creation of a new “Centers of Excellence” program for Tennessee public higher education. The centers, to be selected through a state-wide competitive process, would build on the research strengths of the Tennessee Board of Regents universities and the campuses of the University of Tennessee. Their purpose would be to focus the capabilities of public higher education on service to the people of Tennessee by expanding the state’s research base, thereby increasing its national and international stature and its economic competitiveness. MTSU is the site of two Centers of Excellence.

THE CENTER FOR HISTORIC PRESERVATION

established: 1984

Carroll Van West, Ph.D., Director

The **Center for Historic Preservation** was one of the first Centers of Excellence established in Tennessee. The primary emphasis of the Center’s work is to stimulate quality economic development through careful utilization of heritage resources in community development. It is a research and public service institute committed to the identification, conservation, protection, and enhancement of the historic environment. Through its varied projects, programs, and activities, the Center responds directly to the needs and concerns of communities and organizations working to include heritage in their future economic development strategies. The Center provides leadership and assistance on a local, state, regional, and national basis. It is a national clearinghouse for research in a number of areas of the historic preservation field including information resource management, regional planning, heritage education, rural preservation, and heritage tourism. The Center is a past recipient of the Tennessee Higher Education Commission’s distinguished accomplished center status.

THE CENTER FOR POPULAR MUSIC

established: 1985

Paul F. Wells, Director

The **Center for Popular Music** was founded to foster advanced research and scholarship in American popular music and to promote an awareness of, and appreciation for, America’s diverse musical culture. The Center recognizes popular music as a unique form of human expression that has always occupied a significant place in American cultural history, and that must be studied in the context of the variety of artistic, cultural, social, commercial, and technological factors that have shaped the music. The Center maintains one of the country’s largest and most comprehensive music archives, containing more than 120,000 sound recordings, 60,000 pieces of sheet music, and 15,000 books and scores. It serves as a resource for researchers on the regional, national, and international levels. The Center’s outreach activities include the production of numerous conferences, seminars, and concerts, as well as the publication of books, recordings, and public radio documentaries. The Center received the Tennessee Higher Education Commission’s designation as an accomplished center in 1989.





Endowed Chairs

Several academic programs are enriched through the establishment of Chairs dedicated to the support of a particular discipline. The chairholders may be full-time faculty members or individuals from the appropriate business or professional field who hold special seminars or lecture series. Two Chairs, funded by gifts to the University Foundation, are administered through the Economics and Finance Department:

MARTIN CHAIR OF INSURANCE

established: 1982

Kenneth W. Hollman, Ph.D., Chairholder

The **Martin Chair of Insurance** was founded by a group of alumni and friends to upgrade and enhance the insurance curriculum at Middle Tennessee State University. It was named in honor of Thomas T. Martin, a Murfreesboro insurance agent who was a highly successful underwriter for almost 60 years. The Martin Chair of Insurance strives to provide specialized training for insurance students to prepare them for careers in various facets of the insurance industry; to recruit and counsel students and to interest promising students in an insurance career; to develop an insurance curriculum which will prepare students for examinations for agents' and brokers' licenses; to provide general training in insurance for students in other disciplines; to develop and administer cooperative education and intern programs for students who choose the insurance concentration or a minor in the field; and to engage in public service activities such as continuing education and industry-related research programs for members of the insurance community.

THE WEATHERFORD CHAIR OF FINANCE

established: 1986

William F. Ford, Ph.D., Chairholder

The **Weatherford Chair of Finance** was established to honor Jack O. Weatherford, one of Tennessee's and the nation's leading community bankers. A decorated Navy veteran of World War II, Mr. Weatherford completed his education at Middle Tennessee State University and the University of Tennessee-Knoxville. He began his banking career at the Murfreesboro Bank and Trust Company, where he rose through the ranks to chairman and CEO. Holding top positions in national banking organizations, he led his bank through a series of mergers involving acquisitions of smaller area banks during this period. The Chair of Finance provides specialized training for students interested in banking careers. It also operates a placement service for such students, provides scholarships for them, and conducts research and seminars on topics of interest to the banking community.





Several academic programs are enriched through the establishment of Chairs which are dedicated to the support of a particular discipline. There are 43 Chairs of Excellence in the Tennessee Board of Regents Higher Education System. MTSU houses nine Chairs of Excellence, established with a combination of private, University, and state funds. They are:

THE JENNINGS A. JONES CHAIR OF EXCELLENCE IN FREE ENTERPRISE

established: 1986

Aubrey B. Harwell, Jr., Chairholder

est de:



THE KATHERINE DAVIS MURFREE CHAIR IN DYSLEXIC STUDIES

established: 1988

Diane J. Sawyer, Ph.D., Chairholder

The **Chair of Excellence in Dyslexic Studies** was established to inform the public about the condition of dyslexia; establish means by which school personnel (K-12) can be assisted in the identification and treatment of students with dyslexia; and contribute to the fund of knowledge about dyslexia through independent research. To accomplish these goals, conferences and workshops for educators are held annually, research studies have been undertaken, and a Center to provide diagnostic services for children has been established.

NHC CHAIR OF EXCELLENCE IN NURSING

established: 1988

Suzanne Prevost, Ph.D., Chairholder

The **NHC (National HealthCare) Chair of Excellence in Nursing** was established to influence nursing education, practice, research and administration in the State of Tennessee, particularly in the mid-state area. The Chair will assist in the development of the curriculum, faculty, students and resources within the School of Nursing and local health care agencies.

JOHN C. MILLER CHAIR IN EQUINE REPRODUCTIVE PHYSIOLOGY

established: 1994

Chairholder, Vacant

The **John C. Miller Chair in Equine Reproductive Physiology** will provide support through applied research in solving reproductive problems in the horse industry as well as establishing an industry oriented public service program which conducts clinics and seminars to keep the industry current on techniques and technology. The Chair will combine research, teaching, and public service to increase program awareness and acceptance in working with students, industry, and the general public.

MARY E. MILLER CHAIR IN EQUINE HEALTH

established: 1994

Chairholder, Vacant

The **Mary E. Miller Chair in Equine Health** will assist the Reproductive Physiology Chair and network with other veterinarians and schools to bring cutting edge problem solving and teaching to the campus in horse health issues. The Chair will combine research, teaching, and public service to increase program awareness and acceptance in working with students, industry, and the general public.

THE ROBERT E. AND GEORGIANNA WEST RUSSELL CHAIR IN MANUFACTURING EXCELLENCE

established: 1988

Marvin Runyon, Chairholder

The **Robert E. and Georgianna West Russell Chair of Manufacturing Excellence** was founded to enhance the quality of manufacturing education, support the existing manufacturing concerns, and attract new manufacturing activity to the Middle Tennessee region. The Chair works with undergraduate and graduate programs to assist in the matching of students into the workforce by improving curriculum areas and increasing the dialog between industries and education regarding employment needs.



Alumni Relations



Alumni Association - 2002-2003

60

MTSU Alumni Distribution by County

60

MTSU Alumni in Tennessee

61

MTSU Alumni Distribution by State

62

MTSU Alumni in the United States

63



Alumni Association 2002-2003

NATIONAL BOARD OFFICERS

President
Lorraine Singer
Vice President
Tommy Campbell
Ex. Secretary
Debbie Coppinger
Interim Treasurer
Bob Lamb
Past President
John Ellington

MEMBER EMERITUS

David Cullum

NATIONAL BOARD MEMBERS

Fred Allen	John Marshall
Mary Esther Bell	John Milam
Lisa C. Brace	Bud Morris
Dejuan Buford	Eric Newell
Brent Campbell	Sue Patrick
Marshall Campbell	Liz Rhea
Jim Caperton	Matt Rubin
David Clement	Bobby Sands
King Copley	David Singer
Ginger Corley	Ross Spielman
Ann Ellington-Wagner	Ken Summar
Michael Fairbanks	Sandra Trail
Darrell Freeman	Ron Vannatta
George Gardner	Mike Williams
Penny Harrington	Andy Womack
Ben Landers	Bob Womack
J. Devin McClendon	Courtney Yates
Brenda Spencer McKinney	

EX-OFFICIO MEMBERS

President, Faculty Senate
Jennifer L. Dooley
President, MTSU Foundation
Mark Pirtle
President, Student Government Association
Brandon Robbins
President, Blue Raider Athletic Association
Chuck Shaw
MTSU President
Sidney A. McPhee
Vice President for Development and University Relations
William A. Bales
Vice President for Business and Finance
Duane Stucky

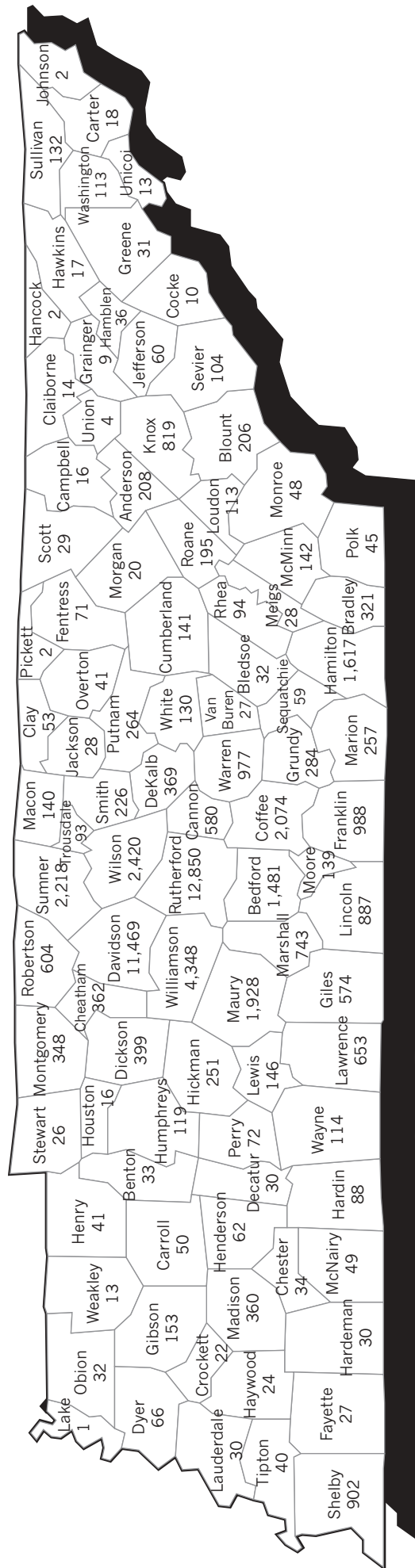
Alumni Distribution by Tennessee County as of August 2002

County	No.	County	No.	County	No.	County	No.
Anderson	208	Fentress	71	Lauderdale	30	Roane	195
Bedford	1,481	Franklin	988	Lawrence	653	Robertson	604
Benton	33	Gibson	153	Lewis	146	Rutherford	12,850
Bledsoe	32	Giles	574	Lincoln	887	Scott	29
Blount	206	Grainger	9	Loudon	113	Sequatchie	59
Bradley	321	Greene	31	Macon	140	Sevier	104
Campbell	16	Grundy	284	Madison	360	Shelby	902
Cannon	580	Hamblen	36	Marion	257	Smith	226
Carroll	50	Hamilton	1,617	Marshall	743	Stewart	26
Carter	18	Hancock	2	Maury	1,928	Sullivan	132
Cheatham	362	Hardeman	30	McMinn	142	Sumner	2,218
Chester	34	Hardin	88	McNairy	49	Tipton	40
Claiborne	14	Hawkins	17	Meigs	28	Trousdale	93
Clay	53	Haywood	24	Monroe	48	Unicoi	13
Cocke	10	Henderson	62	Montgomery	348	Union	4
Coffee	2,074	Henry	41	Moore	139	Van Buren	27
Crockett	22	Hickman	251	Morgan	20	Warren	977
Cumberland	141	Houston	16	Obion	32	Washington	113
Davidson	11,469	Humphreys	119	Overton	41	Wayne	114
Decatur	30	Jackson	28	Perry	72	Weakley	13
DeKalb	369	Jefferson	60	Pickett	2	White	130
Dickson	399	Johnson	2	Polk	45	Williamson	4,348
Dyer	66	Knox	819	Putnam	264	Wilson	2,420
Fayette	27	Lake	1	Rhea	94		
TOTAL							55,556

Source: MTSU Alumni Relations



MTSU Alumni in Tennessee



MTSU Alumni Distribution by State

State	No.	State	No.	State	No.
Alabama	1,477	Louisiana	204	Ohio	455
Alaska	35	Maine	26	Oklahoma	136
Arizona	166	Maryland	249	Oregon	56
Arkansas	191	Massachusetts	102	Pennsylvania	267
California	727	Michigan	254	Rhode Island	11
Colorado	236	Minnesota	98	South Carolina	474
Connecticut	67	Mississippi	293	South Dakota	12
Delaware	30	Missouri	292	Tennessee	55,556
District of Columbia	49	Montana	27	Texas	1,157
Florida	1,843	Nebraska	32	Utah	45
Georgia	2,563	Nevada	65	Vermont	11
Hawaii	25	New Hampshire	32	Virginia	766
Idaho	36	New Jersey	122	Washington	157
Illinois	408	New Mexico	59	West Virginia	77
Indiana	346	New York	327	Wisconsin	92
Iowa	59	North Carolina	837	Wyoming	15
Kansas	104	North Dakota	10	Foreign Countries	1,255
Kentucky	840				
TOTAL					72,773

Source: MTSU Alumni Relations

MITSUBISHI

Life Insurance of the United States



Faculty and Staff Information



Faculty Profile-Fall 2002	52
Full-Time Faculty	53
Faculty Profile by Academic Department-Fall 2002	54
Faculty Salaries	55
Grants and Sponsored Programs	56
Faculty Awards	57
Full-Time University Employees	58

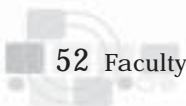


Faculty Profile - Fall 2002

Full-Time Faculty by Age, Rank, and Tenure

College/Unit By Age	Professor	Associate Professor	Assistant Professor	Instructor	Tenured	Non-Tenured on Track	Not Eligible for Tenure	Total
Basic and Applied Sciences								
20-29	0	0	5	2	0	5	2	7
30-39	0	12	20	8	8	20	12	40
40-49	22	24	9	2	43	10	4	57
50-59	30	20	8	0	48	8	2	58
60-69	14	4	1	1	18	1	1	20
70 +	1	1	0	0	1	0	1	2
TOTAL	67	61	43	13	118	44	22	184
Business								
20-29	0	0	1	1	0	1	1	2
30-39	0	2	11	3	2	11	3	16
40-49	7	14	13	4	20	14	4	38
50-59	17	9	6	4	29	3	4	36
60-69	18	2	2	0	21	0	0	21
70 +	0	1	0	0	2	0	0	2
TOTAL	42	28	33	12	74	29	12	115
Educ. and Behavioral Sci.								
20-29	0	0	0	2	0	0	2	2
30-39	0	6	6	5	5	10	2	17
40-49	12	11	12	3	24	11	3	38
50-59	29	16	7	3	44	9	2	55
60-69	18	2	1	0	17	2	0	19
70 +	2	0	1	0	4	1	0	5
TOTAL	61	35	27	13	94	33	9	136
Liberal Arts								
20-29	0	0	3	4	0	2	5	7
30-39	1	8	38	16	9	34	19	62
40-49	16	29	21	5	42	19	11	72
50-59	44	23	10	8	65	10	10	85
60-69	18	7	1	1	25	1	1	27
70+	2	0	0	0	2	0	0	2
TOTAL	81	67	73	34	143	66	46	255
Mass Communication								
20-29	0	0	0	0	0	0	0	0
30-39	0	3	3	4	3	5	2	10
40-49	1	7	5	1	8	5	1	14
50-59	15	6	8	1	21	6	3	30
60-69	3	1	0	0	3	1	0	4
70 +	1	0	0	0	1	0	0	1
TOTAL	20	17	16	6	36	17	6	59
Developmental Studies								
20-29	0	0	1	1	0	2	0	2
30-39	0	0	1	0	0	1	0	1
40-49	1	4	4	1	8	1	1	10
50-59	1	4	4	1	7	0	3	10
60-69	0	0	1	0	1	0	0	1
TOTAL	2	8	11	3	16	4	4	24
Library								
20-29	0	0	1	0	0	1	0	1
30-39	0	0	4	0	1	3	0	4
40-49	0	1	7	0	4	4	0	8
50-59	0	2	7	0	5	3	1	9
60-69	0	0	3	0	3	0	0	3
TOTAL	0	3	22	0	13	11	1	25
UNIVERSITY TOTAL	273	219	225	81	494	204	100	798

Source: MTSU Institutional Research





Full-time Faculty

Tenure and Rank Fall 2002

Tenure Status	Prof.	Assoc.	Asst.	Instr.	Total	Tenure Status	Prof.	Assoc.	Asst.	Instr.	Total
Basic and Applied Sciences						Mass Communication					
Tenure	63	51	4	0	118	Tenure	19	15	2	0	36
Non-Tenured on Track	4	9	31	0	44	Non-Tenured on Track	1	2	11	3	17
Not-Eligible for Tenure	0	1	8	13	22	Not-Eligible for Tenure	0	0	3	3	6
TOTAL	67	61	43	13	184	TOTAL	20	17	16	6	59
Business						Developmental Studies					
Tenure	41	25	8	0	74	Tenure	2	8	6	0	16
Non-Tenured on Track	1	3	25	0	29	Non-Tenured on Track	0	0	3	1	4
Not-Eligible for Tenure	0	0	0	12	12	Not-Eligible for Tenure	0	0	2	2	4
TOTAL	42	28	33	12	115	TOTAL	2	8	11	3	24
Education and Behavioral Science						Library					
Tenure	58	28	8	0	94	Tenure	0	3	10	0	13
Non-Tenured on Track	3	6	19	5	33	Non-Tenured on Track	0	0	11	0	11
Not-Eligible for Tenure	0	1	0	8	9	Not-Eligible for Tenure	0	0	1	0	1
TOTAL	61	35	27	13	136	TOTAL	0	3	22	0	25
Liberal Arts						UNIVERSITY TOTAL					
Tenure	81	56	6	0	143	Prof.	273	219	225	81	798
Non-Tenured on Track	0	9	54	3	66	Asst.					
Not-Eligible for Tenure	0	2	13	31	46	Assoc.					
TOTAL	81	67	73	34	255	Instr.					

Prof. - Professor
 Assoc. - Associate Professor
 Asst. - Assistant Professor
 Instr. - Instructor

Full-Time Faculty by College and Ethnic Origin

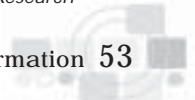
College	Asian		Am. Indian		Black		Hispanic		White		Total		Grand Total
	M	F	M	F	M	F	M	F	M	F	M	F	
Basic and Applied Sciences	7	6	0	0	4	7	1	0	105	54	117	67	184
Business	9	0	2	0	7	4	0	0	62	31	80	35	115
Educ. and Behavioral Sci.	2	0	0	1	3	4	1	1	56	68	62	74	136
Liberal Arts	2	2	0	0	10	9	2	4	130	96	144	111	255
Mass Communication	2	0	0	0	3	2	0	0	40	12	45	14	59
Developmental Studies	0	0	0	0	0	2	0	0	9	13	9	15	24
Library	0	1	0	0	1	1	0	0	6	16	7	18	25
TOTAL	22	9	2	1	28	29	4	5	408	290	464	334	798

Full-Time Faculty by College and Highest Degree

College	Doctorate		Masters		Bachelor		Other *		Total		Grand Total
	M	F	M	F	M	F	M	F	M	F	
Basic and Applied Science	99	44	14	17	1	0	3	6	117	67	184
Business	70	21	6	13	0	0	4	1	80	35	115
Educ. & Behavioral Sci.	56	58	4	16	0	1	1	0	61	75	136
Liberal Arts	103	70	39	40	1	0	1	1	144	111	255
Mass Communication	25	3	16	10	1	1	3	0	45	14	59
Developmental Studies	4	7	3	1	0	1	2	6	9	15	24
Library	1	0	6	16	0	0	0	2	7	18	25
TOTAL	358	203	88	113	3	3	14	16	463	335	798

*other includes J.D. and Ed.S.

Source: MTSU Institutional Research





Faculty Profile - Fall 2002

Academic Department

	Ethnic Origin					Degree			Tenure			Rank				Total
	A	I	B	H	W	D	M	O	T	NT	NE	Prof.	Asso.	Asst.	Inst.	
Basic and Applied Sciences																
Aerospace	0	0	0	0	12	3	7	2	8	3	1	1	8	3	0	12
Agribusiness and Agrisci.	0	0	0	0	8	8	0	0	5	3	0	4	1	3	0	8
Biology	0	0	2	1	37	33	6	1	24	10	6	16	9	10	5	40
Chemistry	2	0	2	0	23	26	1	0	18	7	2	9	13	4	1	27
Computer Science	5	0	0	0	9	13	1	0	10	4	0	7	3	4	0	14
Eng. Tech and Ind. Studies	2	0	1	0	15	14	2	2	13	4	1	8	6	3	1	18
Mathematical Sciences	4	0	2	0	29	27	6	2	23	5	7	12	13	4	6	35
Nursing	0	0	4	0	17	10	8	3	10	6	5	5	6	10	0	21
Physics and Astronomy	0	0	0	0	9	9	0	0	7	2	0	5	2	2	0	9
TOTAL	13	0	11	1	159	143	31	10	118	44	22	67	61	43	13	184
Business																
Accounting	0	2	3	0	20	15	5	5	16	6	3	7	8	7	3	25
BMOM	0	0	1	0	11	9	3	0	9	2	1	3	5	3	1	12
Computer Info. Sys.	3	0	2	0	15	14	6	0	10	6	4	7	2	7	4	20
Economics and Finance	4	0	3	0	20	26	1	0	21	6	0	14	7	6	0	27
Management and Mkt.	2	0	2	0	27	27	4	0	18	9	4	11	6	10	4	31
TOTAL	9	2	11	0	93	91	19	5	74	29	12	42	28	33	12	115
Educ. and Behavioral Sci.																
Criminal Justice Admin.	1	0	0	0	6	6	0	1	5	2	0	2	3	2	0	7
Educational Leadership	0	0	1	0	16	16	1	0	11	6	0	9	3	5	0	17
Elementary and Spec. Edu.	0	0	1	0	18	18	1	0	13	5	1	12	3	3	1	19
HPERS	0	1	2	1	27	21	9	1	15	10	6	12	5	5	9	31
Human Sciences	0	0	1	1	16	10	8	0	13	4	1	6	4	6	2	18
Psychology	1	0	2	0	41	43	1	0	37	6	1	20	17	6	1	44
TOTAL	2	1	7	2	124	114	20	2	94	33	9	61	35	27	13	136
Liberal Arts																
Art	0	0	1	0	18	4	15	0	10	6	3	5	6	8	0	19
English	1	0	2	2	67	49	21	2	33	16	23	19	16	16	21	72
Foreign Langs. and Lits.	1	0	1	3	14	15	4	0	11	6	2	6	1	10	2	19
Geosciences	1	0	0	0	10	9	1	1	9	1	1	5	3	2	1	11
History	1	0	3	0	30	34	0	0	20	11	3	14	10	10	0	34
Music	0	0	3	1	26	13	17	0	14	10	6	9	5	12	4	30
Philosophy	0	0	1	0	7	8	0	0	6	1	1	3	3	2	0	8
Political Science	0	0	1	0	11	11	1	0	9	2	1	5	4	3	0	12
Social Work	0	0	3	0	6	5	4	0	6	3	0	2	5	1	1	9
Sociology/Anthropology	0	0	1	0	16	12	5	0	11	4	2	6	5	4	2	17
Speech and Theatre	0	0	3	0	21	13	11	0	14	6	4	7	9	5	3	24
TOTAL	4	0	19	6	226	173	79	3	143	66	46	81	67	73	34	255
Mass Communication																
Electronic Media Comm.	1	0	1	0	13	8	7	0	10	5	0	6	3	5	1	15
Journalism	1	0	2	0	18	13	6	2	12	4	5	9	4	4	4	21
Recording Industry	0	0	2	0	21	7	13	3	14	8	1	5	10	7	1	23
TOTAL	2	0	5	0	52	28	26	5	36	17	6	20	17	16	6	59
Developmental Studies																
Library	0	0	2	0	22	11	4	9	16	4	4	2	8	11	3	24
	1	0	2	0	22	1	22	2	13	11	1	0	3	22	0	25
TOTAL	31	3	57	9	698	561	201	36	494	204	100	273	219	225	81	798

Ethnic Origin

A - Asian
I - American Indian
B - Black
H - Hispanic
W - White

Degree

D - Doctorate
M - Masters
O - Other degrees
includes J.D., Ed.S.

Tenure

T - Tenured
NT - Non-Tenured on Track
NE - Not Eligible for Tenure

Rank

Prof. - Professor
Assoc. - Associate Professor
Asst. - Assistant Professor
Inst. - Instructor

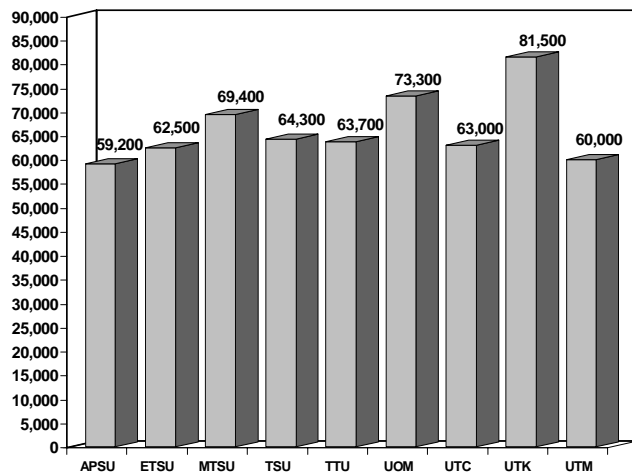
Source: MTSU Institutional Research

Faculty Salaries

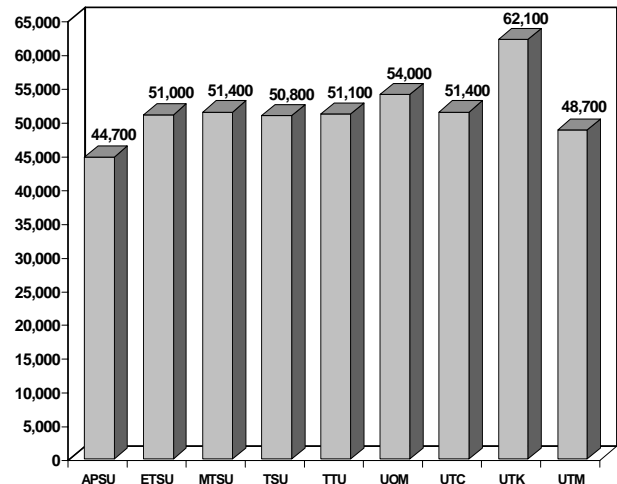
Average Faculty Salaries for Academic Years 2000-2001 and 2001-2002

Institution	Professor			Associate Professor			Assistant Professor			Instructor		
	00-01	01-02	% Chg	00-01	01-02	% Chg	00-01	01-02	% Chg	00-01	01-02	% Chg
Tenn. Board of Regents												
Austin Peay	58,600	59,200	1.0%	43,500	44,700	2.8%	38,000	38,200	0.5%	30,100	27,700	-8.0%
East Tennessee	61,200	62,500	2.1%	49,600	51,000	2.8%	41,800	43,400	3.8%	32,500	34,400	5.8%
Middle Tennessee	64,800	69,400	7.1%	48,300	51,400	6.4%	42,500	44,200	4.0%	29,600	30,800	4.1%
Tennessee State	65,410	64,300	-1.7%	51,118	50,800	-0.6%	42,870	42,500	-0.9%	36,293	37,600	3.6%
Tennessee Tech	62,900	63,700	1.3%	49,100	51,100	4.1%	41,300	43,200	4.6%	30,700	32,900	7.2%
University of Memphis	71,400	73,300	2.7%	52,500	54,000	2.9%	45,100	46,600	3.3%	31,300	32,100	2.6%
University of Tennessee												
UT - Chattanooga	61,300	63,000	2.8%	48,900	51,400	5.1%	43,500	45,400	4.4%	31,800	32,200	1.3%
UT - Knoxville	79,600	81,500	2.4%	60,100	62,100	3.3%	47,300	50,100	5.9%	34,200	34,200	0.0%
UT - Martin	58,000	60,000	3.4%	46,700	48,700	4.3%	41,600	43,800	5.3%	35,800	36,400	1.7%

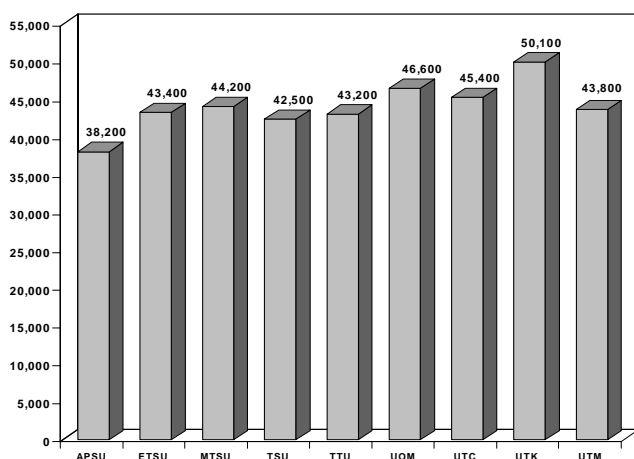
PROFESSOR



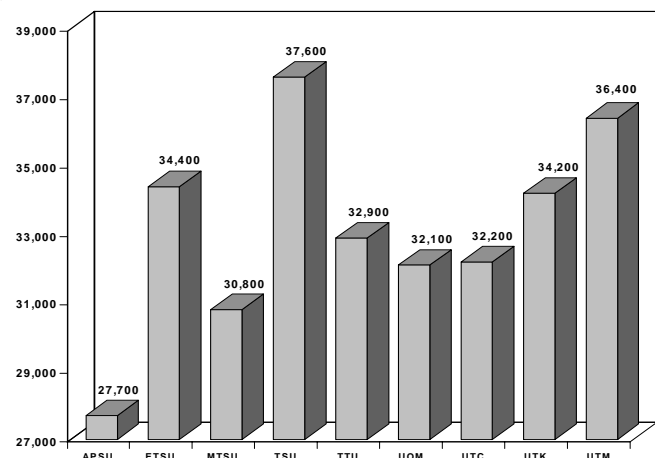
ASSOCIATE PROFESSOR



ASSISTANT PROFESSOR



INSTRUCTOR



Source: The Chronicle of Higher Education, April 19, 2002



Grants and Sponsored Programs

The Office of Sponsored Programs was established in 1992 to provide assistance to the campus in developing proposals for external funding support of programs. Its mission is to provide services to faculty and staff, which support their efforts to obtain external funding for various programs.

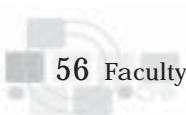
During 2001-02 the University received 78 grants totaling \$6.7 million. Since 1993, the Office of Sponsored Programs has acquired \$42 million in external funding.

Among the \$900,000 in federal grants, the University received \$64,000 from the National Science Foundation, \$175,000 from the National Aeronautics and Space Administration, and \$430,000 from the Department of Education. State awards rose to \$4.8 million with the Tennessee Department of Education remaining the major funding source for state agencies. MTSU has partnerships with Vanderbilt University, Western Kentucky University, Meharry Medical College, and Rutherford County. These partnerships resulted in \$200,000 in grant funds.

External Grants Funding by Agency

Source	1999-2000		2000-2001		2001-2002	
	Amount	No. Awarded	Amount	No. Awarded	Amount	No. Awarded
Federal	1,077,301	16	1,367,145	12	909,918	10
State	3,445,821	37	3,784,776	40	4,816,304	42
Local	103,084	6	79,157	5	317,740	4
Private/Other	797,328	29	1,008,177	28	626,166	22
TOTAL	5,423,534	88	6,239,255	85	6,670,128	78

Source: MTSU Office of Sponsored Programs





Faculty Awards 2001-2002

Distinguished Research Award

The Distinguished Research Award recognizes scholarly activity which generates new knowledge, product, or application. This includes empirical studies, analytical literature searches which result in substantial modification of existing explanations of events, and/or creation of scholarly works of expression or appreciation.

Dr. Stephen R. Schmidt, Psychology
Dr. Gary P. Wulfsberg, Chemistry
Dr. Emily N. Zietz, Economics and Finance

Outstanding Public Service Award

The Public Service Committee has defined public service as the term used to encompass activities which utilize the professional expertise of University faculty in providing service to the community, state, region, or nation, within the bounds of the University mission as executed by its departments.

Dr. Timothy R. Graeff, Management and Marketing
Ms. Deborah D. Roberts, Business and Finance
Dr. Catherine D. Stogner, Human Sciences
Dr. Paula B. Thomas, Accounting

Outstanding Creative Activity Award

The Outstanding Creative Activity Award recognizes faculty contributions in such areas as dance, theater, musical composition, or performance, and the visual arts (including painting and sculpture), as well as in any other field or artistic endeavor. For the purpose of this award, creative achievement is defined as original, imaginative works of artistic merit as distinguished from empirical/analytical works of scholarly research.

Mr. John P. J. Hill, Recording Industry

Outstanding Achievement in Instructional Technology Award

The Outstanding Achievement in Instructional Technology Award was proposed by MTSU's Teaching, Learning, and Technology Roundtable and approved by the MTSU Foundation during spring 1996. This is an annual award that recognizes faculty who do excellent work in their fields with the use of technology.

Dr. Mary C. Enderson, Mathematical Sciences
Dr. Jacqueline A. Gilbert, Management and Marketing
Dr. Patricia A. O'Leary, Nursing

Outstanding Teaching Award

The MTSU Foundation has funded Outstanding Teacher Awards for the past 30 years.

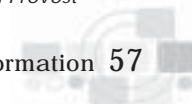
Dr. Margaret A. Fontanesi-Seime, Social Work
Ms. Mary Jane Lavender, Nursing
Dr. Patricia M. Patterson, Chemistry
Dr. Robert C. Petersen, English
Dr. Kathleen M. Therrien, English

Faculty Career Achievement Award

The Career Achievement Award was created to recognize accomplishments in the areas of teaching, educational innovation, publications and research/creative activity, public service, university service, and service to the profession. The MTSU Foundation created this award in 2000.

Dr. Marion R. Wells, Biology

Source: MTSU Executive Vice President and Provost





Full-time University Employees

Fall Terms 2001 and 2002

	Fall 2001				Fall 2002				Total			
	Male		Female		Male		Female		2001		2002	
	No.	Percent	No.	Percent	No.	Percent	No.	Percent	No.	Percent	No.	Percent
Exec./Admin./Mgr.												
White	31	47.0%	24	36.4%	32	47.8%	25	37.3%	55	83.3%	57	85.1%
Black	4	6.1%	7	10.6%	4	6.0%	5	7.5%	11	16.7%	9	13.4%
Hispanic	0	0.0%	0	0.0%	0	0.0%	0	0.0%	0	0.0%	0	0.0%
Asian	0	0.0%	0	0.0%	1	1.5%	0	0.0%	0	0.0%	1	1.5%
American Indian	0	0.0%	0	0.0%	0	0.0%	0	0.0%	0	0.0%	0	0.0%
TOTAL	35	53.0%	31	47.0%	37	55.2%	30	44.8%	66	100.0%	67	100.0%
Faculty												
White	387	50.7%	269	35.3%	408	51.1%	290	36.3%	656	86.0%	698	87.5%
Black	32	4.2%	31	4.1%	28	3.5%	29	3.6%	63	8.3%	57	7.1%
Hispanic	5	0.7%	7	0.9%	4	0.5%	5	0.6%	12	1.6%	9	1.1%
Asian	22	2.9%	7	0.9%	22	2.8%	9	1.1%	29	3.8%	31	3.9%
American Indian	2	0.3%	1	0.1%	2	0.3%	1	0.1%	3	0.4%	3	0.4%
TOTAL	448	58.7%	315	41.3%	464	58.1%	334	41.9%	763	100.0%	798	100.0%
Prof./Non-Faculty												
White	134	38.3%	169	48.3%	147	40.2%	168	45.9%	303	86.6%	315	86.1%
Black	21	6.0%	19	5.4%	22	6.0%	20	5.5%	40	11.4%	42	11.5%
Hispanic	3	0.9%	1	0.3%	4	1.1%	2	0.5%	4	1.1%	6	1.6%
Asian	1	0.3%	2	0.6%	1	0.3%	2	0.5%	3	0.9%	3	0.8%
American Indian	0	0.0%	0	0.0%	0	0.0%	0	0.0%	0	0.0%	0	0.0%
TOTAL	159	45.4%	191	54.6%	174	47.5%	192	52.5%	350	100.0%	366	100.0%
Clerical/Secretarial												
White	15	4.2%	307	86.5%	14	3.9%	312	86.7%	322	90.7%	326	90.6%
Black	3	0.8%	27	7.6%	2	0.6%	30	8.3%	30	8.5%	32	8.9%
Hispanic	0	0.0%	1	0.3%	0	0.0%	2	0.6%	1	0.3%	2	0.6%
Asian	0	0.0%	1	0.3%	0	0.0%	0	0.0%	1	0.3%	0	0.0%
American Indian	0	0.0%	1	0.3%	0	0.0%	0	0.0%	1	0.3%	0	0.0%
TOTAL	18	5.1%	337	94.9%	16	4.4%	344	95.6%	355	100.0%	360	100.0%
Tech./Paraprofessional												
White	18	72.0%	5	20.0%	20	71.4%	6	21.4%	23	92.0%	26	92.9%
Black	1	4.0%	0	0.0%	1	3.6%	0	0.0%	1	4.0%	1	3.6%
Hispanic	0	0.0%	0	0.0%	0	0.0%	0	0.0%	0	0.0%	0	0.0%
Asian	0	0.0%	0	0.0%	0	0.0%	0	0.0%	0	0.0%	0	0.0%
American Indian	1	4.0%	0	0.0%	1	3.6%	0	0.0%	1	4.0%	1	3.6%
TOTAL	20	80.0%	5	20.0%	22	78.6%	6	21.4%	25	100.0%	28	100.0%
Skilled Craft												
White	43	78.2%	6	10.9%	43	79.6%	5	9.3%	49	89.1%	48	88.9%
Black	6	10.9%	0	0.0%	6	11.1%	0	0.0%	6	10.9%	6	11.1%
Hispanic	0	0.0%	0	0.0%	0	0.0%	0	0.0%	0	0.0%	0	0.0%
Asian	0	0.0%	0	0.0%	0	0.0%	0	0.0%	0	0.0%	0	0.0%
American Indian	0	0.0%	0	0.0%	0	0.0%	0	0.0%	0	0.0%	0	0.0%
TOTAL	49	89.1%	6	10.9%	49	90.7%	5	9.3%	55	100.0%	54	100.0%
Service/Maintenance												
White	66	37.7%	29	16.6%	59	36.4%	30	18.5%	95	54.3%	89	54.9%
Black	37	21.1%	40	22.9%	35	21.6%	35	21.6%	77	44.0%	70	43.2%
Hispanic	0	0.0%	1	0.6%	0	0.0%	1	0.6%	1	0.6%	1	0.6%
Asian	0	0.0%	0	0.0%	0	0.0%	1	0.6%	0	0.0%	1	0.6%
American Indian	1	0.6%	1	0.6%	1	0.6%	0	0.0%	2	1.1%	1	0.6%
TOTAL	104	59.4%	71	40.6%	95	58.6%	67	41.4%	175	100.0%	162	100.0%
TOTAL ALL EMPLOYEES	833	46.6%	956	53.4%	857	46.7%	978	53.3%	1,789	100.00%	1,835	100.00%

Source: MTSU Institutional Research



Student-Related Information



Division of Student Affairs	42
International Programs and Services	44
Career and Employment Center	45
Housing and Residential Life	46
Student Financial Assistance Summary	47
Athletics	48
Public Safety	49



Division of Student Affairs and Enrollment Management

In recognition of the belief that an individual student's personal development takes place as a result of activities which occur outside the context of a formal classroom setting, the Division of Student Affairs and Enrollment Management designs and implements programs and services that complement the academic mission in the preparation of students as educated and productive members of society.

GOALS OF THE DIVISION INCLUDE:

- ◆ providing opportunities for students to explore, individually and collectively, their strengths and differences and for stimulating responsible social, intellectual, physical, and emotional growth;
- ◆ encouraging and facilitating active involvement in the University community by providing education and information about campus programs, services, policies, and procedures;
- ◆ serving as an advocate for student concerns to the administration, faculty, staff, and other members of the University community;
- ◆ encouraging an environment responsive to individual differences and representative of the diversity of MTSU's population; and
- ◆ assisting students matriculate to the University, including assistance with admissions, records, financial aid, and advisement.

The division comprises three major units, each composed of departments directly related to the unit mission, and each standing separately, but working together to realize the overall goals and purposes of the Division. These units are Student Life, Academic Support Services, and Enrollment Management. The various departments and services are assigned according to the specific role they play in realizing the Division's objectives.

STUDENT LIFE

The Student Life unit encompasses those activities which provide students the opportunity for involvement and expression, service to the community, and leadership development. Student Life departments include:

Adult Services Center	Student Health Services
Campus Recreation	Student Judicial and Mediation Programs
Cheerleaders	Student Newspaper
Greek Life	Student Organizations
June Anderson Women's Center	Student Programming
Multicultural Affairs	Student Publications
Student Government Association	Student Union

The associate vice president and dean of Student Life is located in KUC 212 and can be reached at (615) 898-2440.



ACADEMIC SUPPORT SERVICES

The Academic Support Services unit of the Division of Student Affairs and Enrollment Management provides students opportunities to connect their academic experience to their life outside of the classroom. Academic support services include:

Academic Advising of Undeclared Students	Guidance Services
America Reads	Housing and Residential Life
Campus Day Care	Living/Learning Communities
Career and Employment Center	New Student Orientation (CUSTOMS)
Community Service	Service Learning
Cooperative Education	Student Athlete Enhancement Center
Disabled Student Services	Student Development
Distinguished Lecture Series	Student Leadership Programs

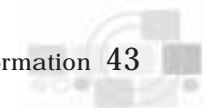
The associate vice president for Academic Support Services is located in KUC 306 and can be reached at (615) 898-5342.

ENROLLMENT MANAGEMENT

The Enrollment Management unit of the Division assists students in becoming a part of the University community. Enrollment Management departments include:

Admissions	Records
Financial Aid	Scheduling Center
International Programs and Services	Withdrawals and Retention Programs

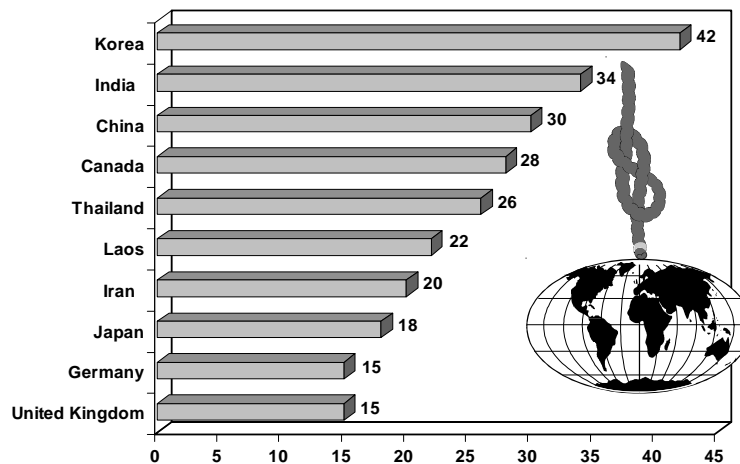
The assistant vice provost for Enrollment Management is located in Cope 207 and can be reached at (615) 898-2828.



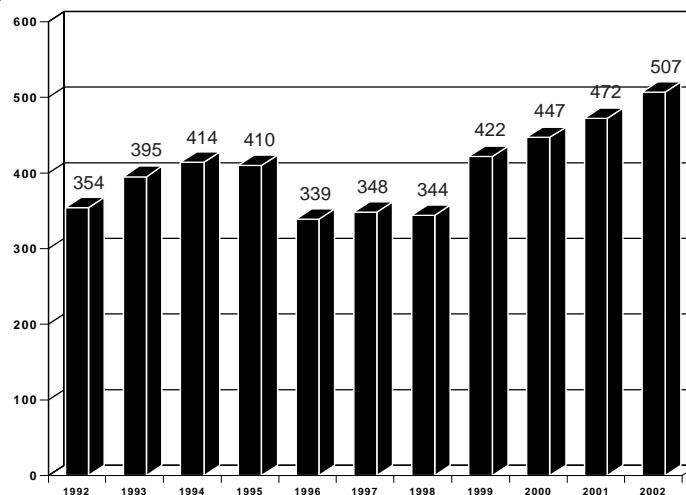
International Programs and Services

The mission of the International Programs and Services Office (IPSO) is to foster international awareness, understanding, and competence among students and faculty at Middle Tennessee State University and within the middle Tennessee region by providing programs and services which promote and facilitate international educational activities and opportunities. IPSO's mission is in keeping with the university's overall mission to attract students regionally, nationally, and internationally and provide quality educational programs in a supportive campus environment. IPSO contributes to the cultural diversity of the campus community by attracting international students from over 90 countries. The office assists students in areas of immigration regulations, academic advisement and admissions, cultural adjustment, and community interaction. IPSO also provides support services for American students and faculty through the development and coordination of study abroad and exchange programs. In addition, the unit houses reference materials on study abroad programs available through the university and through external institutions and agencies. The unit is a resource for area organizations and businesses needing assistance with cross-cultural issues related to their trade or investment activities with foreign companies. Finally, IPSO is the university's primary advocate for international education at the local, state, and federal levels.

TOP 10 COUNTRIES 2002



HISTORICAL TREND - FALL 1992-2002



Source: MTSU International Programs and Services



Career and Employment Center

The Career and Employment Center assists prospective graduates and alumni in preparing for the job search and securing career positions. The Center also assists students in obtaining part-time and summer employment.

The Career and Employment Center opened its first satellite office during the summer of 2001. A coordinator was employed and a second satellite office was opened during the fall of 2002. Plans include employing coordinators for each of the colleges in the near future.

The Career Center transitioned from CareerConnections, a Web-based student registration system, to eRecruiting in July 2002. The Career Center continues to develop new features on its Web site to enhance the delivery of services to students, alumni, and employers.

Employers are invited to participate in the Career Fairs and the campus recruiting program. To schedule recruiting visits, employers should contact the Career and Employment Center at (615) 898-2500 or e-mail career@mtsu.edu.

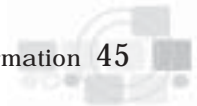
EMPLOYERS RECRUITING ON CAMPUS

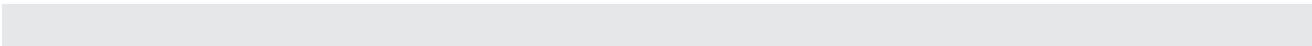
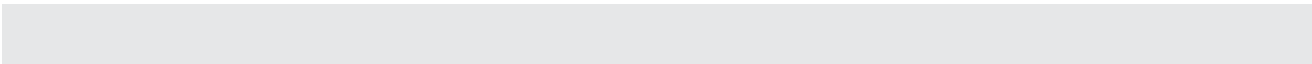
	1999-00	2000-01	2001-02
Business and Government	113	80	85
Education and Graduate Schools	65	24	14
Nurses/Health Career Day	31	41	41
Summer Jobs/Internship Fair	45	55	46
Career Day	151	165	120

The Career and Employment Center sponsors and participates in the following career fairs:

- ◆ The **Annual Career Day** is held each September for all students and graduates. Employers from business, government agencies, and services organizations and representatives of graduate and professional schools provide career information and accept resumes during this event.
- ◆ The **Nurses/Health Career Day** is held each November for students in nursing and health-related career fields.
- ◆ The **Summer Jobs/Internship Fair** is held each January for students seeking summer employment opportunities and internships.
- ◆ The **Nashville Area Teacher Recruitment Fair** and the **Nashville Area College to Career Fair** are sponsored by a consortium of area universities and are held each spring for prospective graduates.

Source: MTSU Career and Employment Center





Source: MTSU Housing and Residential Life Office



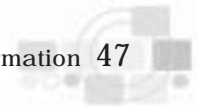


Student Financial Assistance Summary

Academic Year 2001-2002

	No. Awards	Amount
Employment Programs		
Federal College Work Study Program	452	\$986,369
Institutional Student Work	1,410	\$4,452,597
Grant Programs (PELL, SEOG, TSAC)		
Federal and state grant programs for undergraduate students	9,809	\$14,152,107
Loan Programs		
Federally funded loans for students	14,120	\$44,524,907
State Funded Academic Scholarships		
Scholarships for academically talented students, disadvantaged students, desegregation populations	3,134	\$4,570,182
Externally Funded Scholarships		
Awarded by private sources to individual students	1,717	\$1,763,142
Athletic Scholarships		
Supporting student athletes in men's and women's intercollegiate sports	230	\$2,726,066
No. of Students Received Financial Aid	13,592	(Unduplicated No. of Students)
TOTAL Amount of Financial Aid	\$73,265,370	

Source: MTSU Student Financial Aid Office





Athletics

The Middle Tennessee athletic program, which spent 47 years in the Ohio Valley Conference before changing leagues in 2000, is in its second year as a member of the Sun Belt Conference (SBC). The Sun Belt, rated one of the top conferences in the country in baseball, and men's and women's basketball, will crown its first football champion in 2001. The SBC home is based in New Orleans, Louisiana, and the Blue Raiders will play against teams such as Arkansas-Little Rock, Arkansas State, Denver, Florida International, Louisiana-Lafayette, Louisiana Tech, New Mexico State, New Orleans, North Texas, South Alabama and Western Kentucky. The football playing members are Arkansas State, Idaho, Louisiana-Lafayette, Louisiana-Monroe, Middle Tennessee, New Mexico State, and North Texas.

In just the second year as a member of the Sun Belt Conference, Middle Tennessee continues to make a name as the Blue Raiders were co-champions in football and Sun Belt Champions in men's and women's indoor track and field.

Colors:	Royal Blue, White, and Silver
Mascot Colors/Nickname:	Lightning/Blue Raiders
Slogan:	"Go Blue!"
Affiliation:	NCAA Division I-A for all sports
Conference:	Sun Belt
Honors:	Sun Belt Conference All-Sports Champions - 2000-01 OVC Academic Achievement Banner, 1995-96 OVC All-Sports Champions (Men), 1995-96, 1996-97, 1997-98, 1998-99, 1999-2000

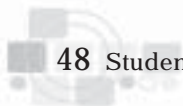
RECENT ACCOMPLISHMENTS

Baseball	Sun Belt Champions 2001 OVC Champions 1990, 1991, 1992, 1993, 1995, 1996, 1997 1990, 1991, 1995, 2000, 2001 1990, 1991, 1992, 1994, 1995, 2000
NCAA Tournament Appearances	
OVC Tournament Champions	
Men's Basketball	OVC Champions 1989
OVC Tournament champions	1989
NCAA Tournament Appearances	1989
Men's Cross Country	OVC Champions 1983
Football	OVC Champions 1990, 1992 1984, 1990, 1991, 1992, 1994
NCAA Division I-AA Playoffs	
Men's Golf	OVC Champions 1994, 1995, 1996, 1997, 2000
NCAA Tournament Appearances	2000
Men's Indoor Track	Sun Belt Champions 2001, 2002 OVC Champions 1991, 1993, 2000
Men's Outdoor Track	Sun Belt Champions 2001 OVC Champions 1993, 1994 OVC Champions 1991, 1992, 1993, 1994, 1995, 1996, 1997, 1998, 2000 1995, 1996, 1997, 1998, 2000, 2001
Men's Tennis	
NCAA Tournament	
Women's Basketball	OVC Champions 1995, 1996, 1999 1988, 1998
OVC Tournament Champions	
NCAA Tournament Appearances	1996, 1998
WNIT Appearances	1999, 2001
Women's Indoor Track	OVC Champions 1991, 1994, 1995, 1996
Women's Outdoor Track	Sun Belt Champions 2001, 2002 OVC Champions 1991, 1994, 1996 OVC Champions 1990, 1991, 1992, 1993, 1996, 1997, 1998, 2000 2000
Women's Tennis	
NCAA Tournament Appearances	
Women's Volleyball	
NCAA Tournament Appearance	1995
Women's Softball	OVC Tournaments Champions 2000
NCAA Tournament Appearances	2000

ATHLETIC TEAMS AND HEAD COACHES

Baseball - Steve Peterson	Soccer (Women) - Aston Rhoden
Basketball (Men) - Kermit Davis	Softball (Women) - Cindy Connelley
Basketball (Women) - Stephany Smith	Tennis (Men) - Dale Short
Cross Country (Men and Women) - Dean Hayes	Tennis (Women) - Randy Holden
Football - Andy McCollum	Track (Men and Women) - Dean Hayes
Golf (Men) - Johnny Moore	Volleyball (Women) - Lisa Kisse
Golf (Women) - Rachel Moore	

Source: MTSU Office of Sports Information



Public Safety

The mission of the Department of Public Safety is to provide for the overall safety and security of the University community and properties. The mission encompasses the protection of all persons, property, and the maintenance of an orderly environment. The department is a support function created to facilitate the general educational mission of the University.

The goal of the department is to maintain an orderly environment which is conducive to a positive learning experience. The department will actively pursue methods to foster community involvement in providing the most professional services possible to the University and our surrounding community. The department will form a partnership with our community to actively seek solutions to their concerns in order to provide for the highest quality of life.

MTSU became the eighth university nationally and the first in Tennessee to be accredited by the highly respected, internationally recognized Commission on Accreditation for Law Enforcement Agencies, Inc.



The MTSU Department of Public Safety agency operates 24 hours per day and can be reached at (615) 898-2424.

MTSU Crime on Campus 1999-2001

Offense Category	1999			2000			2001		
	Offenses		%	Offenses		%	Offenses		%
	Reported	Cleared	Cleared	Reported	Cleared	Cleared	Reported	Cleared	Cleared
Homicide/Manslaughter	0	0	0%	0	0	0%	0	0	0%
Sex Offenses									
Forcible Rape	2	0	0%	2	0	0%	1	1	100%
Forcible Fondling							1	1	100%
Prostitution	0	0	0%	0	0	0%	0	0	0%
Assault-Total	71	10	12%	94	25	27%	95	19	20%
Aggravated				12	7	58%	9	2	22%
Simple				32	13	41%	32	11	34%
Intimidation				45	4	9%	52	5	10%
Other				5	1	20%	2	1	50%
Burglary	15	2	13%	43	2	5%	55	4	7%
Robbery	1	0	0%	3	3	100%	2	0	0%
Larceny	174	4	2%	174	9	5%	184	18	10%
Motor Vehicle Theft	7	0	0%	5	0	0%	8	1	13%
Arson	5	0	0%	3	1	33%	1	0	0%
Forgery	2	0	0%	3	0	0%	1	0	0%
Hate Crime	0	0	0%	0	0	0%	0	0	0%
Fraud	2	1	50%	8	6	75%	10	6	60%
Embezzlement	0	0	0%	1	0	0%	0	0	0%
Stolen Property	1	0	0%	2	0	0%	0	0	0%
Vandalism	64	1	2%	112	10	9%	67	5	7%
Weapons	1	0	0%	2	2	100%	1	1	100%
Drugs (Narcotic Violations)	12	3	25%	23	14	61%	33	33	100%
Drugs (Equipment Violation)	7	0	0%	10	5	50%	13	12	92%
Gambling	0	0	0%	0	0	0%	0	0	0%
Family Offenses	1	1	100%	0	0	0%	0	0	0%
DUI	21	21	100%	26	26	100%	61	61	100%
Liquor Laws	1	1	100%	2	2	100%	2	2	100%
Drunkennes	10	10	100%	20	19	95%	44	44	100%
Disorderly Conduct	2	2	100%	6	1	17%	1	1	100%
Vagrancy	5	5	100%	26	11	42%	4	4	100%
All Other Offenses	17	17	100%	94	11	12%	1	1	100%
TOTAL	421	78	19%	659	147	22%	585	214	36%

Source: MTSU Public Safety